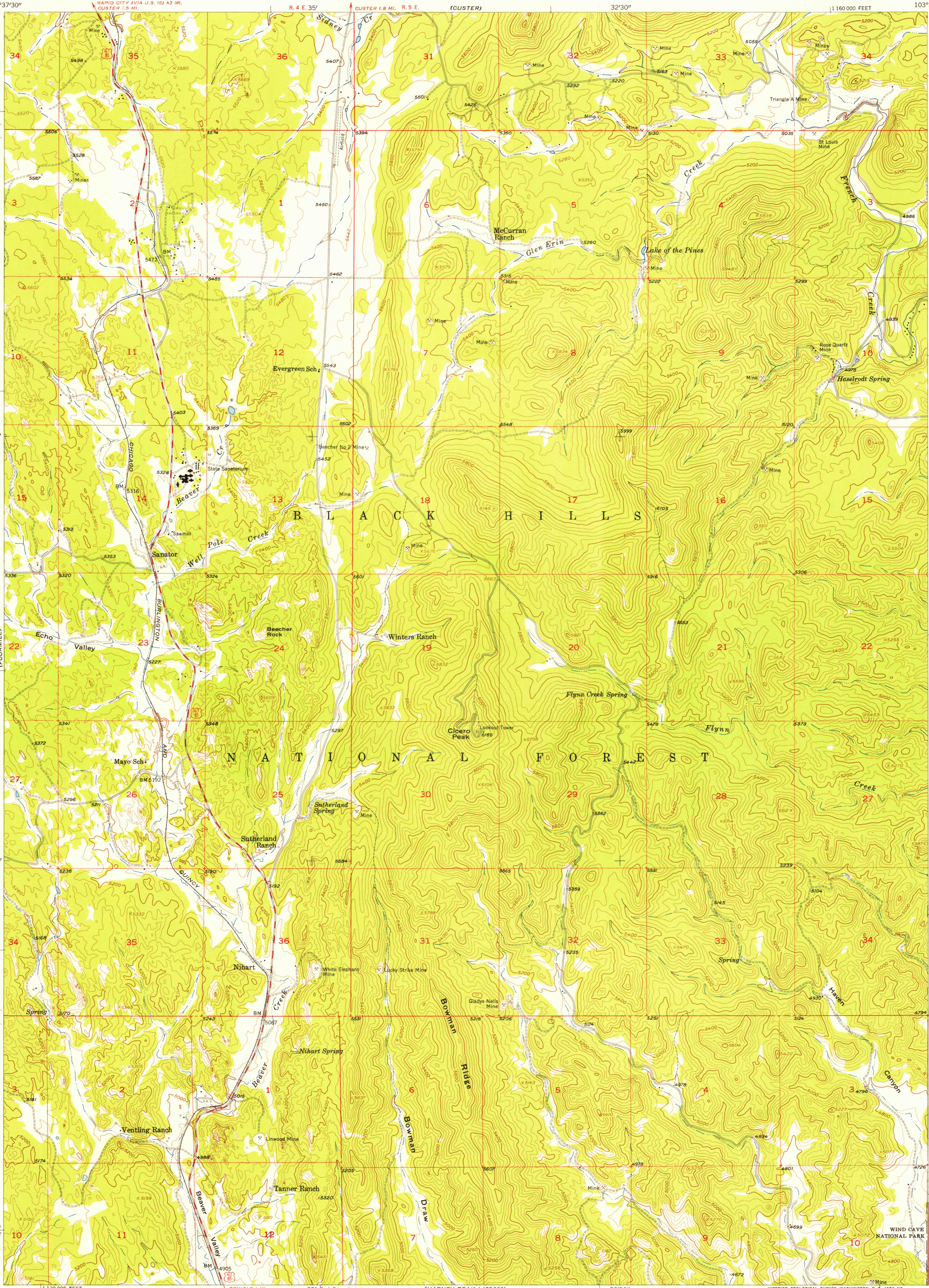
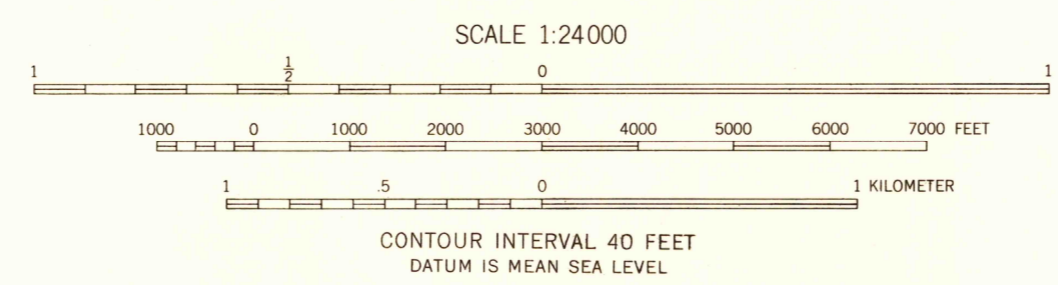
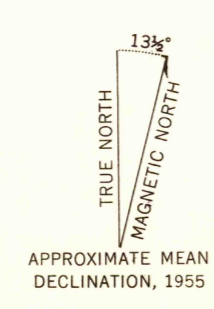


103°37'30"  
43°45'  
T. 3 S.  
T. 4 S.  
42°30'  
40'  
T. 4 S.  
T. 5 S.  
490 000 FEET  
43°37'30"  
103°37'30"

103°30'  
43°45'  
T. 3 S.  
T. 4 S.  
42°30'  
40'  
T. 4 S.  
T. 5 S.  
490 000 FEET  
103°30'



Mapped, edited, and published by the Geological Survey  
Control by USGS and USC&GS  
Topography from aerial photographs by multiplex methods  
Aerial photographs taken 1953. Field check 1955  
Polyconic projection. 1927 North American datum  
10,000-foot grid based on South Dakota coordinate system,  
south zone  
Unchecked elevations are shown in brown



USGS  
HISTORICAL FILE  
TOPOGRAPHIC DIVISION  
SOUTH DAKOTA  
QUADRANGLE LOCATION

ROAD CLASSIFICATION	
Heavy-duty	Light-duty
Medium-duty	Unimproved dirt
U. S. Route	State Route

CICERO PEAK, S. DAK.  
N 4337.5—W 10330/7.5

THIS MAP COMPLIES WITH NATIONAL MAP ACCURACY STANDARDS  
FOR SALE BY U. S. GEOLOGICAL SURVEY, FEDERAL CENTER, DENVER, COLORADO OR WASHINGTON 25, D. C.  
A FOLDER DESCRIBING TOPOGRAPHIC MAPS AND SYMBOLS IS AVAILABLE ON REQUEST

1955

DEC 5 1956

U.S.G.S.  
FILE COPY  
TOPOGRAPHIC DIVISION

U.S.G.S.  
FILE COPY  
TOPOGRAPHIC DIVISION