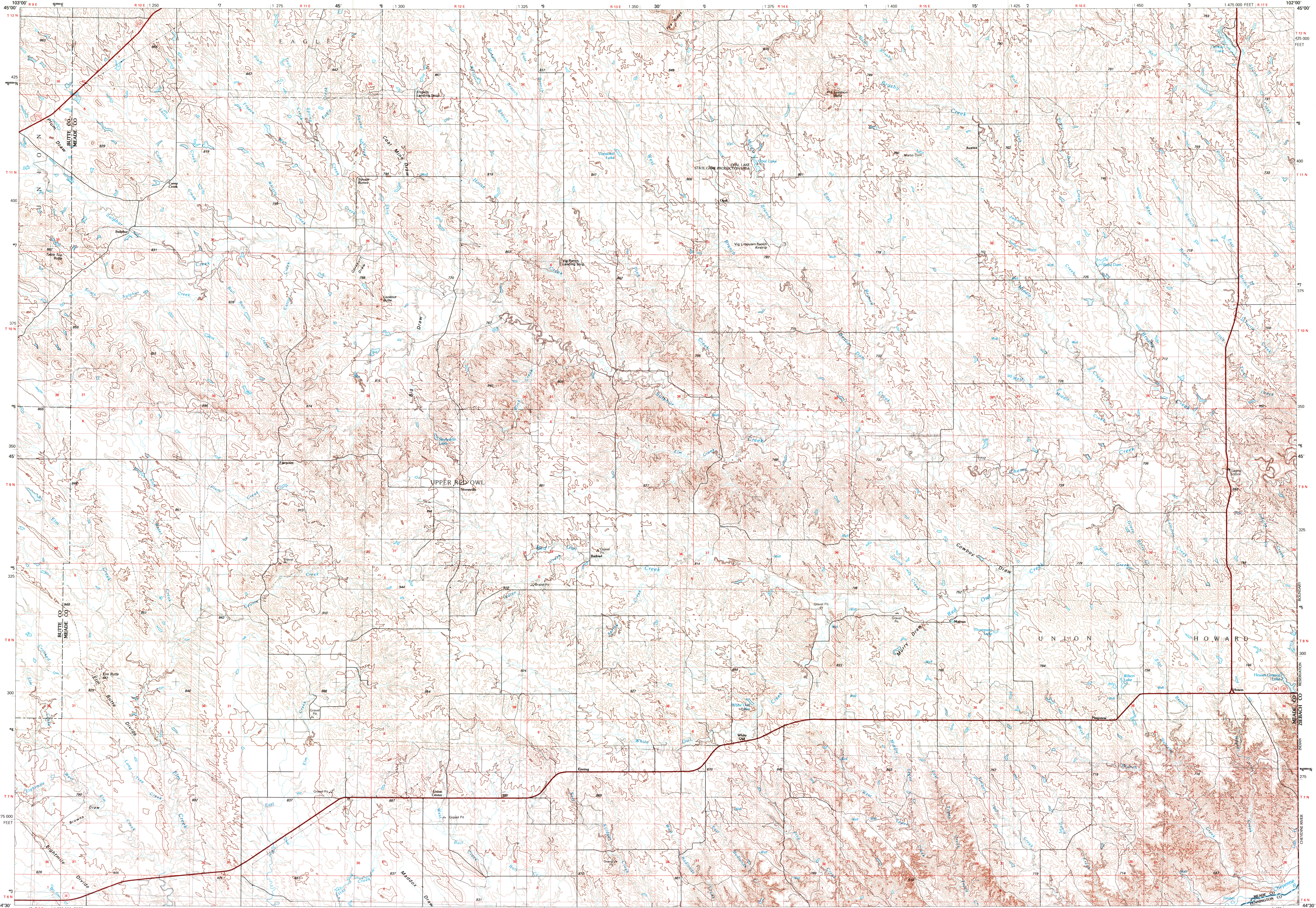


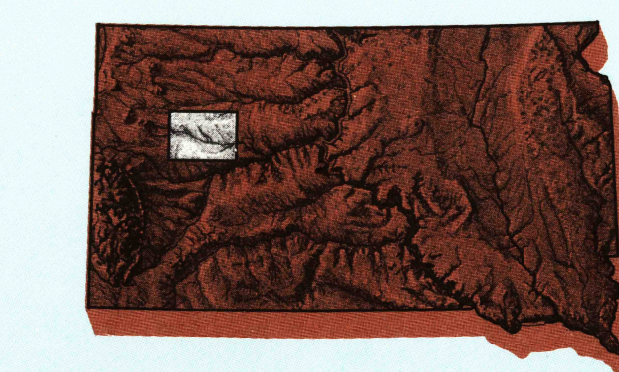
CAMP CREEK, SOUTH DAKOTA

30 X 60 MINUTE SERIES (TOPOGRAPHIC)



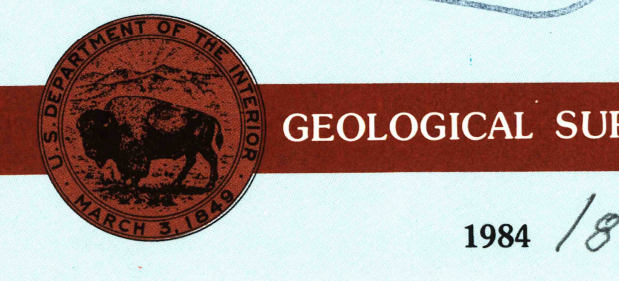
Camp Creek SOUTH DAKOTA

1:100 000-scale metric topographic map



30 X 60 MINUTE QUADRANGLE SHOWING

- Contours and elevations in meters
- Highways, roads and other manmade structures
- Water features
- Woodland areas
- Geographic names



Produced by the United States Geological Survey
 Compiled from USGS 1:24 000-scale topographic maps dated 1955-1983. Planimetry revised from aerial photographs taken 1981 and other source data. Revised information not field checked. Map edited 1984.
 Projection and 10 000-meter grid, zone 13.
 Universal Transverse Mercator
 25 000-foot grid ticks based on South Dakota coordinate system, north zone
 1927 North American Datum
 To place on the predicted North American Datum 1983, move the projection lines 6 meters north and 39 meters east
 There may be private inholdings within the boundaries of the National or State reservations shown on this map

CONTOUR INTERVAL 10 METERS
 NATIONAL GEODETIC DATUM OF 1929
 ELEVATIONS SHOWN TO THE NEAREST METER

THIS MAP COMPLIES WITH NATIONAL MAP ACCURACY STANDARDS

Meters	Feet
2	3.2808
4	6.5617
6	9.8425
8	13.1234
10	16.4042
15	24.6053
20	32.8063
25	41.0074
30	49.2083
40	65.6168
50	82.0264

To convert meters to feet multiply by 3.2808
 To convert feet to meters multiply by 0.3048

FOR SALE BY U. S. GEOLOGICAL SURVEY, DENVER, COLORADO 80225
 OR RESTON, VIRGINIA 22092

Topographic Map Symbols

- Primary highway, hard surface
- Secondary highway, hard surface
- Light duty road, principal street, hard or improved surface
- Other road or street, trail
- Route marker: Interstate, U.S., State
- Railroad: standard gauge, narrow gauge
- Bridge: overpass, underpass
- Tunnel: road, railroad
- Built up area, locality, elevation
- Airport: landing field, landing strip
- National boundary
- State boundary
- County boundary
- National or State reservation boundary
- Land grant boundary
- U.S. public lands survey: range, township, section
- Range, township, section line: protracted
- Power transmission line: pipeline
- Dam; dam with lock
- Cemetery: building
- Wellhead; water well; spring
- Mine shaft; adit or cave; mine, quarry; gravel pit
- Campground; picnic area; U.S. location monument
- Ruins; cliff overhang
- Distorted surface: strip mine, lava, sand
- Contours: index, intermediate, supplementary
- Bathymetric contours: index, intermediate
- Stream, lake: perennial, intermittent
- Rapids, large and small; falls, large and small
- Area to be submerged; marsh, swamp
- Land subject to controlled inundation; woodland
- Scrub; mangrove
- Orchard; vineyard

A pamphlet describing topographic maps is available on request

USGS HISTORICAL MAP ARCHIVES



CAMP CREEK, SOUTH DAKOTA
 44102-E1-TM-100
 1984