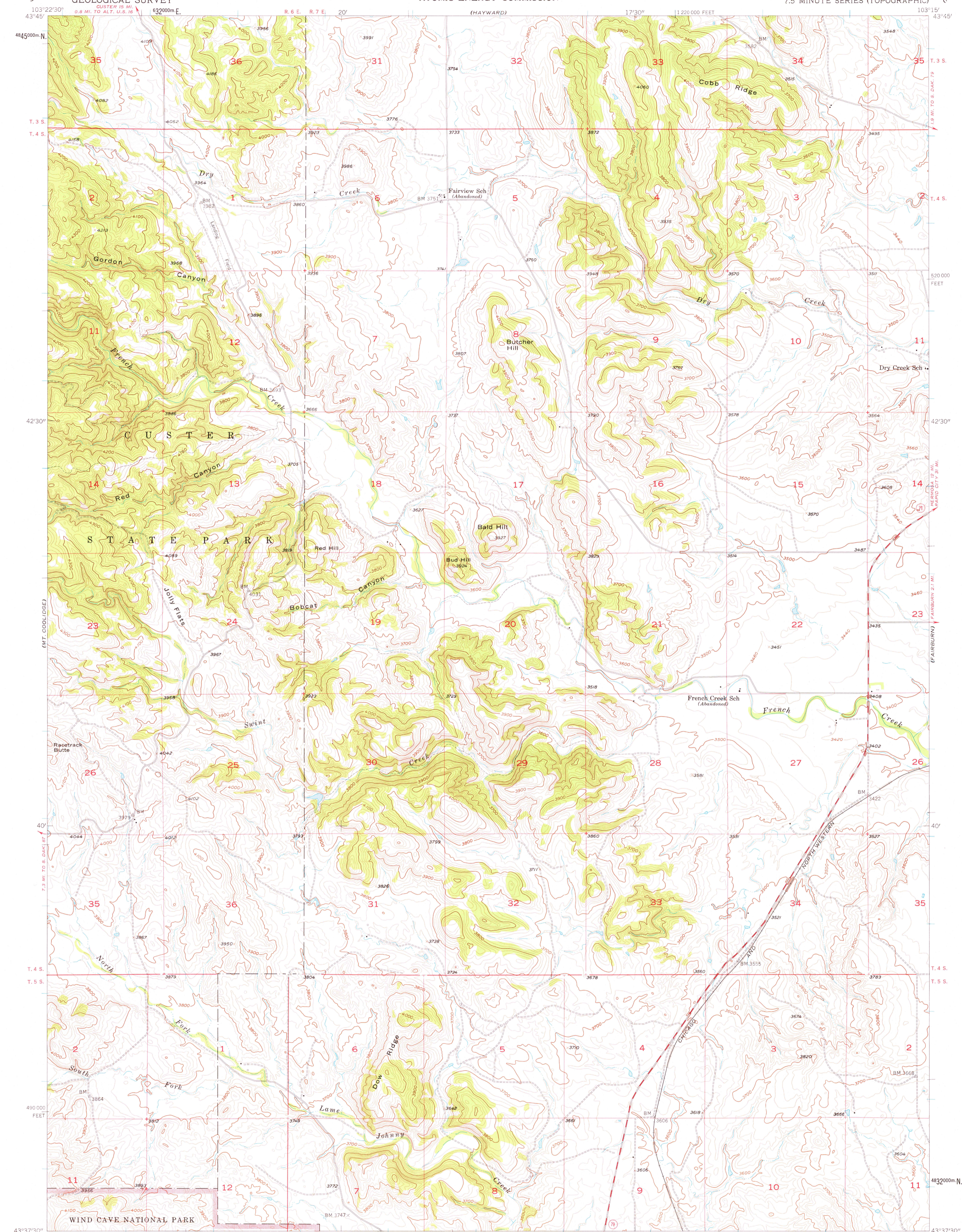
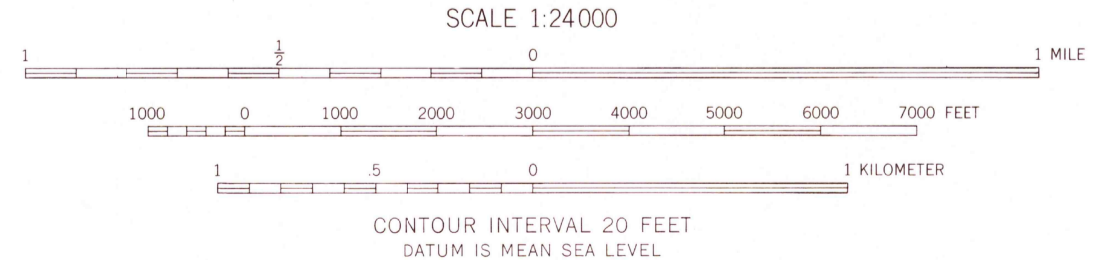
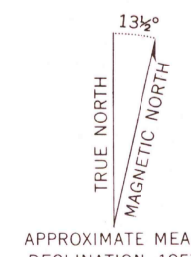


(HELMOSA)



Mapped, edited, and published by the Geological Survey  
Control by USGS and USC&GS  
Topography from aerial photographs by multiplex methods  
Aerial photographs taken 1954. Field check 1957  
Polyconic projection. 1927 North American datum  
10,000-foot grid based on South Dakota coordinate system,  
south zone  
1000-meter Universal Transverse Mercator grid ticks,  
zone 13, shown in blue



ROAD CLASSIFICATION

Medium-duty	Light-duty
Unimproved dirt	State Route

THIS MAP COMPLIES WITH NATIONAL MAP ACCURACY STANDARDS  
FOR SALE BY U. S. GEOLOGICAL SURVEY, DENVER 25, COLORADO OR WASHINGTON 25, D. C.  
A FOLDER DESCRIBING TOPOGRAPHIC MAPS AND SYMBOLS IS AVAILABLE ON REQUEST

USGS  
Historical File  
Topographic Division

BUTCHER HILL, S. DAK.  
N4337.5—W10315.7/5

1957

MAY 0 2 1977

1200