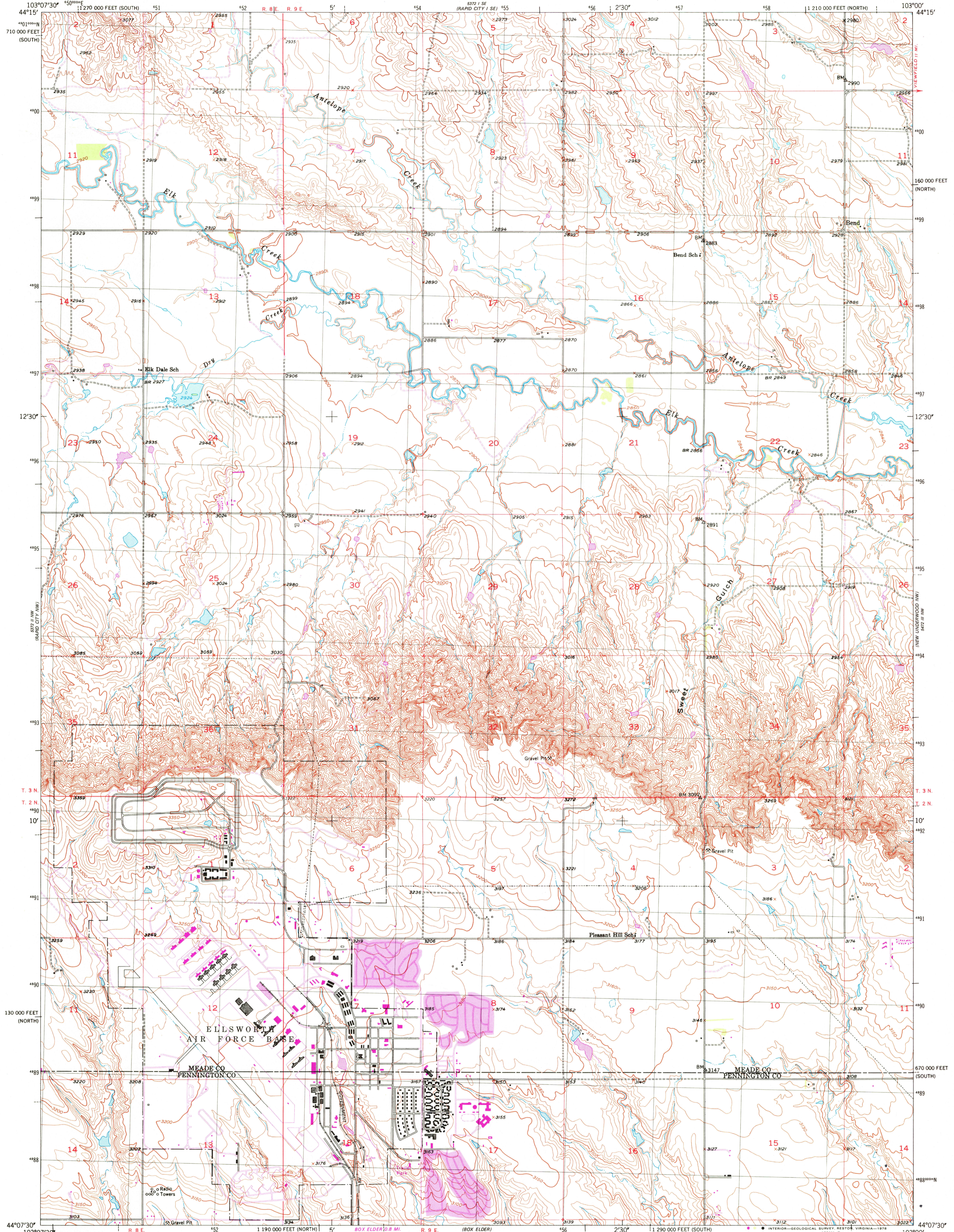


UNITED STATES  
DEPARTMENT OF THE INTERIOR  
GEOLOGICAL SURVEY

BEND QUADRANGLE  
SOUTH DAKOTA  
7.5 MINUTE SERIES (TOPOGRAPHIC)



Mapped, edited, and published by the Geological Survey

Control by USGS and USC&GS

Topography from aerial photographs by multiplex methods

Aerial photographs taken 1952. Field checked 1953

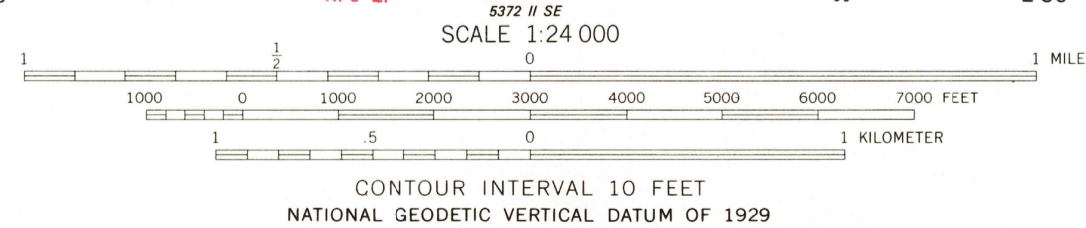
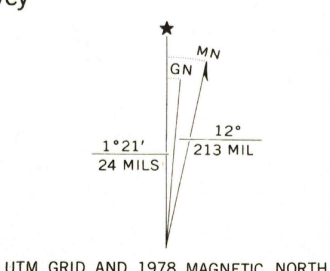
Polyconic projection. 1927 North American datum  
10,000-foot grids based on South Dakota coordinate system,  
north and south zones

1000-meter Universal Transverse Mercator grid, zone 13

There may be private inholdings within the boundaries of the National or State reservations shown on this map

Revisions shown in purple and woodland compiled from aerial photographs taken 1976 and other source data. This information not field checked. Map edited 1978.

Purple tint indicates extension of urban areas



ROAD CLASSIFICATION

Primary highway, all weather, hard surface	Light-duty road, all weather, improved surface
Secondary highway, all weather, hard surface	Unimproved road, fair or dry weather
Interstate Route	U. S. Route
	State Route

USGS  
Historical File  
Topographic Division

BEND, S. DAK.  
N4407.5-W103007.5

1953  
PHOTOREVISED 1978  
AMS 5372 II NE-SERIES V873

THIS MAP COMPLIES WITH NATIONAL MAP ACCURACY STANDARDS  
FOR SALE BY U. S. GEOLOGICAL SURVEY, DENVER, COLORADO 80225, OR RESTON, VIRGINIA 22092  
A FOLDER DESCRIBING TOPOGRAPHIC MAPS AND SYMBOLS IS AVAILABLE ON REQUEST

MAR 14 1979  
3220