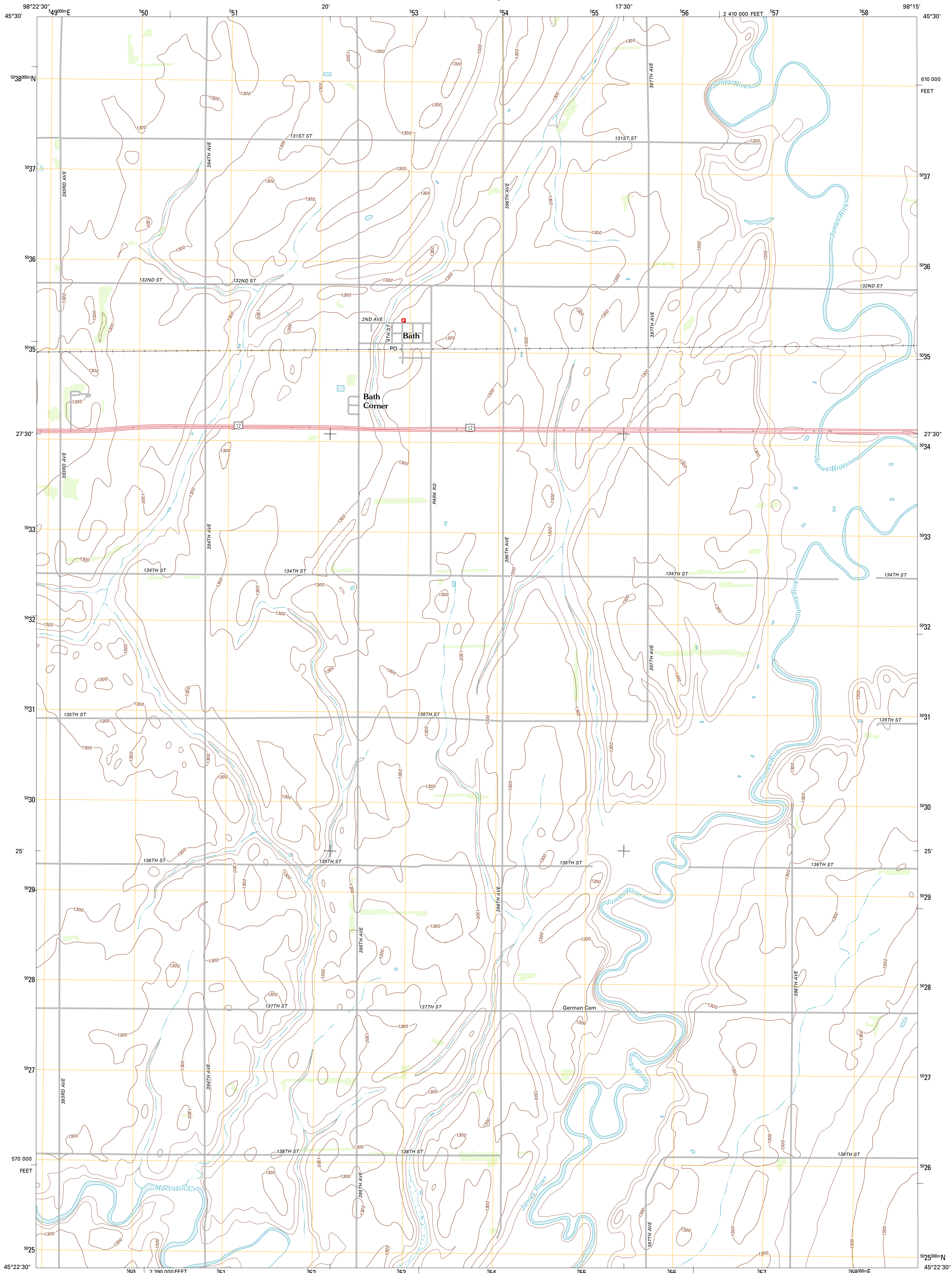




U.S. DEPARTMENT OF THE INTERIOR  
U. S. GEOLOGICAL SURVEY

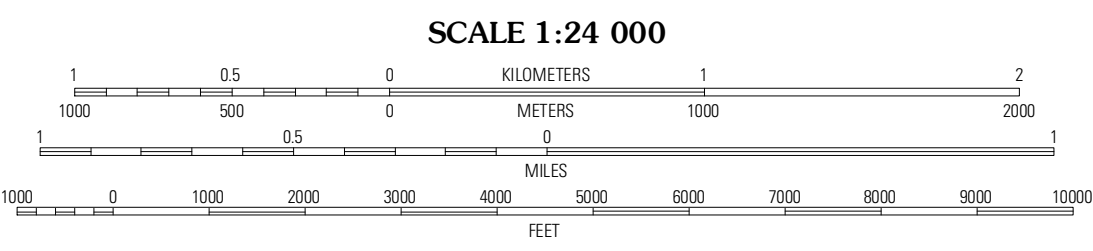
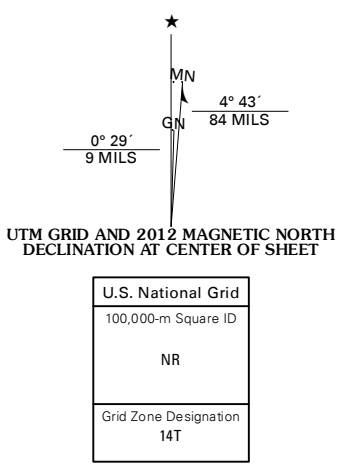


BATH QUADRANGLE  
SOUTH DAKOTA-BROWN CO.  
7.5-MINUTE SERIES

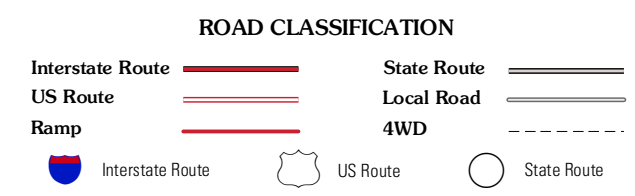


Produced by the United States Geological Survey  
North American Datum of 1983 (NAD83)  
World Geodetic System of 1984 (WGS84). Projection and  
1 000-meter grid: Universal Transverse Mercator, Zone 14T  
10 000-foot ticks: South Dakota Coordinate System of 1983  
(north zone)

Imagery.....NAP, July 2010 - August 2010  
Roads.....©2006-2011 TomTom  
Names.....National Hydrography Dataset, 2011  
Hydrography.....National Elevation Dataset, 1999  
Contours.....National Elevation Dataset, 1999  
Boundaries.....Census, IBWC, IBC, USGS, 1972 - 2010



CONTOUR INTERVAL 10 FEET  
NORTH AMERICAN VERTICAL DATUM OF 1988  
This map was produced to conform with the  
National Geospatial Program US Topo Product Standard, 2011.  
A metadata file associated with this product is draft version 0.6.3



QUADRANGLE LOCATION

Ornday	Columbia	Putney
Aberdeen East	<b>Bath</b>	James
Wamer	Straford	Groton SW

BATH, SD  
2012

ADJOINING 7.5' QUADRANGLES