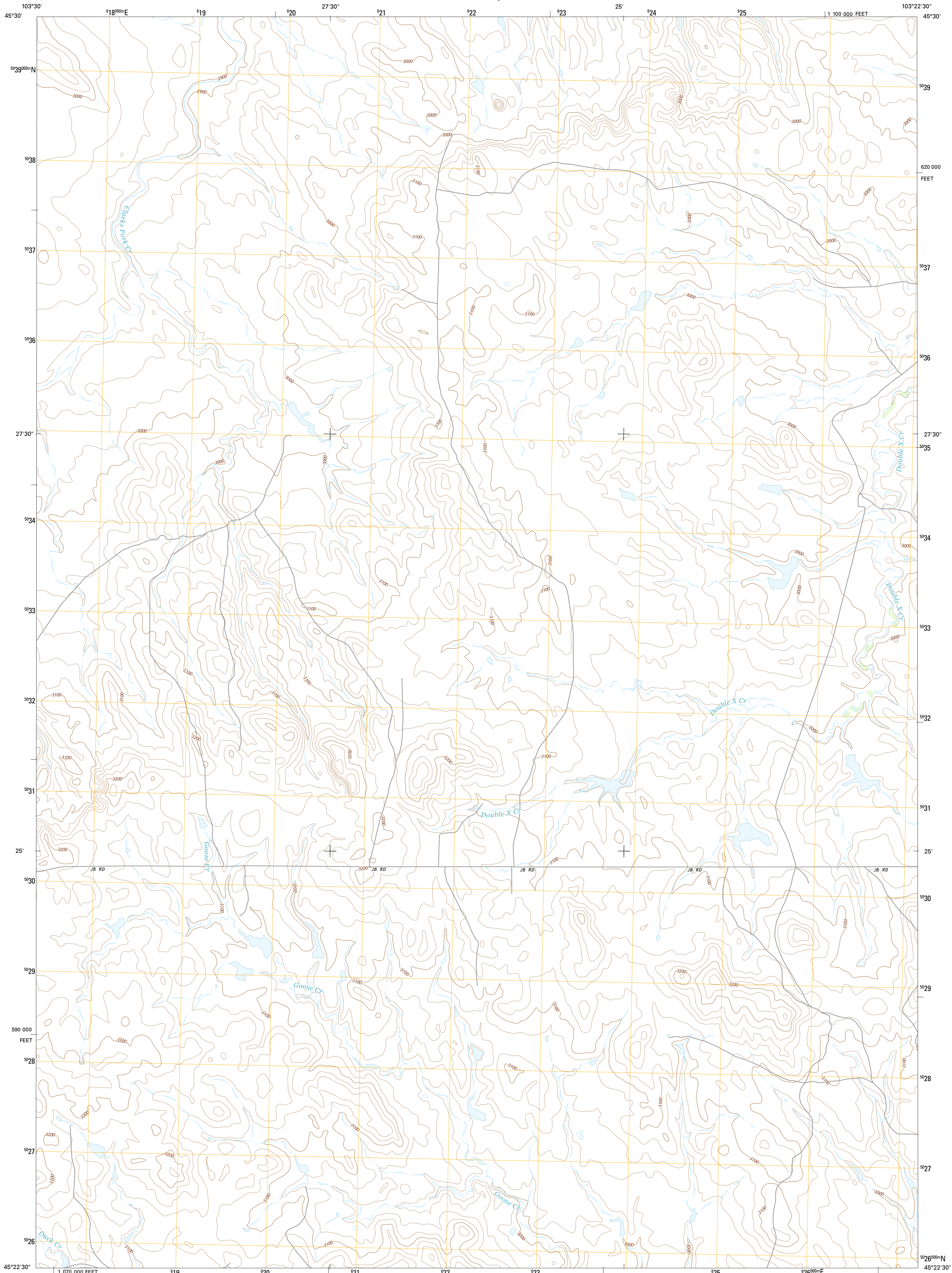




U.S. DEPARTMENT OF THE INTERIOR
U.S. GEOLOGICAL SURVEY



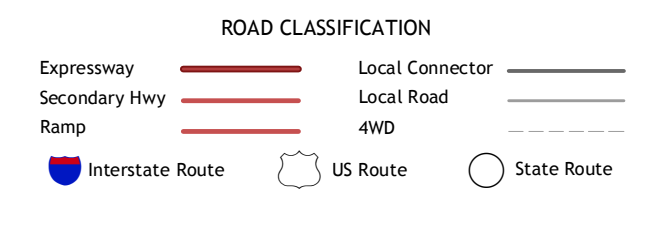
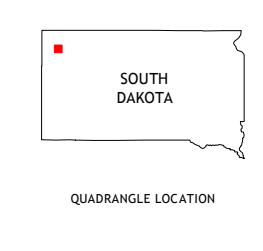
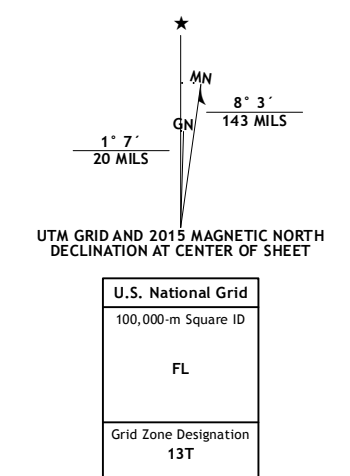
BAMS BUTTE NW QUADRANGLE
SOUTH DAKOTA-HARDING CO.
7.5-MINUTE SERIES



Produced by the United States Geological Survey
North American Datum of 1983 (NAD83)
World Geodetic System of 1984 (WGS84), Projection and
1 000-meter grid: Universal Transverse Mercator, Zone 13T
10 000-foot ticks: South Dakota Coordinate System of 1983
(north zone)

This map is not a legal document. Boundaries may be
generalized for this map scale. Private lands within government
reservations may not be shown. Obtain permission before
entering private lands.

Imagery:.....N.A.I.P., September 2014
Roads:.....HERE, ©2013 - 2014
Names:.....GNIS, 2015
Hydrography:.....National Hydrography Dataset, 2014
Contours:.....National Elevation Dataset, 2012
Boundaries:.....Multiple sources; see metadata file 1972 - 2015
Public Land Survey System:.....BLM, 2015



ADJOINING QUADRANGLES

1	2	3
4	5	6
7	8	

1 Buffalo
2 Sheep Pen Draw SW
3 Sheep Pen Draw SE
4 Redg NE
5 Bams Butte
6 Redg
7 Roundup Butte
8 Bams Butte SE

BAMS BUTTE NW, SD
2015

