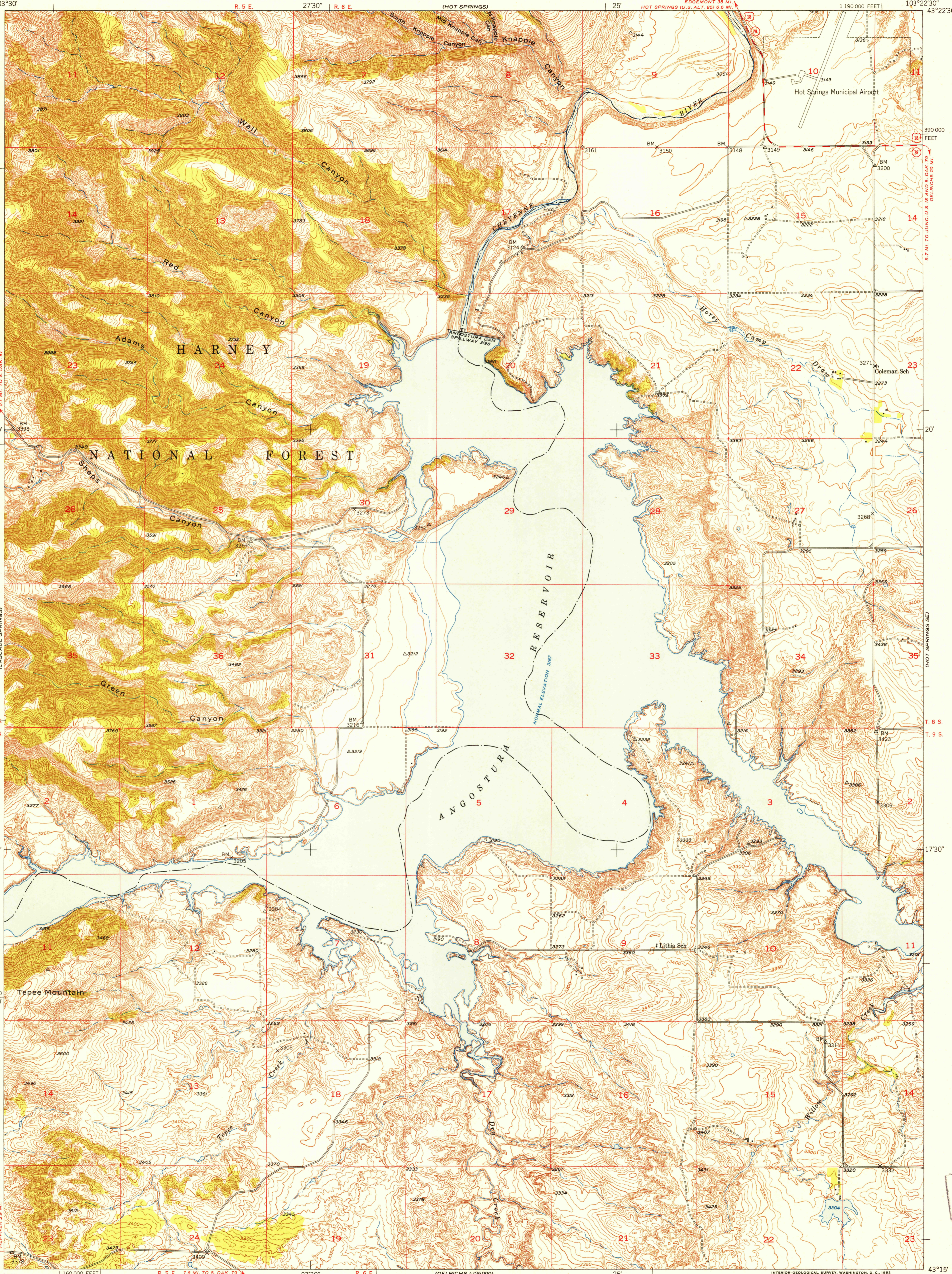
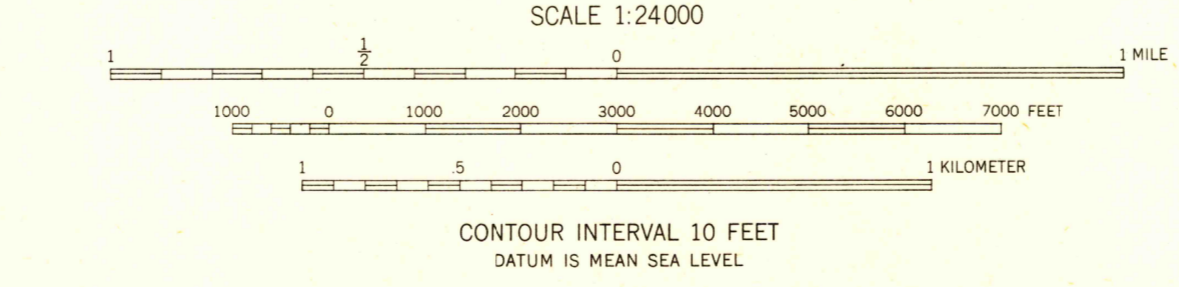
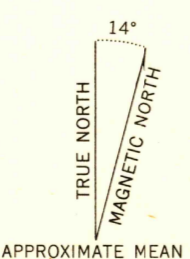


U.S.G.S.
FILE COPY
Inspection and Keating.

U.S.G.S.
FILE COPY
Inspection and Keating.



Mapped, edited, and published by the Geological Survey as part of the Department of the Interior program for the development of the Missouri River Basin. Control by USGS, USC&GS, and US Bureau of Reclamation. Topography from aerial photographs by multiplex methods. Aerial photographs taken 1948. Field check 1950. Polyconic projection. 1927 North American datum 10,000-foot grid based on South Dakota coordinate system, south zone.



USGS
HISTORICAL FILE
TOPOGRAPHIC DIVISION

ROAD CLASSIFICATION

Heavy-duty	4 LANE 6 LANE	Light-duty
Medium-duty	4 LANE 6 LANE	Unimproved dirt

U.S. Route State Route

ANGOSTURA RESERVOIR, S. DAK.
N4315-W10322.5/7.5
1950

THIS MAP COMPLIES WITH NATIONAL MAP ACCURACY STANDARDS
FOR SALE BY U. S. GEOLOGICAL SURVEY, FEDERAL CENTER, DENVER, COLORADO OR WASHINGTON 25, D. C.
A FOLDER DESCRIBING TOPOGRAPHIC MAPS AND SYMBOLS IS AVAILABLE ON REQUEST