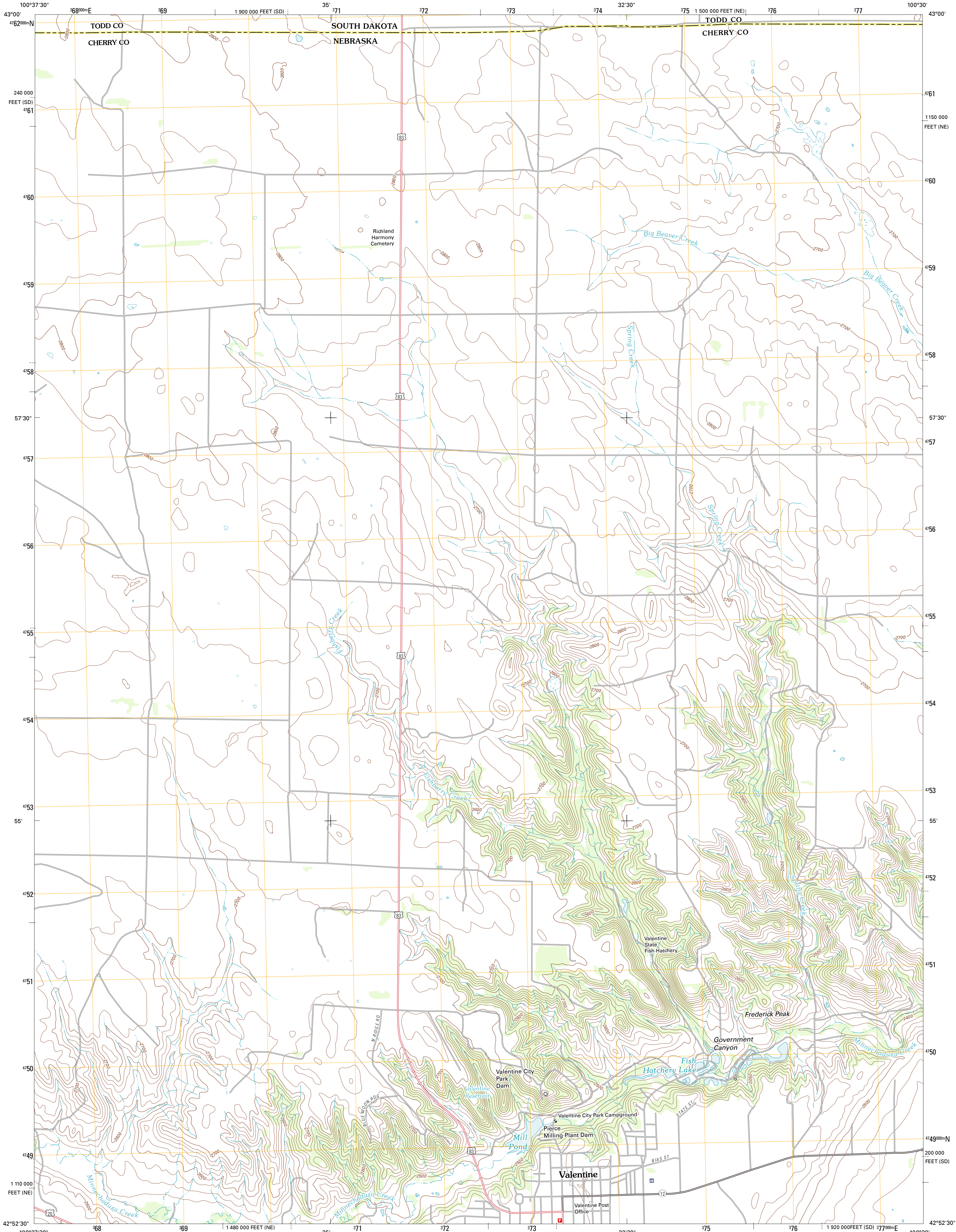




U.S. DEPARTMENT OF THE INTERIOR
U. S. GEOLOGICAL SURVEY

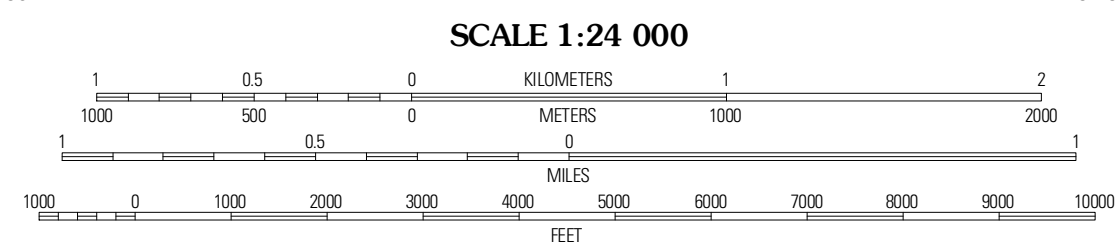
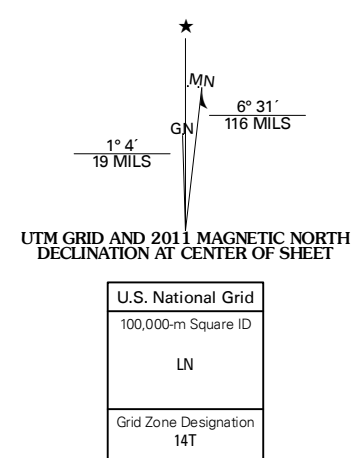


VALENTINE NORTH QUADRANGLE
NEBRASKA-SOUTH DAKOTA
7.5-MINUTE SERIES



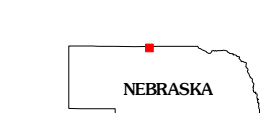
Produced by the United States Geological Survey
North American Datum of 1983 (NAD83)
World Geodetic System of 1984 (WGS84). Projection and
1 000-meter grid: Universal Transverse Mercator, Zone 14T
10 000-foot ticks: Nebraska Coordinate System of 1983,
South Dakota Coordinate System of 1983 (south zone)

Imagery:.....NAIP, July 2010
Roads:.....©2006-2011 TomTom
Names:.....GNS, 2011
Hydrography:.....National Hydrography Dataset, 2009
Contours:.....National Elevation Dataset, 2003
Boundaries:.....Census, IBWC, IBC, USGS, 1972 - 2010



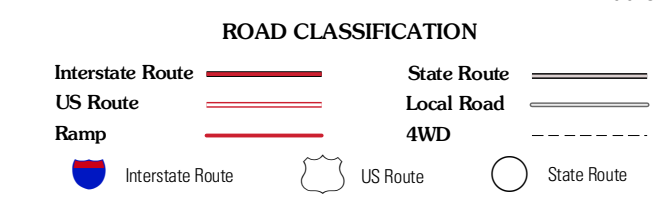
CONTOUR INTERVAL 20 FEET
NORTH AMERICAN VERTICAL DATUM OF 1988

This map was produced to conform with the
National Geospatial Program US Topo Product Standard, 2011.
A metadata file associated with this product is draft version 0.6.1



QUADRANGLE LOCATION

Osborne SW	Osborne SE	Littleburg
Crookston East	Valentine North	Cornell Dam
Valentine SW	Valentine South	Thatcher



VALENTINE NORTH, NE-SD
2011

ADJOINING 7.5' QUADRANGLES