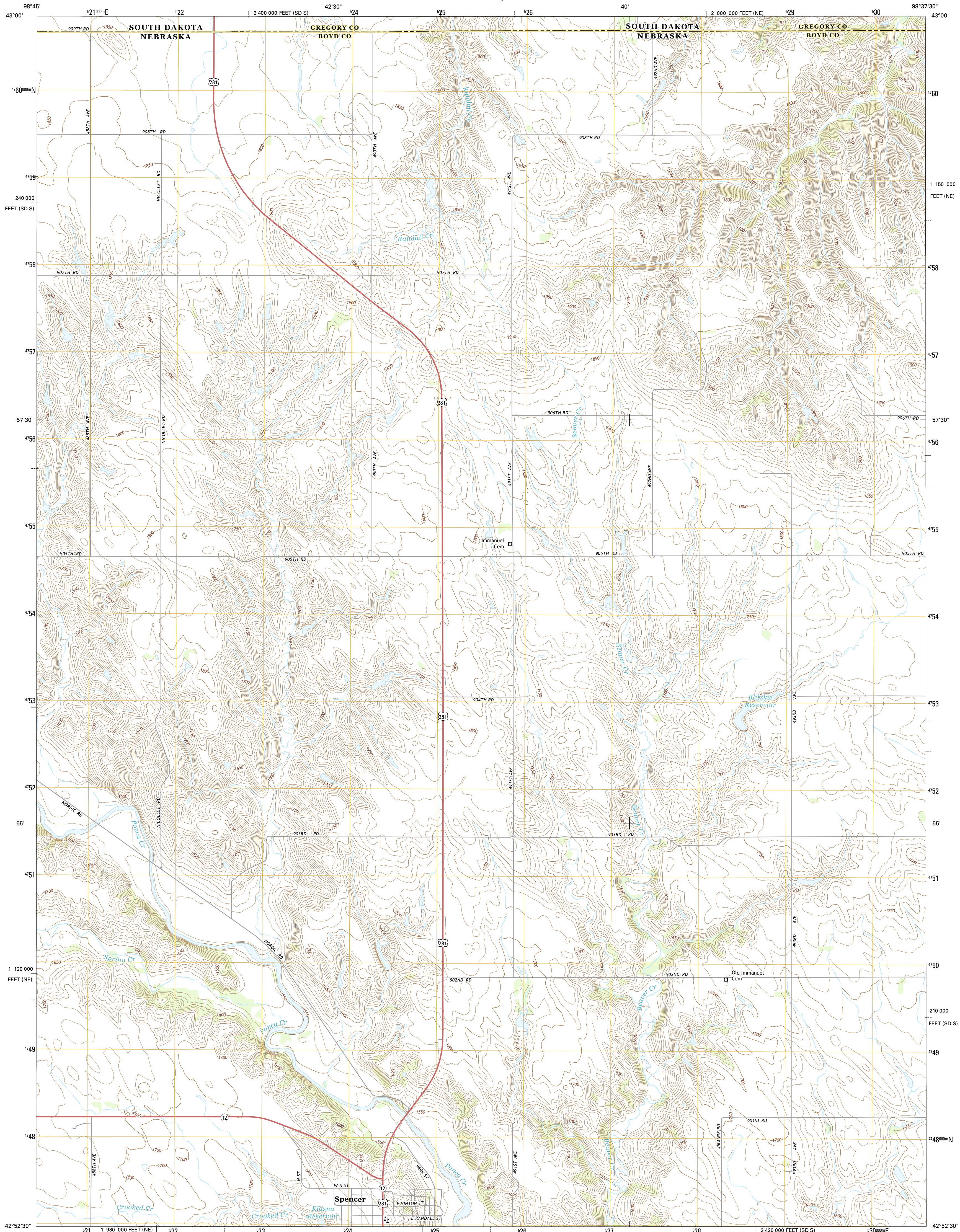




U.S. DEPARTMENT OF THE INTERIOR
U.S. GEOLOGICAL SURVEY



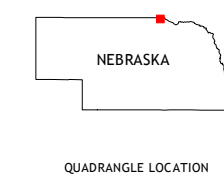
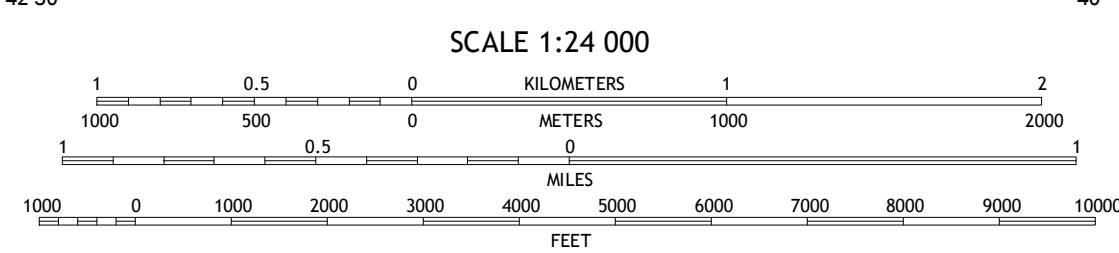
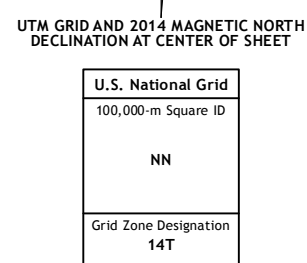
SPENCER NORTH QUADRANGLE
NEBRASKA-SOUTH DAKOTA
7.5-MINUTE SERIES



Produced by the United States Geological Survey
North American Datum of 1983 (NAD83)
World Geodetic System of 1984 (WGS84), Projection and
1 000-meter grid: Universal Transverse Mercator, Zone 14T
10 000-foot ticks: Nebraska Coordinate System of 1983, South
Dakota Coordinate System of 1983 (south zone)

This map is not a legal document. Boundaries may be
generalized for this map scale. Private lands within government
reservations may not be shown. Obtain permission before
entering private lands.

Imagery.....N.A.P., July 2012
Roads.....HERE, ©2013
Names.....GNIS, 2013
Hydrography.....National Hydrography Dataset, 2012
Contours.....National Elevation Dataset, 2003
Boundaries.....Multiple sources; see metadata file 1972 - 2014



QUADRANGLE LOCATION

ROAD CLASSIFICATION

- Expressway
- Secondary Hwy
- Ramp
- Interstate Route
- Local Connector
- Local Road
- 4WD
- US Route
- State Route

1	2	3
4	5	6
7	8	

ADJOINING QUADRANGLES

- 1 South Scalp Creek
- 2 Lake Andes SW
- 3 Fort Randall Dam
- 4 Butte
- 5 Gross
- 6 Butte SE
- 7 Spencer South
- 8 Bristow

SPENCER NORTH, NE-SD
2014



NSN 7540-01-344-347
USGS X 24 K 4 2 7 4
NSA REF NO. U.S.G.S. X 24 K 4 2 7 4