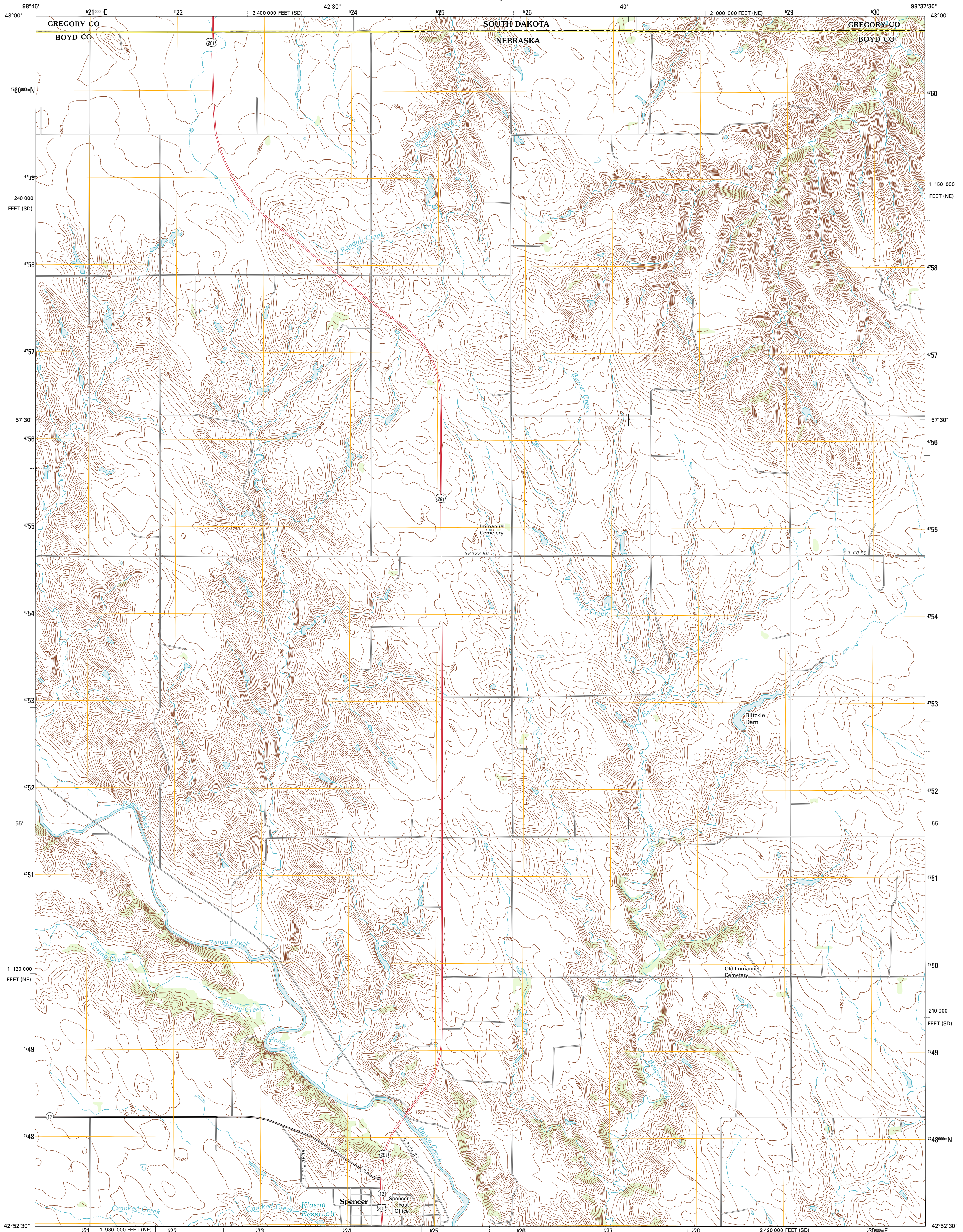




U.S. DEPARTMENT OF THE INTERIOR  
U. S. GEOLOGICAL SURVEY

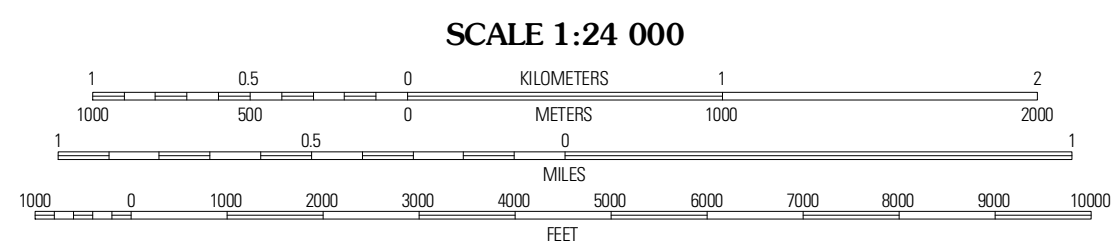
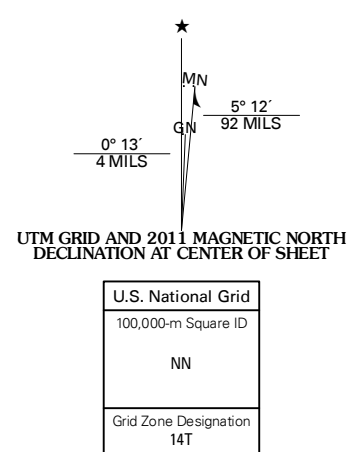


SPENCER NORTH QUADRANGLE  
NEBRASKA-SOUTH DAKOTA  
7.5-MINUTE SERIES

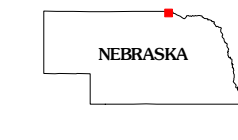


Produced by the United States Geological Survey  
North American Datum of 1983 (NAD83)  
World Geodetic System of 1984 (WGS84). Projection and  
1 000-meter grid: Universal Transverse Mercator, Zone 14T  
10 000-foot ticks: Nebraska Coordinate System of 1983,  
South Dakota Coordinate System of 1983 (south zone)

Imagery:.....NAIP, July 2010  
Roads:.....©2006-2011 TomTom  
Names:.....GNIS, 2011  
Hydrography:.....National Hydrography Dataset, 2009  
Contours:.....National Elevation Dataset, 2003  
Boundaries:.....Census, IBWC, IBC, USGS, 1972 - 2010



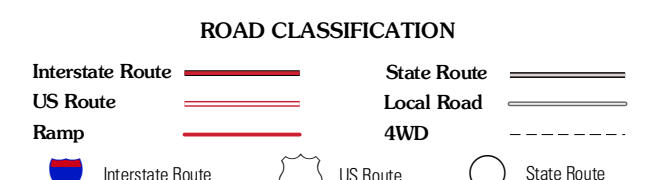
CONTOUR INTERVAL 10 FEET  
NORTH AMERICAN VERTICAL DATUM OF 1988  
This map was produced to conform with the  
National Geospatial Program US Topo Product Standard, 2011.  
A metadata file associated with this product is draft version 0.6.1



QUADRANGLE LOCATION

South Scalp Creek	Lake Andes SW	Fort Randall Dam
Butte SE	Spencer North	Gross South
Butte SE	Spencer South	Blinow

ADJOINING 7.5' QUADRANGLES



SPENCER NORTH, NE-SD  
2011