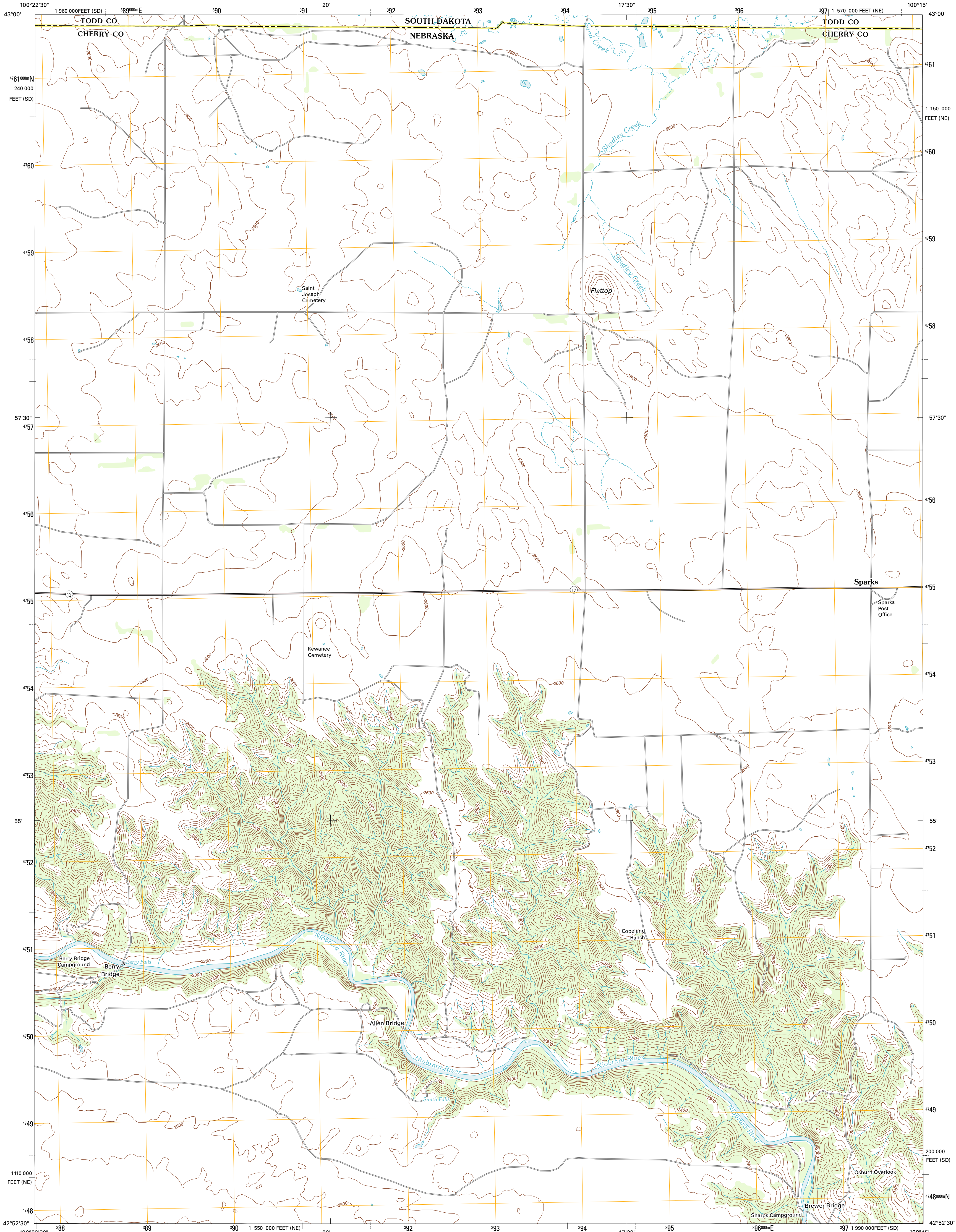




U.S. DEPARTMENT OF THE INTERIOR  
U. S. GEOLOGICAL SURVEY

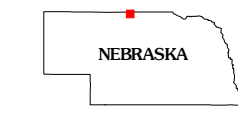
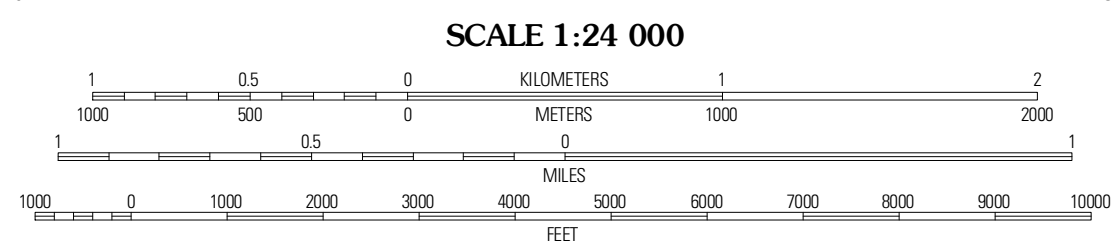
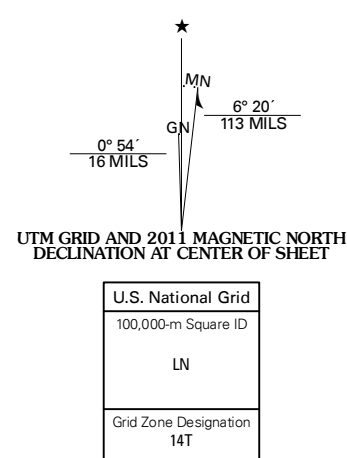


SPARKS QUADRANGLE  
NEBRASKA-SOUTH DAKOTA  
7.5-MINUTE SERIES



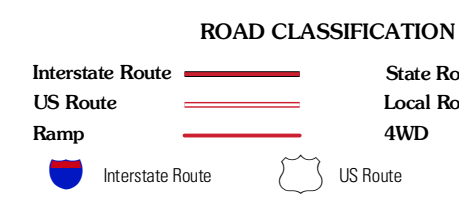
Produced by the United States Geological Survey  
North American Datum of 1983 (NAD83)  
World Geodetic System of 1984 (WGS84). Projection and  
1 000-meter grid: Universal Transverse Mercator, Zone 14T  
10 000-foot ticks: Nebraska Coordinate System of 1983,  
South Dakota Coordinate System of 1983 (south zone)

Imagery: N.A.I.P., July 2010  
Roads: ©2006-2011 TomTom  
Names: GNS, 2011  
Hydrography: National Hydrography Dataset, 2009  
Contours: National Elevation Dataset, 2003  
Boundaries: Census, IBWC, IBC, USGS, 1972 - 2010



QUADRANGLE LOCATION

Littleburg	Hidden Timber SE	Keyapah
Cornell Dam	Sparks	Norden NW
Thatcher	Sparks SE	Muleshoe Creek



CONTOUR INTERVAL 20 FEET  
NORTH AMERICAN VERTICAL DATUM OF 1988

This map was produced to conform with the  
National Geospatial Program US Topo Product Standard, 2011.  
A metadata file associated with this product is draft version 0.6.1

SPARKS, NE-SD  
2011

ADJOINING 7.5' QUADRANGLES