

# O'Neill

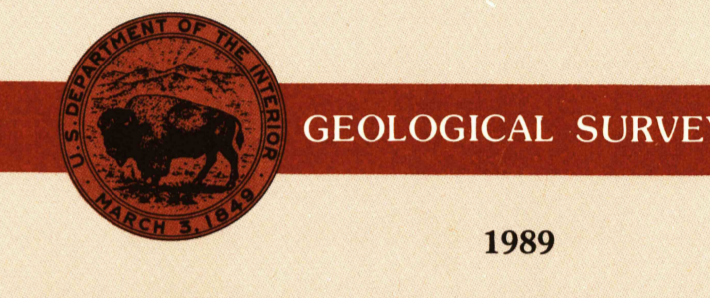
NEBRASKA-SOUTH DAKOTA

1:250 000-scale metric topographic map



### 1 X 2 DEGREE QUADRANGLE SHOWING

- Contours and elevations in meters
- Highways, roads and other manmade structures
- Water features
- Woodland areas
- Geographic names



Produced by the United States Geological Survey  
 Compiled from USGS 1:100 000-scale maps dated 1985-86  
 Map edited 1989. Supersedes map dated 1971  
 North American Datum of 1983 (NAD 83). Projection and  
 10 000-meter grid: Universal Transverse Mercator, zone 14  
 25 000-meter grid ticks: Nebraska, and South Dakota (south  
 zone) Coordinate Systems of 1983  
 The difference between NAD 83 and North American Datum of  
 1927 (NAD 27) for 7.5 minute intersections is given in USGS  
 Bulletin 1875  
 There may be private inholdings within the boundaries of  
 the National or State reservations shown on this map

1989 MAGNETIC DECLINATION FROM THE NORTH VARIES  
 FROM 7° 10' (E) 1/2 MILE EASTWARD FROM THE CENTER OF THE  
 WEST EDGE TO 7° 12' 1/2 MILE EASTWARD FROM THE CENTER  
 OF THE EAST EDGE. MEAN ANNUAL CHANGE IS 7.2 WESTERLY

CONTOUR INTERVAL 20 METERS  
 NATIONAL GEODETIC VERTICAL DATUM OF 1929  
 ELEVATIONS SHOWN TO THE NEAREST METER

USGS MAPS CONFORM WITH NATIONAL MAP ACCURACY STANDARDS

AUG 27 1990

REC'D FILE COPY

Meters	Feet	Meters	Feet
1	3.2808	1	3.2808
2	6.5617	2	6.5616
3	9.8425	3	9.8414
4	13.1234	4	13.1202
5	16.4042	5	16.4000
6	19.6850	6	19.6788
7	22.9659	7	22.9576
8	26.2467	8	26.2364
9	29.5276	9	29.5152
10	32.8084	10	32.8000

To convert meters to feet multiply by 3.2808  
 To convert feet to meters multiply by 0.3048

ADJOINING MAPS	1	2	3	4	5	6	7	8

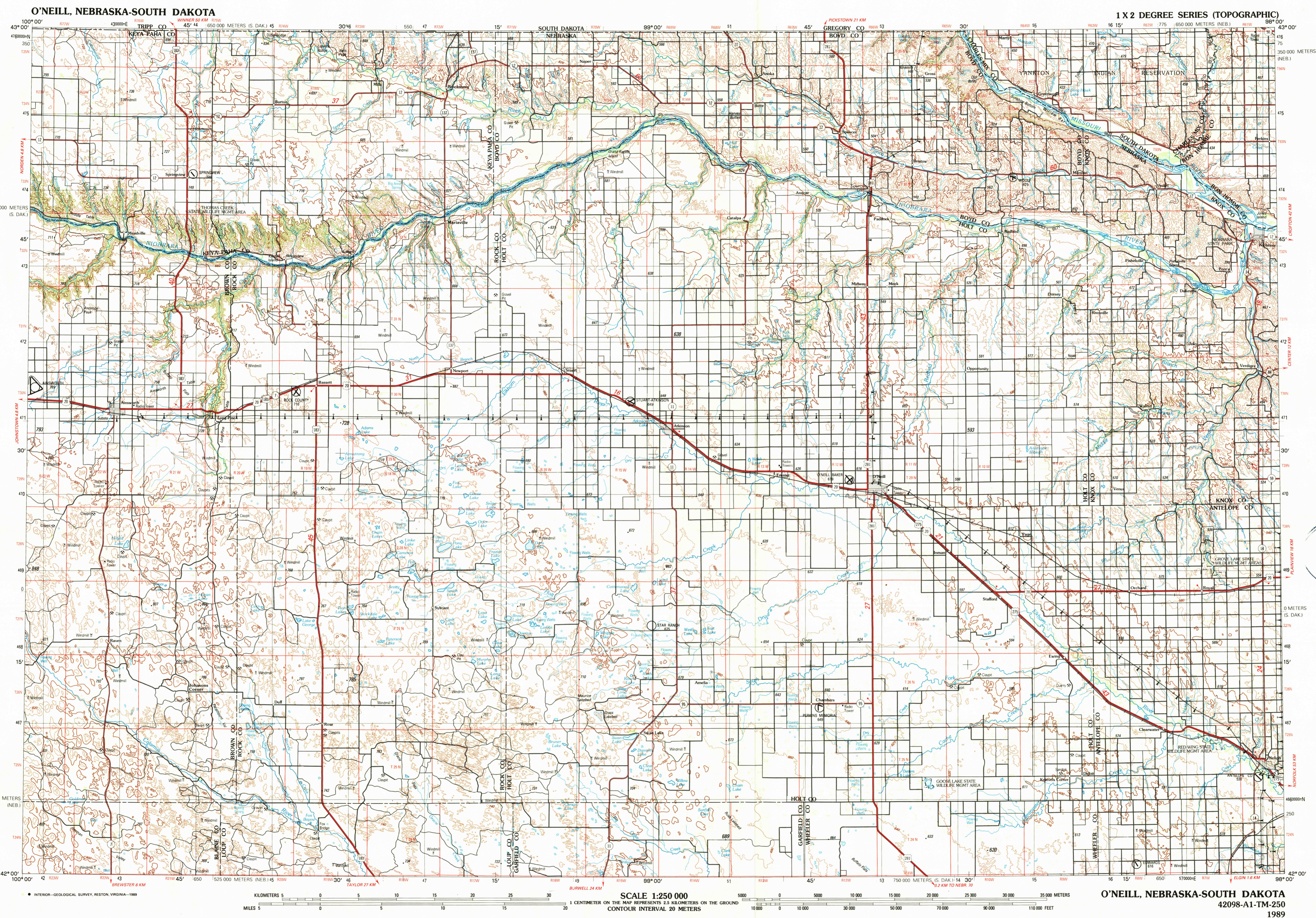
- Martin
- Mitchell
- Sioux Falls
- Valentine
- Sioux City
- North Platte
- Broken Bow
- Fremont

FOR SALE BY U. S. GEOLOGICAL SURVEY  
 DENVER, COLORADO 80225, OR RESTON, VIRGINIA 22092

### Topographic Map Symbols

- Dual highway, interchange
- Primary highway, hard surface
- Secondary highway, hard surface
- Light duty road, hard or improved surface
- Other road, trail
- Route marker: Interstate, U.S., State
- Bridge: overpass, underpass
- Tunnel: road; railroad
- Railroad: standard gauge; single, multiple track
- Railroad: narrow gauge; single, multiple track
- Build-up area: locality; elevation
- Airport: runway pattern known; unknown
- National boundary
- State boundary
- County boundary
- National or State reservation boundary
- Land grant boundary
- U.S. public lands survey: range, township (surveyed)
- U.S. public lands survey: range, township (contracted)
- Powerline: pipeline; aboveground, underground
- Dam; landmark feature: landmark building
- Well: water, other; spring; tank
- Cave: mine, quarry; oil platform
- Landmark area: landmark railroad
- Disturbed surface: strip mine, lava; sand
- Contours: index; intermediate; supplementary
- Bathymetric contours: index; primary
- Bathymetric contours: intermediate; supplementary
- Stream, lake: perennial; intermittent
- Rapids, large and small; falls, large and small
- Land subject to controlled inundation: marsh, swamp
- Woodland: orchard, vineyard
- Mangrove

Figures in red denote approximate distances in kilometers between markers  
 A pamphlet describing topographic maps is available on request



• INTERIOR—GEOLOGICAL SURVEY, RESTON, VIRGINIA—1989

KILOMETERS 0 5 10 15 20 25 30

1 CENTIMETER ON THE MAP REPRESENTS 2.5 KILOMETERS ON THE GROUND

CONTOUR INTERVAL 20 METERS

5000 10000 15000 20000 25000 30000 35000 METERS

0 10000 20000 30000 40000 50000 60000 70000 80000 90000 110000 FEET

**O'NEILL, NEBRASKA-SOUTH DAKOTA**  
**42098-A1-TM-250**  
**1989**