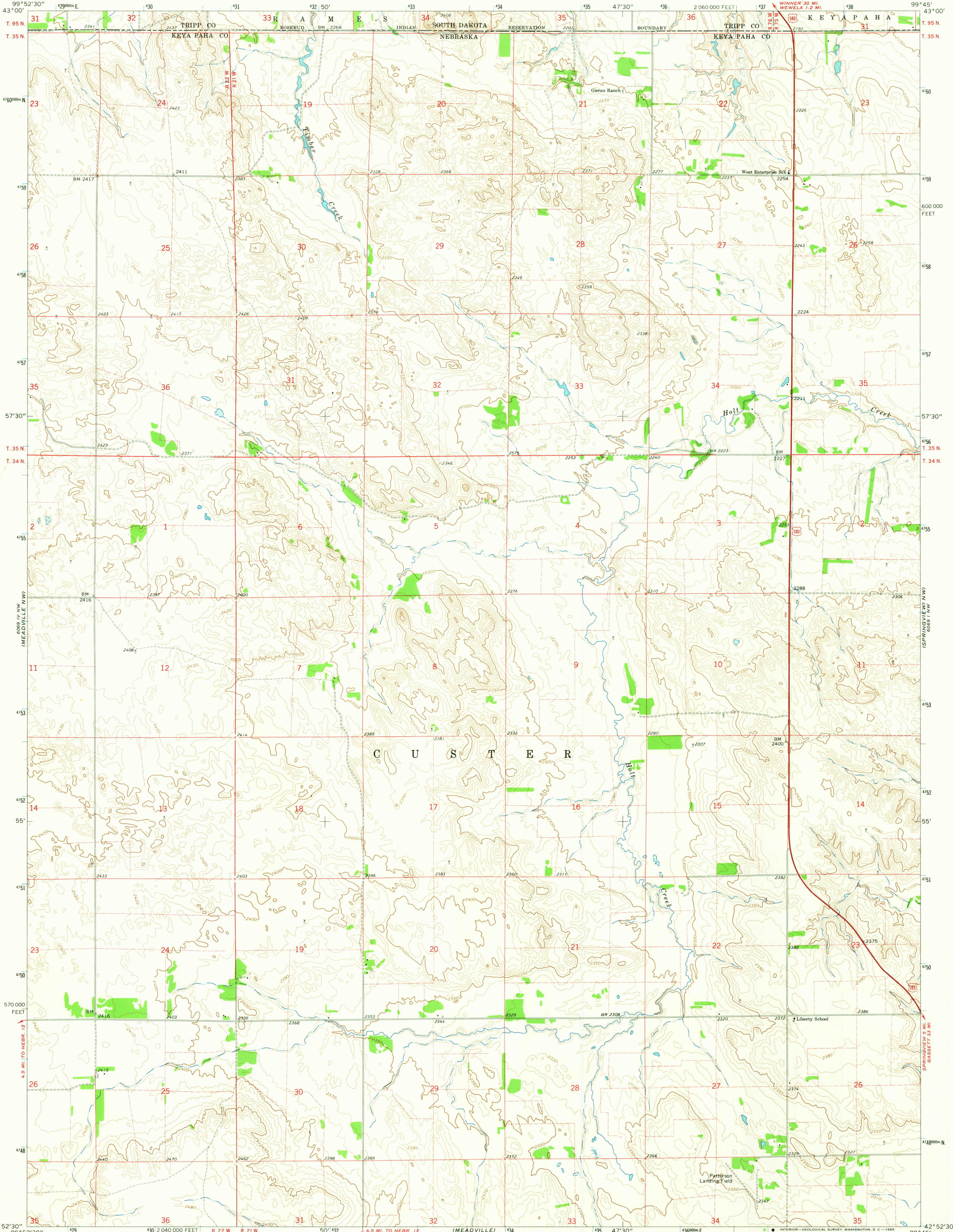
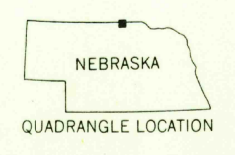
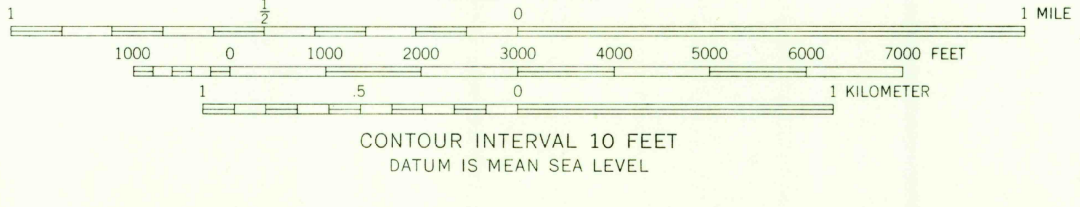
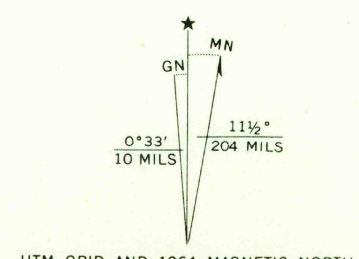


6099 IV NW  
(DALLAS SW)



Mapped, edited, and published by the Geological Survey as part of the Department of the Interior program for the development of the Missouri River Basin Control by USGS and USC&GS  
Topography by photogrammetric methods from aerial photographs taken 1962. Field checked 1964  
Polyconic projection. 1927 North American datum 10,000-foot grid based on Nebraska coordinate system, north zone 14, shown in blue  
Fine red dashed lines indicate selected fence and field lines where generally visible on aerial photographs. This information is unchecked



ROAD CLASSIFICATION  
Heavy-duty ——— Light-duty ———  
Unimproved dirt - - - - -  
U.S. Route

MEADVILLE, NE, NEBR.-S. DAK.  
N4252.5-W9945/7.5

1964  
AMS 6069 IV NE-SERIES V875

THIS MAP COMPLIES WITH NATIONAL MAP ACCURACY STANDARDS  
FOR SALE BY U.S. GEOLOGICAL SURVEY, DENVER, COLORADO 80225, OR WASHINGTON, D. C. 20242  
A FOLDER DESCRIBING TOPOGRAPHIC MAPS AND SYMBOLS IS AVAILABLE ON REQUEST

USGS  
Historical File  
Topographic Division

3185  
DEC 8 1965

U.S.G.S.  
FILE COPY  
TOPOGRAPHIC DIVISION