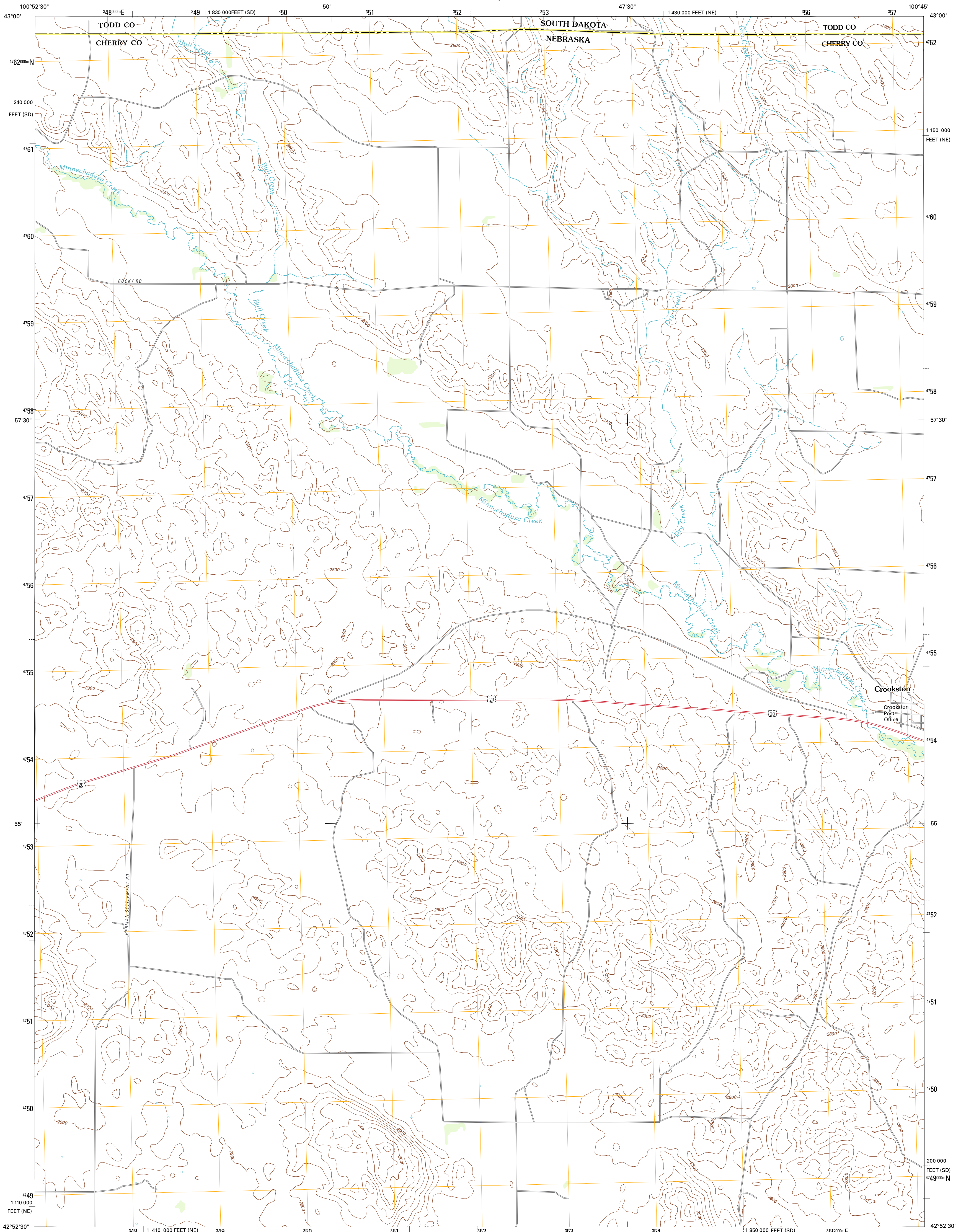




U.S. DEPARTMENT OF THE INTERIOR  
U. S. GEOLOGICAL SURVEY

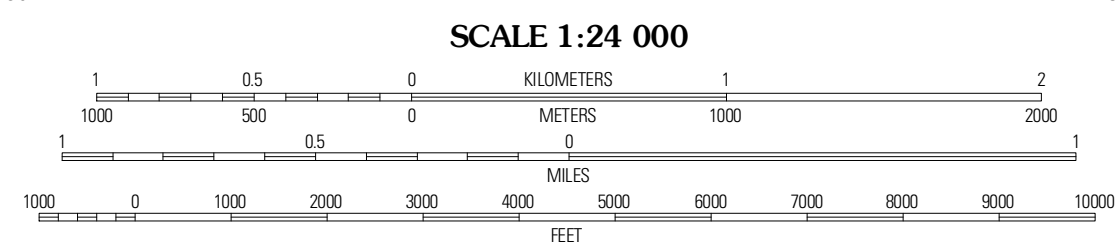
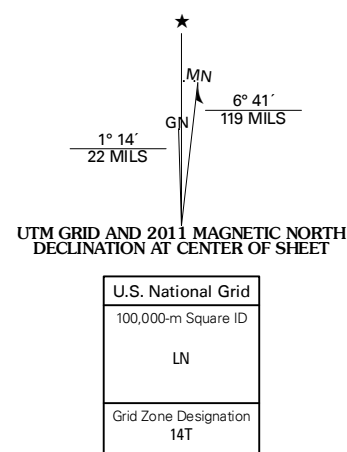


CROOKSTON WEST QUADRANGLE  
NEBRASKA-SOUTH DAKOTA  
7.5-MINUTE SERIES



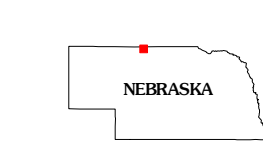
Produced by the United States Geological Survey  
North American Datum of 1983 (NAD83)  
World Geodetic System of 1984 (WGS84). Projection and  
1 000-meter grid: Universal Transverse Mercator, Zone 14T  
10 000-foot ticks: Nebraska Coordinate System of 1983.  
South Dakota Coordinate System of 1983 (south zone)

Imagery.....NAIP, June 2010 - July 2010  
Roads.....©2006-2011 TomTom  
Names.....GNS, 2011  
Hydrography.....National Hydrography Dataset, 2009  
Contours.....National Elevation Dataset, 2003  
Boundaries.....Census, IBWC, IBC, USGS, 1972 - 2010



CONTOUR INTERVAL 20 FEET  
NORTH AMERICAN VERTICAL DATUM OF 1988

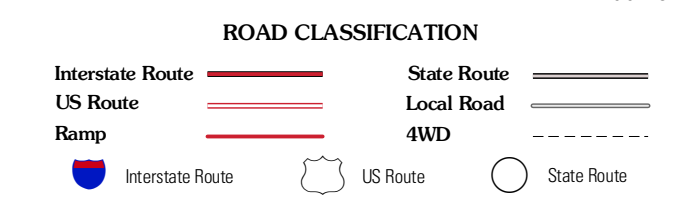
This map was produced to conform with the  
National Geospatial Program US Topo Product Standard, 2011.  
A metadata file associated with this product is draft version 0.6.1



QUADRANGLE LOCATION

Saint Francis SW	Saint Francis SE	Osborne SW
Kilgore	Crookston West	Crookston East
Cooper Canyon	Kilgore SE	Valentine SW

ADJOINING 7.5' QUADRANGLES



CROOKSTON WEST, NE-SD  
2011