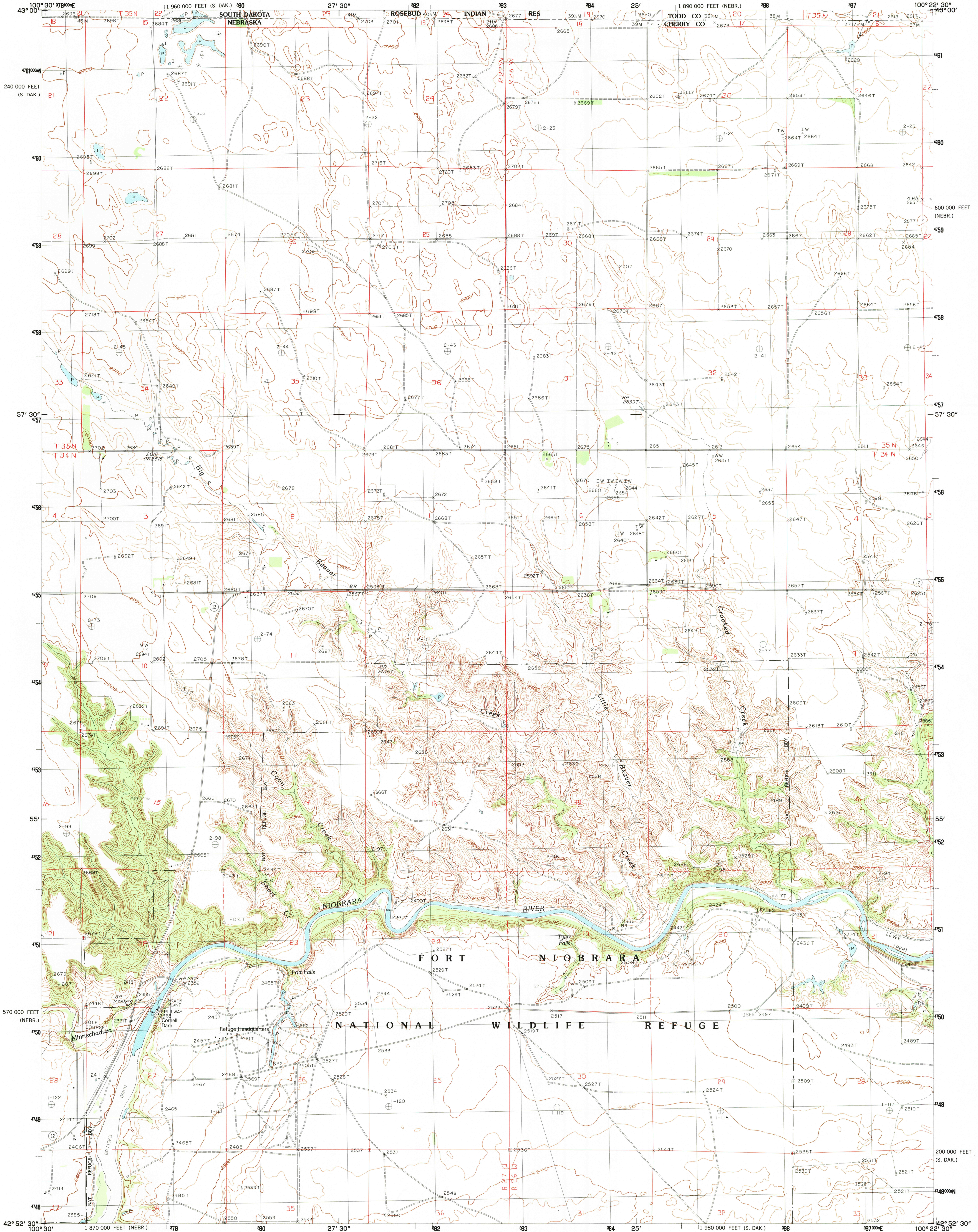


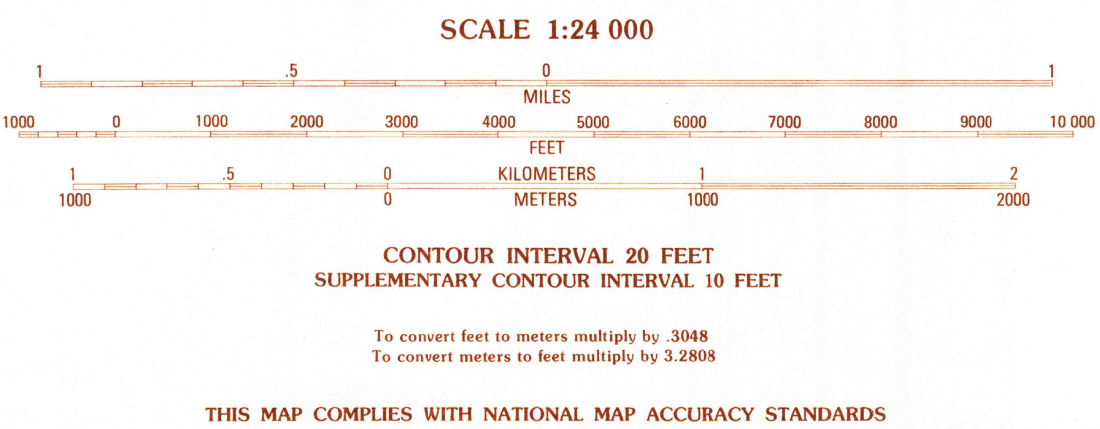
UNITED STATES  
DEPARTMENT OF THE INTERIOR  
GEOLOGICAL SURVEY

CORNELL DAM QUADRANGLE  
NEBRASKA-SOUTH DAKOTA  
7.5 MINUTE SERIES (TOPOGRAPHIC)



PRODUCED BY THE UNITED STATES GEOLOGICAL SURVEY  
CONTROL BY USGS AND NOS/NOAA  
COMPILED FROM AERIAL PHOTOGRAPHS TAKEN 1977  
FIELD CHECKED 1980. MAP EDITED 1988  
PROJECTION LAMBERT CONFORMAL CONIC  
GRID: 1000-METER UNIVERSAL TRANSVERSE MERCATOR ZONE 14  
10,000-FOOT STATE GRID TICKS NEBRASKA, NORTH ZONE  
AND SOUTH DAKOTA, SOUTH ZONE  
UTM GRID DECLINATION 09° WEST  
1983 MAGNETIC NORTH DECLINATION 9°30' EAST  
VERTICAL DATUM NATIONAL GEODETIC VERTICAL DATUM OF 1929  
HORIZONTAL DATUM 1927 NORTH AMERICAN DATUM  
To place on the predicted North American Datum of 1983,  
move the projection lines as shown by dashed corner ticks  
(6 meters north and 35 meters east)  
There may be private inholdings within the boundaries of any  
Federal and State reservations shown on this map

**PROVISIONAL MAP**  
Produced from original  
manuscript drawings. Informa-  
tion shown as of date of  
field check.



THIS MAP COMPLIES WITH NATIONAL MAP ACCURACY STANDARDS  
FOR SALE BY U.S. GEOLOGICAL SURVEY, DENVER, COLORADO 80225, OR RESTON, VIRGINIA 22092

CORNELL DAM, NEBR.-S. DAK.  
PROVISIONAL EDITION 1983  
42100-H4-TF-024

RETURN TO:  
USGS NHD HISTORICAL MAP ARCHIVES