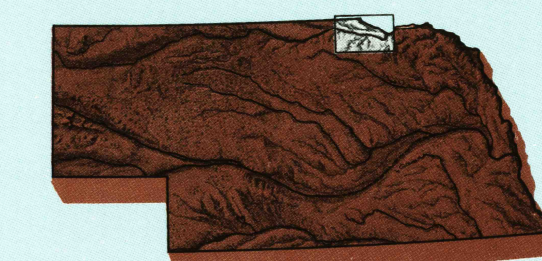


ATKINSON, NEBRASKA-SOUTH DAKOTA

30 X 60 MINUTE SERIES (PLANIMETRIC)

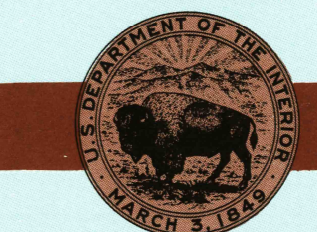
Atkinson NEBRASKA-SOUTH DAKOTA

1:100 000-scale planimetric map



30 X 60 MINUTE QUADRANGLE SHOWING

- Elevations in meters
- Highways, roads and other manmade structures
- Water features
- Woodland areas
- Geographic names



GEOLOGICAL SURVEY

1986

Produced by the United States Geological Survey

Compiled from USGS 1:24 000-scale topographic maps dated 1950-1978. Planimetry revised from aerial photographs taken 1984 and other source data. Revised information not field checked. Map edited 1986.

Projection and 10 000-meter grid, zone 14 Universal Transverse Mercator. 25 000-foot grid ticks based on Nebraska coordinate system, north zone and South Dakota coordinate system, south zone. 1927 North American Datum. To place on the predicted North American Datum 1983 move the projection lines 6 meters north and 30 meters east. There may be private inholdings within the boundaries of the National or State reservations shown on this map.

NATIONAL GEODETIC VERTICAL DATUM OF 1929 ELEVATIONS SHOWN TO THE NEAREST METER

THIS MAP COMPLIES WITH NATIONAL MAP ACCURACY STANDARDS

| CONVERSION TABLE | | DECLINATION DIAGRAM | | ADJOINING MAPS | | |
|------------------|---------|----------------------|--|----------------|---|---|
| Meters | Feet | Magnetic Declination | | 1 | 2 | 3 |
| 1 | 3.2808 | 0° 00' | | 4 | 5 | 6 |
| 2 | 6.5617 | 0° 15' | | 7 | 8 | |
| 3 | 9.8425 | 0° 30' | | | | |
| 4 | 13.1234 | 0° 45' | | | | |
| 5 | 16.4042 | 1° 00' | | | | |
| 6 | 19.6850 | 1° 15' | | | | |
| 7 | 22.9659 | 1° 30' | | | | |
| 8 | 26.2467 | 1° 45' | | | | |
| 9 | 29.5275 | 2° 00' | | | | |
| 10 | 32.8084 | 2° 15' | | | | |

To convert meters to feet multiply by 3.2808
To convert feet to meters multiply by 0.3048

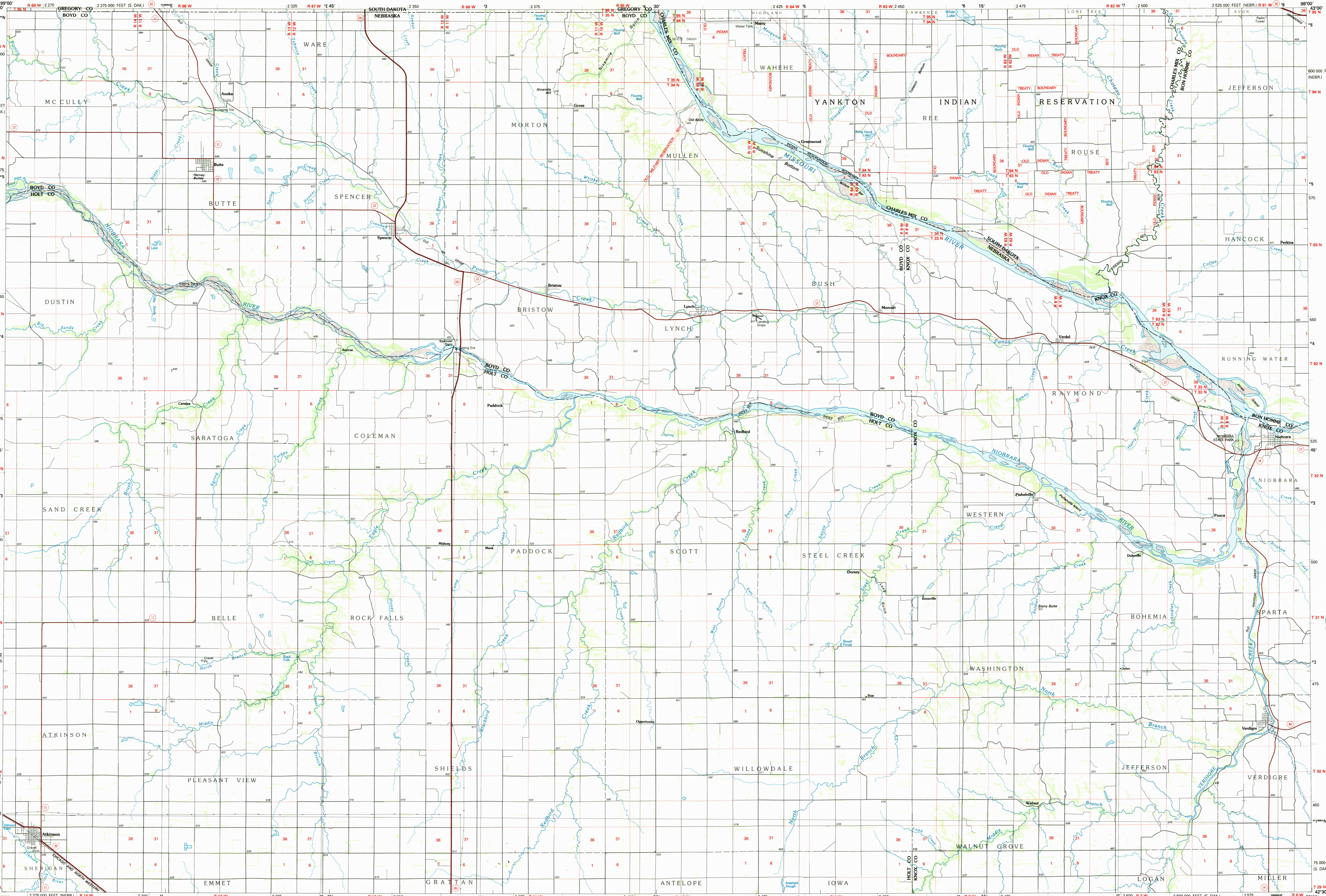
UTM grid convergence (IGN and 1983 magnetic declination (MWD) at center of map. Diagram is approximate.

| | |
|---|------------|
| 1 | Western |
| 2 | Lake Andes |
| 3 | Fremont |
| 4 | Albion |
| 5 | Yankton |
| 6 | Rose |
| 7 | O'Neill |
| 8 | Norfolk |

FOR SALE BY U.S. GEOLOGICAL SURVEY, DENVER, COLORADO 80225 OR RESTON, VIRGINIA 22092

USGS NMD HISTORICAL MAP
AUG 12 1986
REC'D FILE COPY
Topographic Map Symbols

- Primary highway, hard surface
- Secondary highway, hard surface
- Light duty road, principal street, hard or improved surface
- Other road or street, mail
- Route marker: Interstate; U. S. State
- Railroad: standard gage; narrow gage
- Bridge: overpass; underpass
- Tunnel: road; railroad
- Built up area: locality, elevation
- Airport: landing field; landing strip
- National boundary
- State boundary
- County boundary
- National or State reservation boundary
- Land grant boundary
- U. S. public lands survey: range, township, section
- Range, township, section line, protected
- Power transmission line: pipeline
- Dam; dam with lock
- Cemetery: building
- Windmill; water well; spring
- Mine shaft; pit or cave; mine, quarry, gravel pit
- Campground; picnic area; U. S. location monument
- Ruins: cliff dwelling
- Distorted surface: strip mine, lava, sand
- Contours: index; intermediate; supplementary
- Bathymetric contours: index; intermediate
- Stream, lake: perennial; intermittent
- Rubble, large and small; baffle, large and small
- Area to be submerged; marsh, swamp
- Land subject to controlled inundation; woodland
- Scrub; mangrove
- Orchard; vineyard



ATKINSON, NEBRASKA-SOUTH DAKOTA 42098-E1-PL-100

SCALE 1:100 000

1 CENTIMETER ON THE MAP REPRESENTS 1 KILOMETER ON THE GROUND

75 000 FEET (NEBR.)

75 000 FEET (S. DAK.)

42 30' N

42 30' N

98 00' W

98 00' W