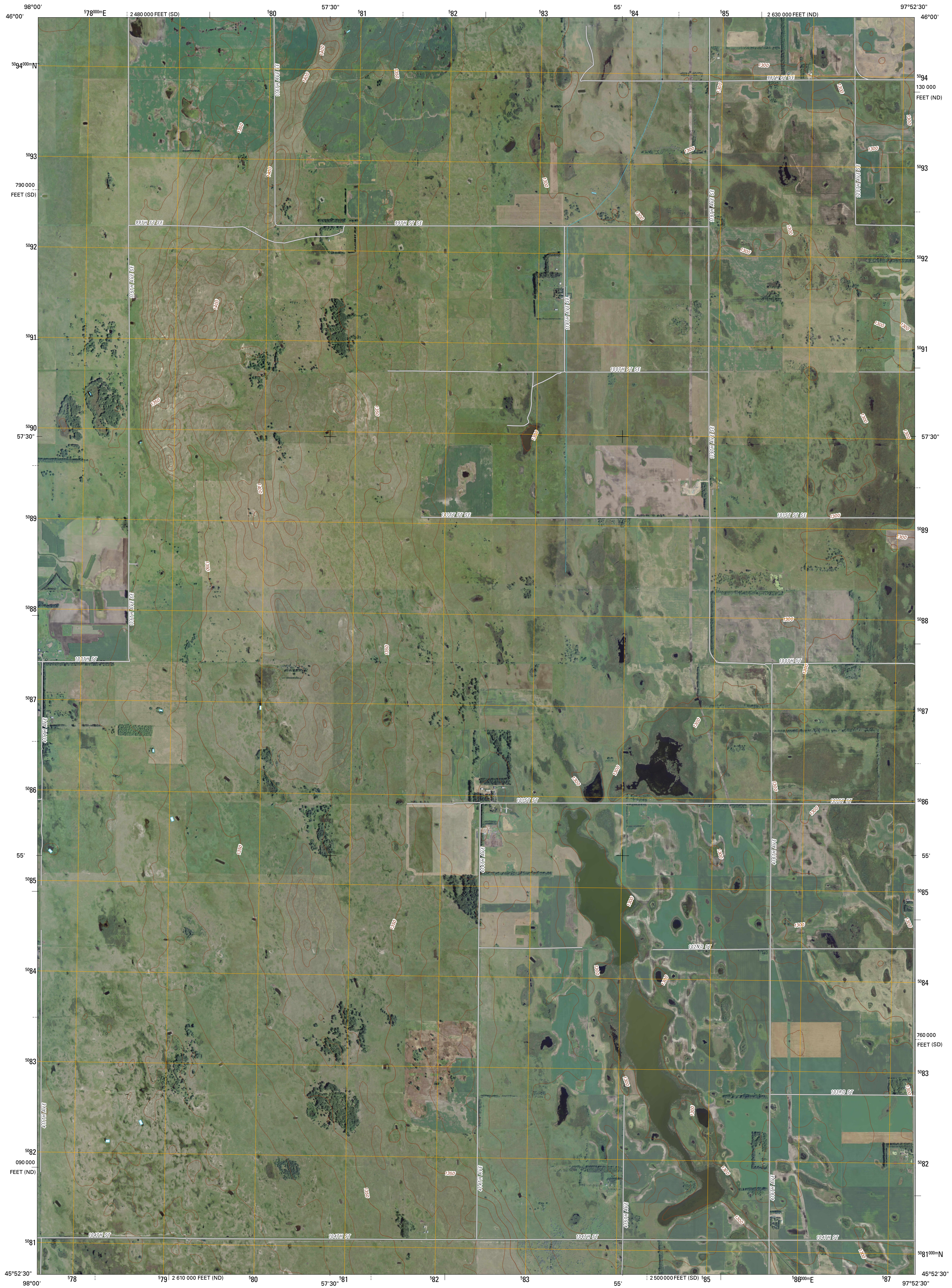




U.S. DEPARTMENT OF THE INTERIOR
U. S. GEOLOGICAL SURVEY

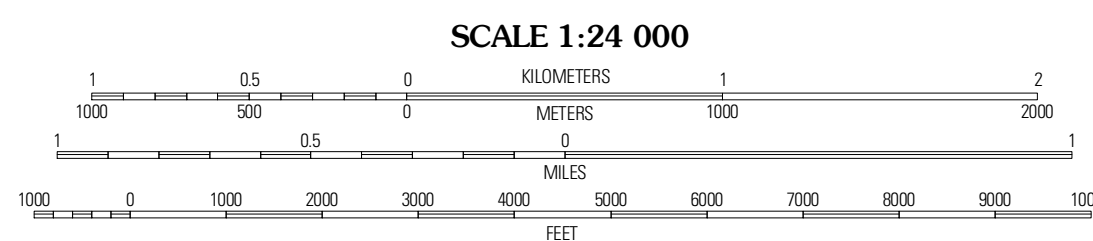
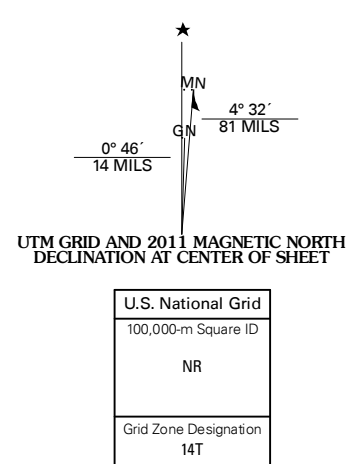


NEWARK NW QUADRANGLE
NORTH DAKOTA-SOUTH DAKOTA
7.5-MINUTE SERIES

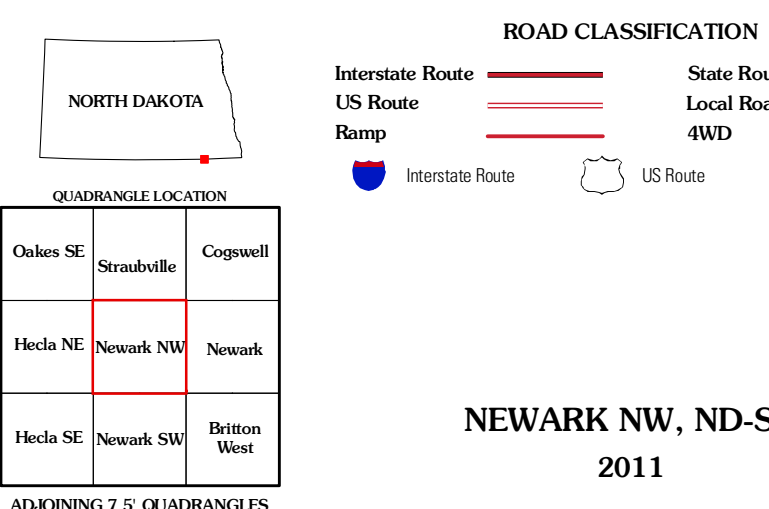


Produced by the United States Geological Survey
North American Datum of 1983 (NAD83)
World Geodetic System of 1984 (WGS84). Projection and
10 000-foot ticks: North Dakota Coordinate System of 1983
(south zone) and South Dakota Coordinate System of 1983
(north zone)

Imagery.....NAP, August 2009
Roads.....©2006-2010 Tele Atlas
Names.....GNIS, 2009
Hydrography.....National Hydrography Dataset, 2009
Contours.....National Elevation Dataset, 1999



CONTOUR INTERVAL 10 FEET
NORTH AMERICAN VERTICAL DATUM OF 1988
This map was produced to conform with version 0.5.10 of the
draft USGS Standards for 7.5-Minute Quadrangle Maps.
A metadata file associated with this product is draft version 0.5.11



NEWARK NW, ND-SD
2011