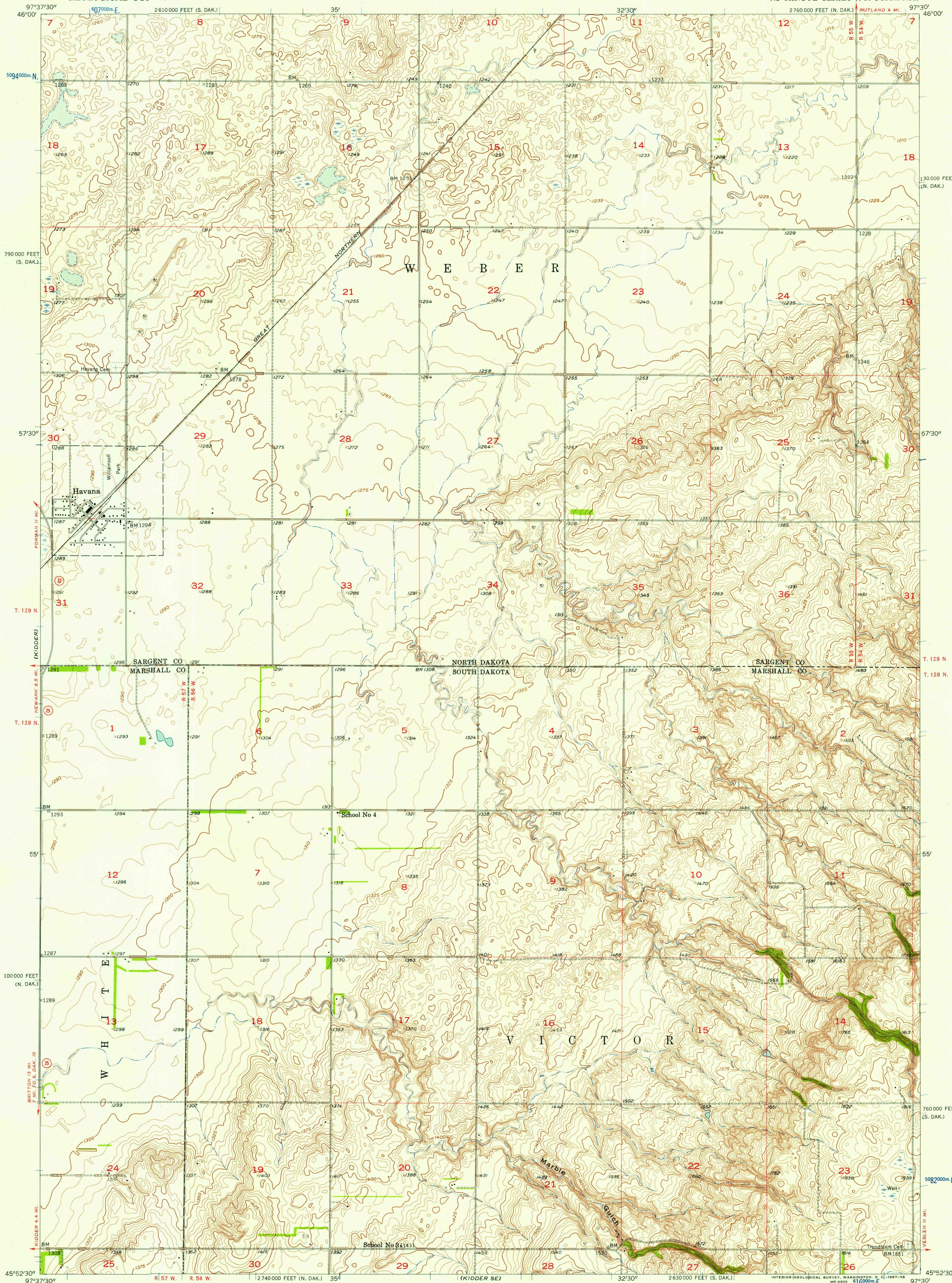


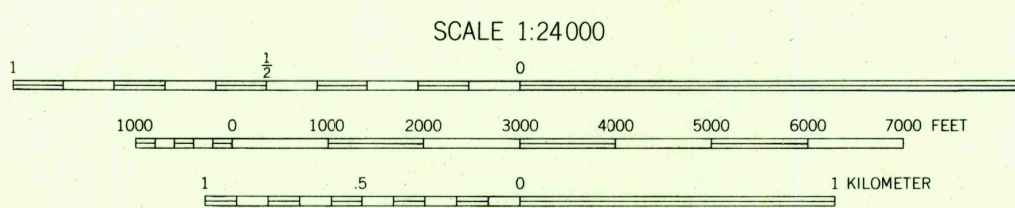
WYOMING 1:125,000



U.S.G.S.
FILE COPY
TOPOGRAPHIC DIVISION

Mapped, edited, and published by the Geological Survey as part of the Department of the Interior program for the development of the Missouri River Basin Control by USGS and USC&GS. Culture and drainage in part compiled from aerial photographs taken 1951. Topography by planetable surveys 1953 and 1956. Polyconic projection. 1927 North American datum 10,000-foot grids based on North Dakota datum system, south zone, and South Dakota coordinate system, north zone 1000-meter Universal Transverse Mercator grid ticks, zone 14, shown in blue.

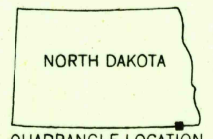
APPROXIMATE MEAN
DECLINATION, 1956



CONTOUR INTERVAL 5 FEET
DATUM IS MEAN SEA LEVEL

USGS
HISTORICAL FILE
TOPOGRAPHIC DIVISION

ROAD CLASSIFICATION
Light-duty ———— Unimproved dirt - - - - -
○ State Route



HAVANA, N. DAK.—S. DAK.
N4552.5—W9730/7.5

THIS MAP COMPLIES WITH NATIONAL MAP ACCURACY STANDARDS
FOR SALE BY U. S. GEOLOGICAL SURVEY, DENVER 2, COLORADO OR WASHINGTON 25, D. C.
AND BY THE STATE WATER CONSERVATION COMMISSION, BISMARCK, NORTH DAKOTA
A FOLDER DESCRIBING TOPOGRAPHIC MAPS AND SYMBOLS IS AVAILABLE ON REQUEST

1956

U.S.G.S.
FILE COPY
TOPOGRAPHIC DIVISION

OCT - 2 1957

2040