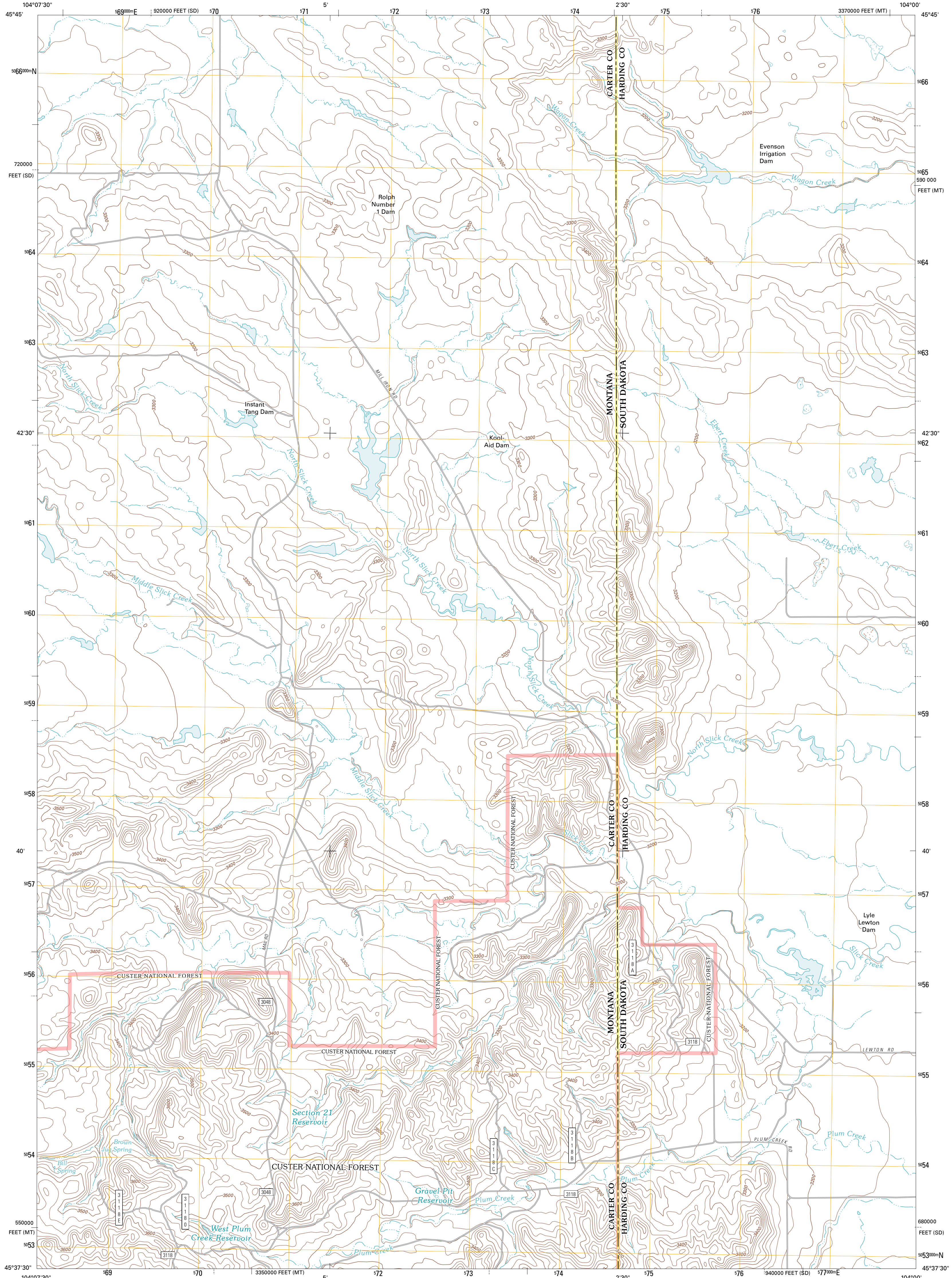




U.S. DEPARTMENT OF THE INTERIOR
U. S. GEOLOGICAL SURVEY

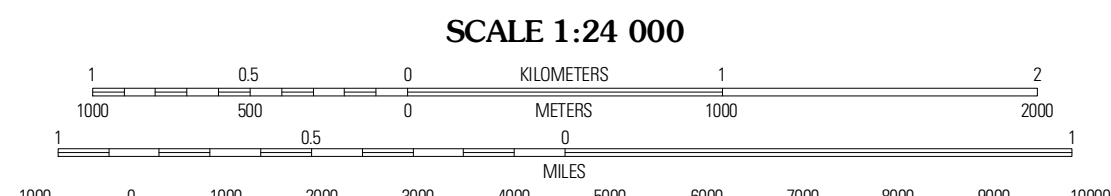
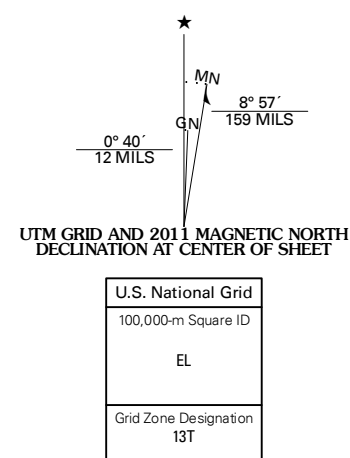


NORTH SLICK CREEK QUADRANGLE
MONTANA-SOUTH DAKOTA
7.5-MINUTE SERIES

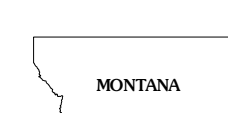


Produced by the United States Geological Survey
North American Datum of 1983 (NAD83)
World Geodetic System of 1984 (WGS84). Projection and
1 000-meter grid: Universal Transverse Mercator, Zone 13T
10 000-foot ticks: Montana Coordinate System of 1983,
South Dakota Coordinate System of 1983 (north zone)

Imagery: NAD, July 2009
Roads: 2006-2010 Tele Atlas
Roads within US Forest Service Lands: FSTopo Data
with limited Forest Service updates, 2009
Names: GNIS, 2010
Hydrography: National Hydrography Dataset, 2009
Contours: National Elevation Dataset, 2003
Boundaries: Census, IBWC, IBC, USGS, 1972 - 2010



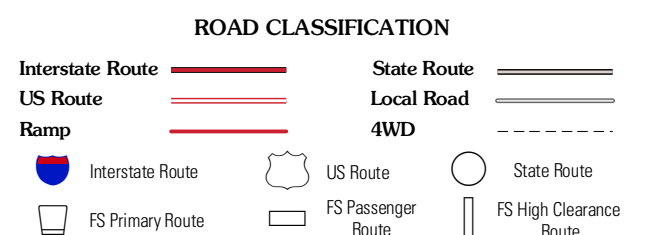
CONTOUR INTERVAL 20 FEET
NORTH AMERICAN VERTICAL DATUM OF 1988
This map was produced to conform with version 0.5.10
of the USGS US Topo Product Standard.
A metadata file associated with this product is draft version 0.5.16



QUADRANGLE LOCATION

Mill Iron	Humbolt Hills	Scott Creek
Rustler Divide	North Slick Creek	Caroline Butte
Timber Hill	Capitol Rock	Camp Crook

ADJOINING 7.5' QUADRANGLES



Check with local Forest Service unit
for current travel conditions and restrictions.

NORTH SLICK CREEK, MT-SD
2011