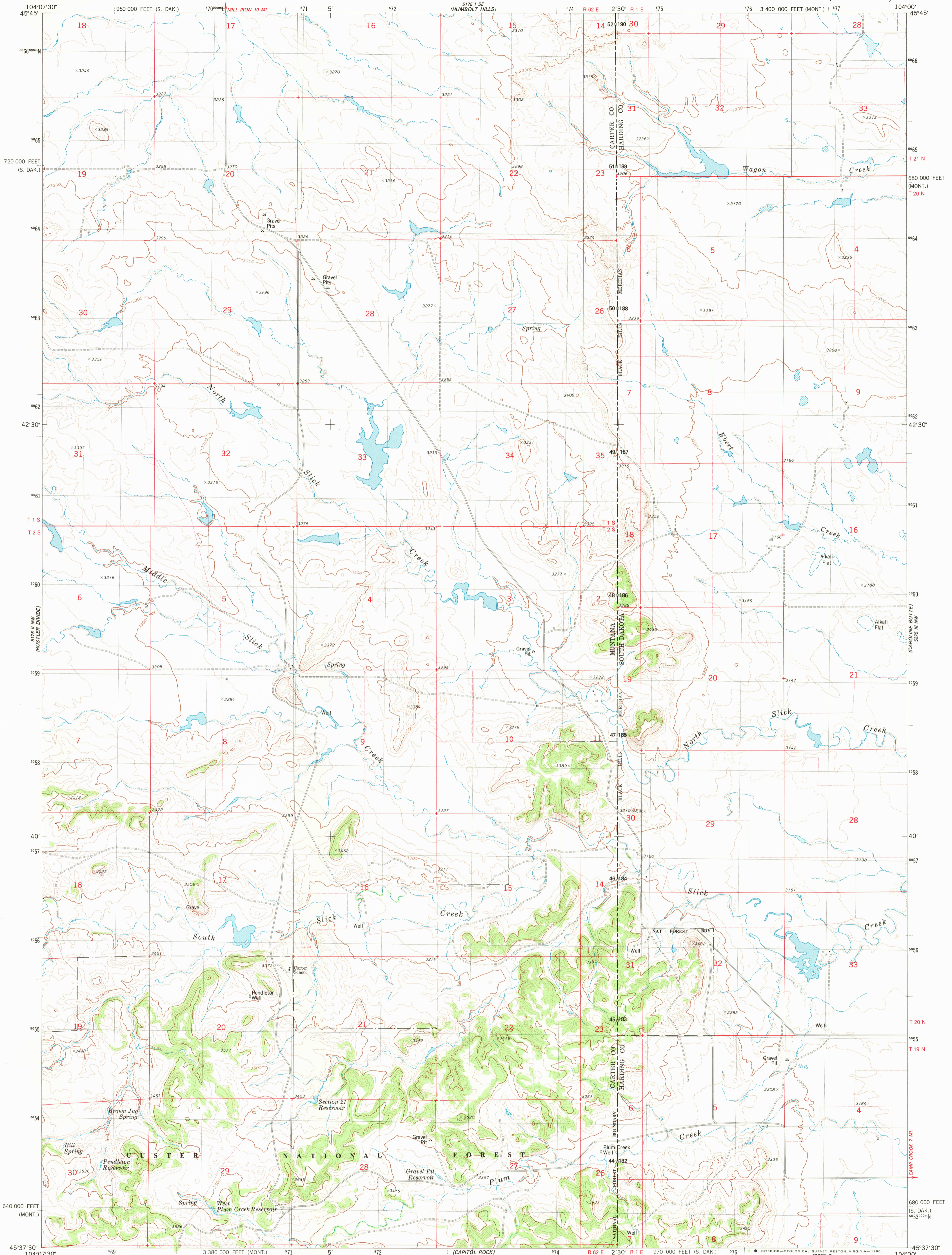


UNITED STATES
DEPARTMENT OF THE INTERIOR
GEOLOGICAL SURVEY

NORTH SLICK CREEK QUADRANGLE
MONTANA-SOUTH DAKOTA
7.5 MINUTE SERIES (TOPOGRAPHIC)



Mapped, edited, and published by the Geological Survey

Control by USGS, NOS/NOAA, and U.S. Forest Service

Topography by photogrammetric methods from aerial photographs taken 1972. Field checked 1974. Map edited 1980

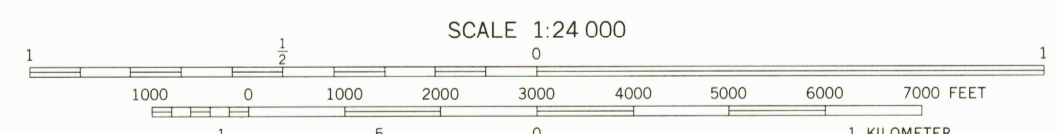
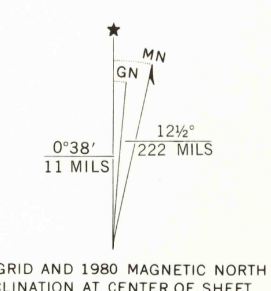
Projection: Montana coordinate system, south zone (Lambert conformal conic)

10,000-foot grid ticks based on Montana coordinate system, south zone and South Dakota coordinate system, north zone 1000-meter Universal Transverse Mercator grid, zone 13 1927 North American datum

To place on the predicted North American Datum 1983 move the projection lines 4 meters north and 39 meters east as shown by dashed corner ticks

Fine red dashed lines indicate selected fence lines

There may be private inholdings within the boundaries of the National or State Reservations shown on this map



CONTOUR INTERVAL 20 FEET
DOTTED LINES REPRESENT 10-FOOT CONTOURS
NATIONAL GEODETIC VERTICAL DATUM OF 1929



ROAD CLASSIFICATION

Primary highway, hard surface	Light-duty road, hard or improved surface
Secondary highway, hard surface	Unimproved road
Interstate Route	U.S. Route
	State Route

NORTH SLICK CREEK, MONT.-S. DAK.
USGS N4537.5-W10400.7.5

USGS
Historical File
Topographic Division
1980
DMA 5175 II NE--SERIES V894

OCT 23 1980

1900