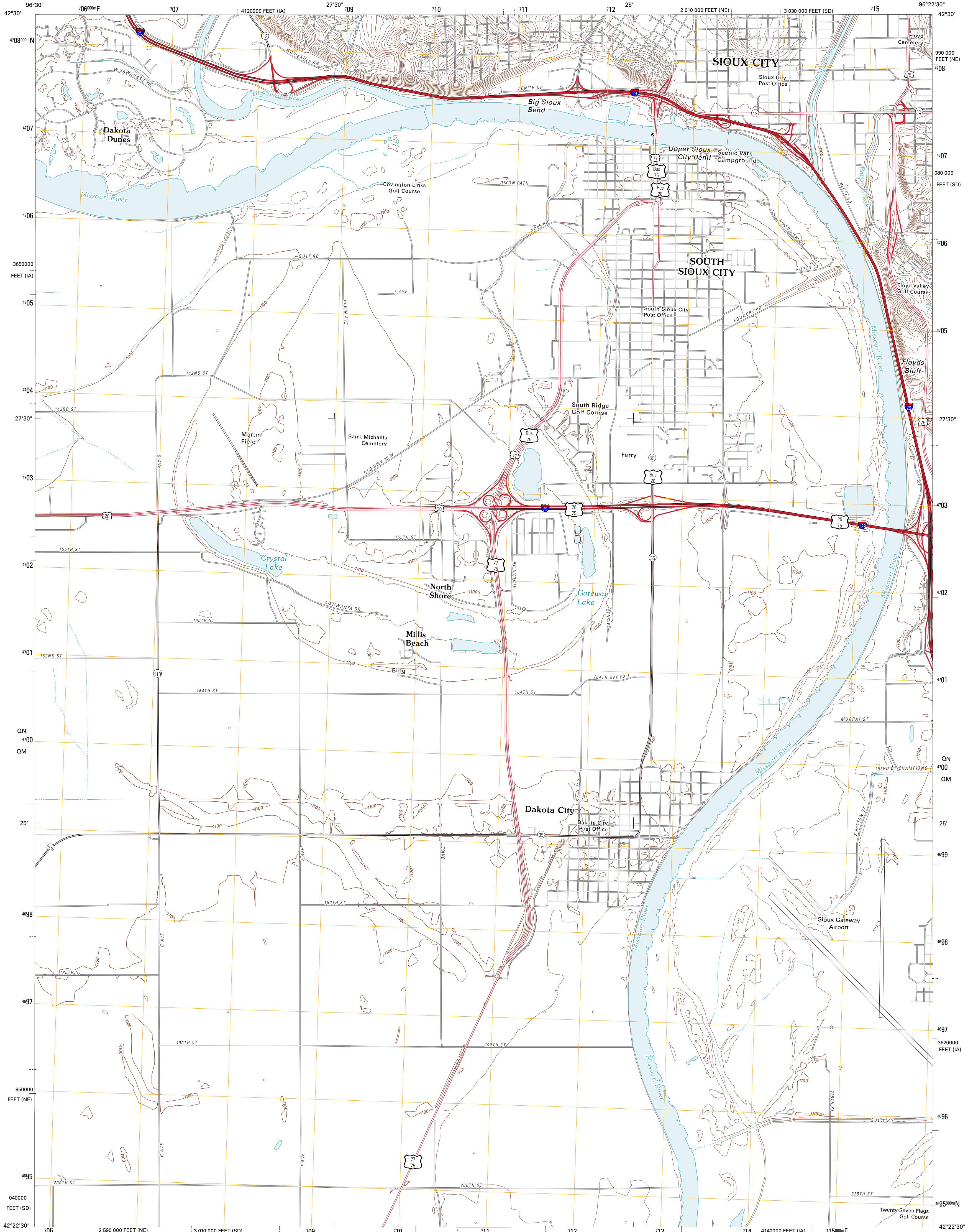




U.S. DEPARTMENT OF THE INTERIOR
U. S. GEOLOGICAL SURVEY

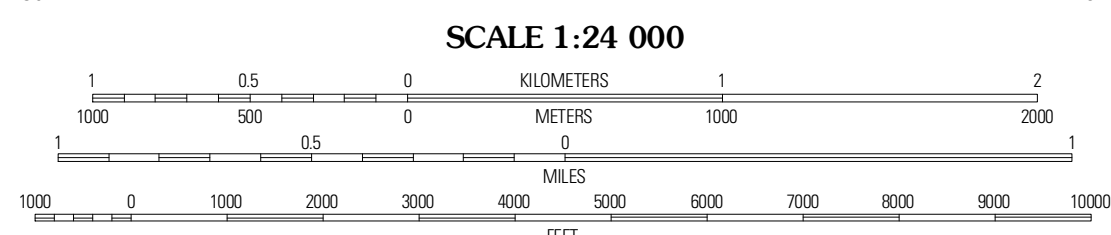
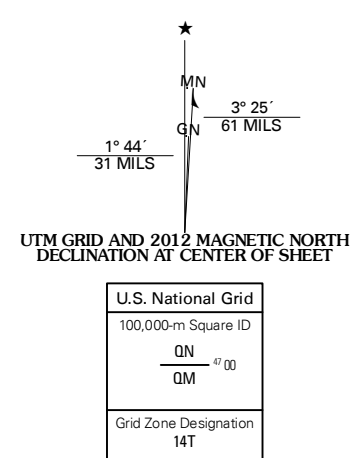


SIOUX CITY SOUTH QUADRANGLE
IOWA-NEBRASKA-SOUTH DAKOTA
7.5-MINUTE SERIES

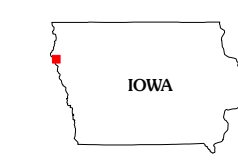


Produced by the United States Geological Survey
North American Datum of 1983 (NAD83)
World Geodetic System of 1984 (WGS84). Projection and
1 000-meter grid: Universal Transverse Mercator, Zone 14T
10 000-foot ticks: Nebraska Coordinate System of 1983,
Iowa Coordinate System of 1983 (north zone), South Dakota
Coordinate System of 1983 (south zone)

Imagery: NAIP, June 2009
Roads: ©2006-2010 Tele Atlas
Names: ©2010
Hydrography: National Hydrography Dataset, 2010
Contours: National Elevation Dataset, 1999



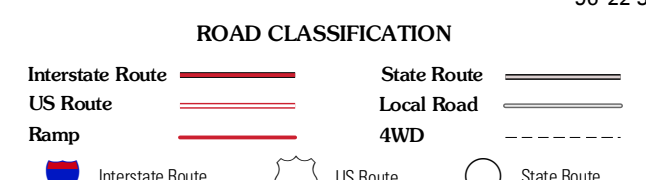
CONTOUR INTERVAL 10 FEET
NORTH AMERICAN VERTICAL DATUM OF 1988
This map was produced to conform with version 0.5.10 of the
draft USGS Standards for 7.5-Minute Quadrangle Maps.
A metadata file associated with this product is draft version 0.5.11



QUADRANGLE LOCATION

Jefferson	Sioux City North	James
Jackson	Sioux City South	Sergeant Bluff
Emerson SE	Homer	Salix

ADJOINING 7.5 QUADRANGLES



SIOUX CITY SOUTH, IA-NE-SD
2012