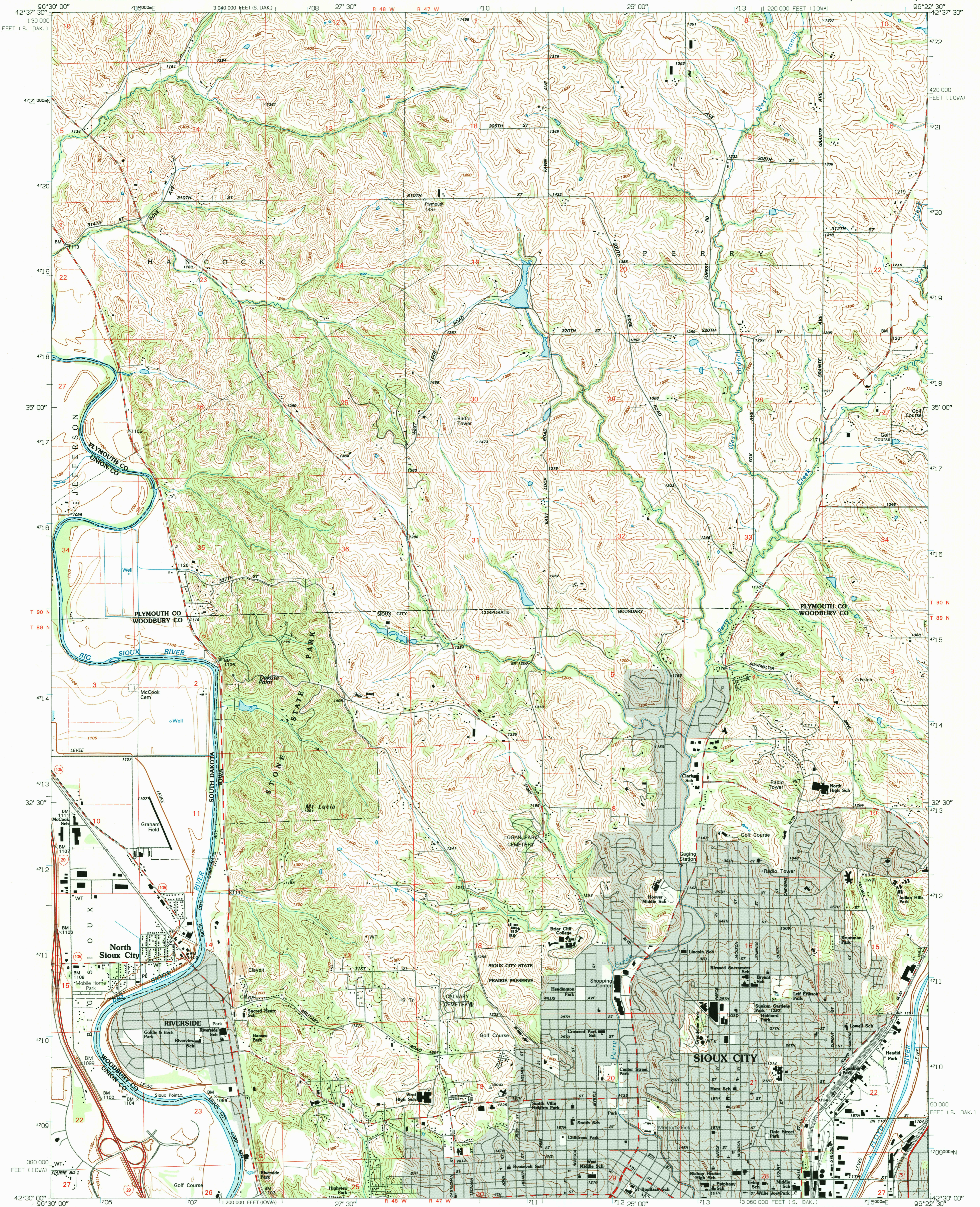
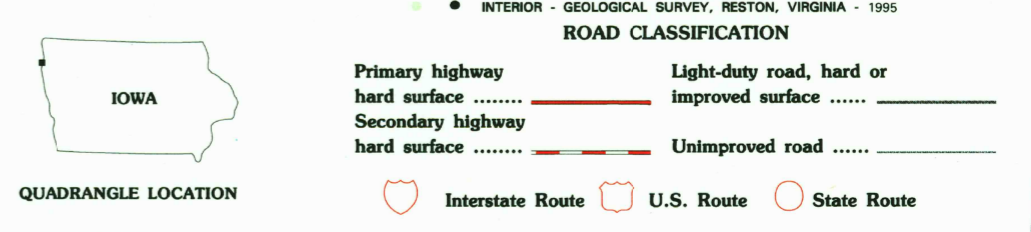
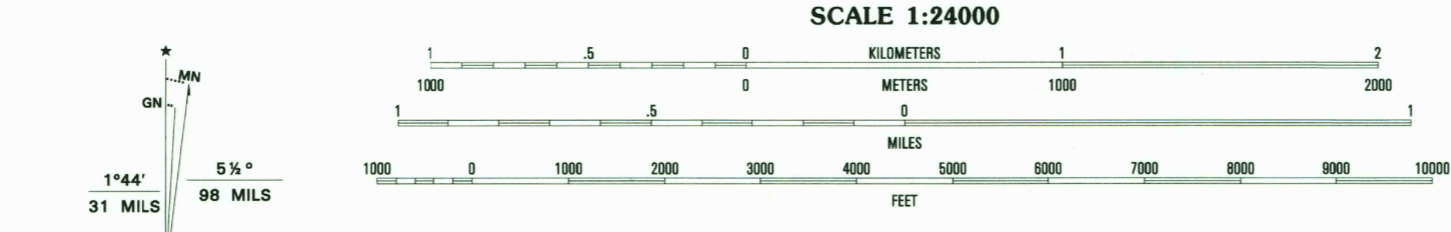


UNITED STATES
DEPARTMENT OF THE INTERIOR
GEOLOGICAL SURVEY

SIoux CITY NORTH QUADRANGLE
IOWA-SOUTH DAKOTA
7.5 MINUTE SERIES (TOPOGRAPHIC)



Produced by the United States Geological Survey
Control by USGS and NOS/NOAA
Topography by photogrammetric methods from aerial photographs taken 1961 and planimetric surveys 1965. Revised from aerial photographs taken 1990-91. Field checked 1993. Map edited 1994
North American Datum of 1927 (NAD 27). Projection and blue 1000-meter ticks: Iowa coordinate system, north zone and South Dakota coordinate system, south zone
North American Datum of 1983 (NAD 83) is shown by dashed corner ticks. The values of the shift between NAD 27 and NAD 83 for 7.5-minute intersections are obtainable from National Geodetic Survey NADCON software
There may be private inholdings within the boundaries of the National or State reservations shown on this map
Gray tint indicates areas in which only landmark buildings are shown
Fine red dashed lines indicate selected fence and field lines where generally visible on aerial photographs. This information is unchecked



1	2	3	1 Elk Point NE
			2 Millerville
			3 Hinton
4			4 Jefferson
	5		5 James
			6 Jackson
			7 Sioux City South
6	7	8	8 Sergeant Bluff

SIoux CITY NORTH, IOWA-S. DAK.
42096-E4-TF-024
1994
DMA 6769 III SW-SERIES V876

THIS MAP COMPLIES WITH NATIONAL MAP ACCURACY STANDARDS
FOR SALE BY U.S. GEOLOGICAL SURVEY, DENVER, COLORADO 80225, OR RESTON, VIRGINIA 22092
AND IOWA GEOLOGICAL SURVEY, IOWA CITY, IOWA 52240
A FOLDER DESCRIBING TOPOGRAPHIC MAPS AND SYMBOLS IS AVAILABLE ON REQUEST

USGS AND HISTORIC MAP ARCHIVES
JUN 19 1994
REC'D FILE C