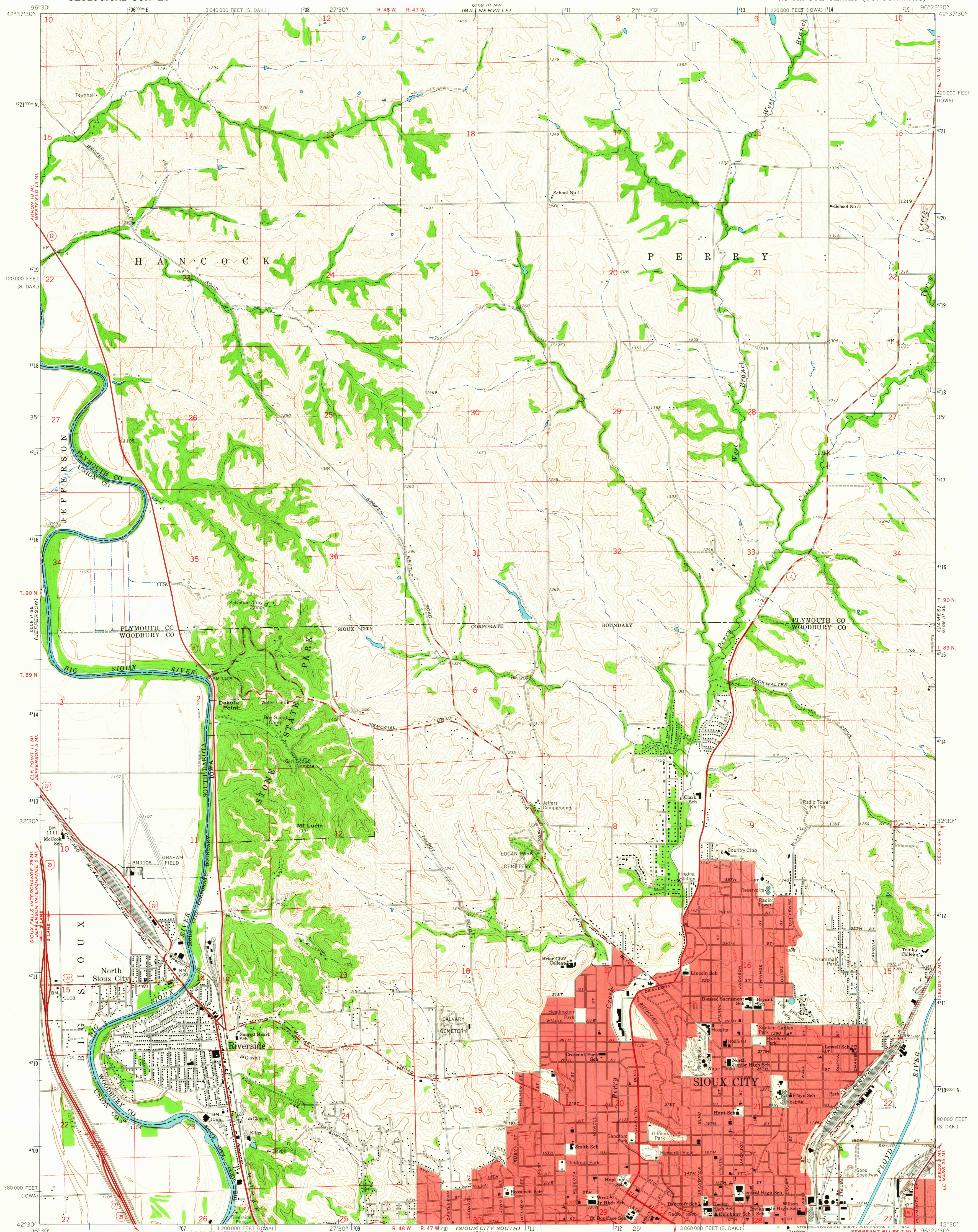


UNITED STATES  
DEPARTMENT OF THE INTERIOR  
GEOLOGICAL SURVEY

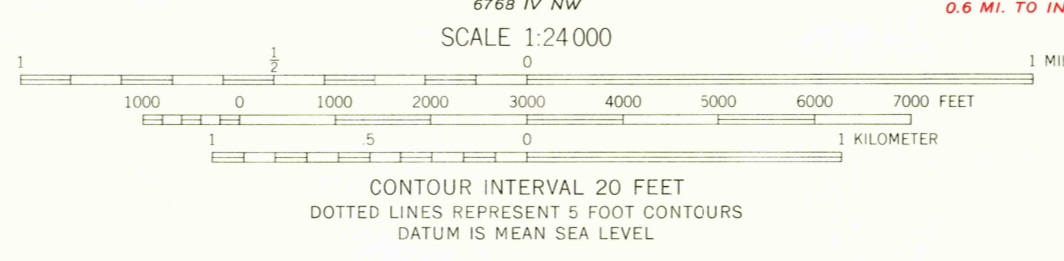
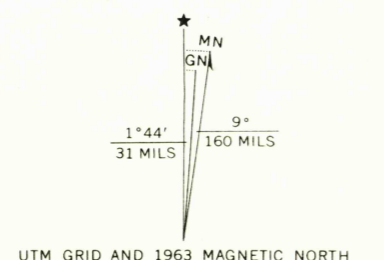
SIoux CITY NORTH QUADRANGLE  
IOWA—SOUTH DAKOTA  
7.5 MINUTE SERIES (TOPOGRAPHIC)



Mapped, edited, and published by the Geological Survey

Control by USGS and USC&GS  
Topography by photogrammetric methods from aerial photographs taken 1961 and planetable surveys 1963  
Polyconic projection. 1927 North American datum  
10,000-foot grids based on Iowa coordinate system, north zone and South Dakota coordinate system, south zone  
1000-meter Universal Transverse Mercator grid ticks, zone 14, shown in blue

Red tint indicates areas in which only landmark buildings are shown  
Fine red dashed lines indicate selected fence and field lines where generally visible on aerial photographs. This information is unchecked



USGS  
Historical File  
Topographic Division

ROAD CLASSIFICATION

|                  |                 |
|------------------|-----------------|
| Heavy-duty       | Light-duty      |
| Medium-duty      | Unimproved dirt |
| Interstate Route | U.S. Route      |
|                  | State Route     |

THIS MAP COMPLIES WITH NATIONAL MAP ACCURACY STANDARDS  
FOR SALE BY U. S. GEOLOGICAL SURVEY, DENVER 25, COLORADO OR WASHINGTON 25, D. C.  
AND BY THE IOWA GEOLOGICAL SURVEY, IOWA CITY, IOWA  
A FOLDER DESCRIBING TOPOGRAPHIC MAPS AND SYMBOLS IS AVAILABLE ON REQUEST



SIoux CITY NORTH, IOWA—S. DAK.  
N4230—W9622.5/7.5

1963  
AMS 6769 III SW—SERIES V876

DEC 16 1964  
U.S.G.S.

FILE COPY  
TOPOGRAPHIC DIVISION

3060