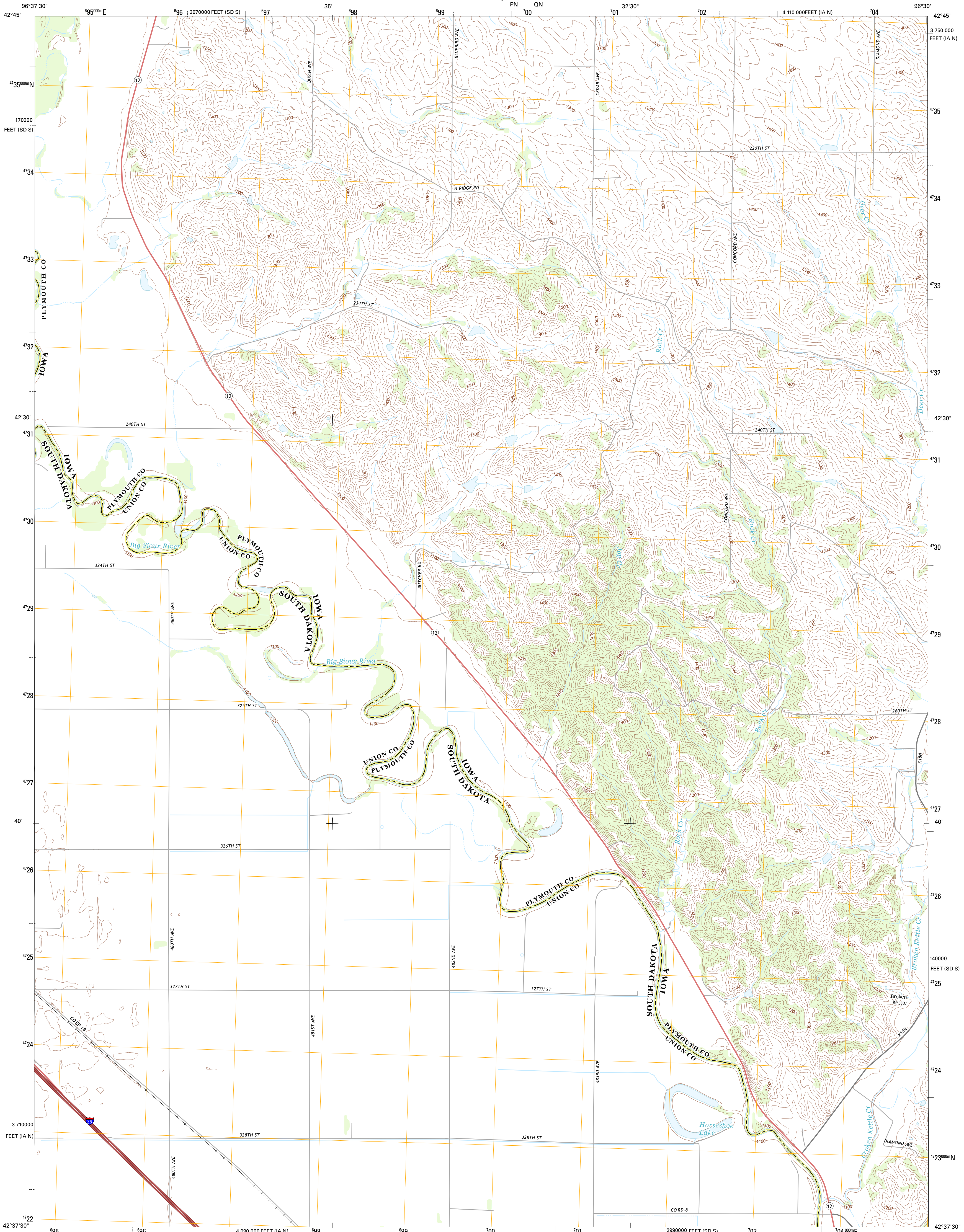




U.S. DEPARTMENT OF THE INTERIOR
U. S. GEOLOGICAL SURVEY

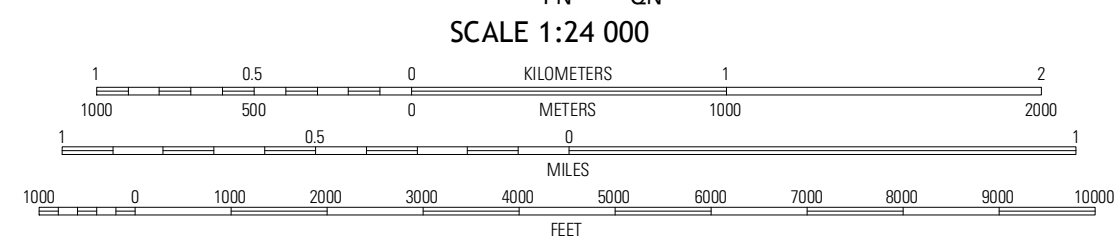
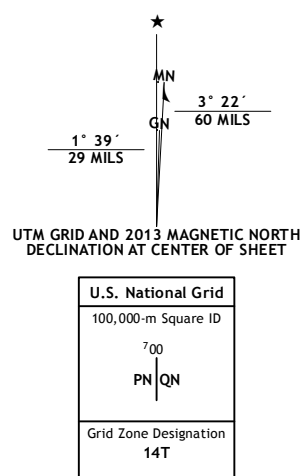


ELK POINT NE QUADRANGLE
IOWA-SOUTH DAKOTA
7.5-MINUTE SERIES



Produced by the United States Geological Survey
North American Datum of 1983 (NAD83)
World Geodetic System of 1984 (WGS84). Projection and
1000-meter grid: Universal Transverse Mercator, Zone 14T
10 000-foot ticks: Iowa Coordinate System of 1983 (north zone),
South Dakota Coordinate System of 1983 (south zone)

Imagery.....N.A.I.P., August 2011
Roads.....©2006-2012 TomTom
Names.....GNIS, 2012
Hydrography.....National Hydrography Dataset, 2011
Contours.....National Elevation Dataset, 2005
Boundaries.....Census, IBWC, USGS, 1972 - 2012

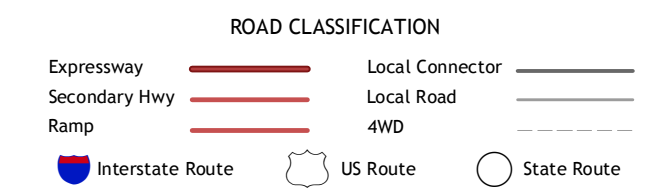


CONTOUR INTERVAL 20 FEET
NORTH AMERICAN VERTICAL DATUM OF 1988

This map was produced to conform with the
National Geospatial Program US Topo Product Standard, 2011.
A metadata file associated with this product is draft version 0.6.11



Richland	Akron	Ireton SW
Elk Point	Elk Point NE	Millerville
Ponca	Jefferson	Sioux City North



ELK POINT NE, IA-SD
2013

ADJOINING 7.5 QUADRANGLES