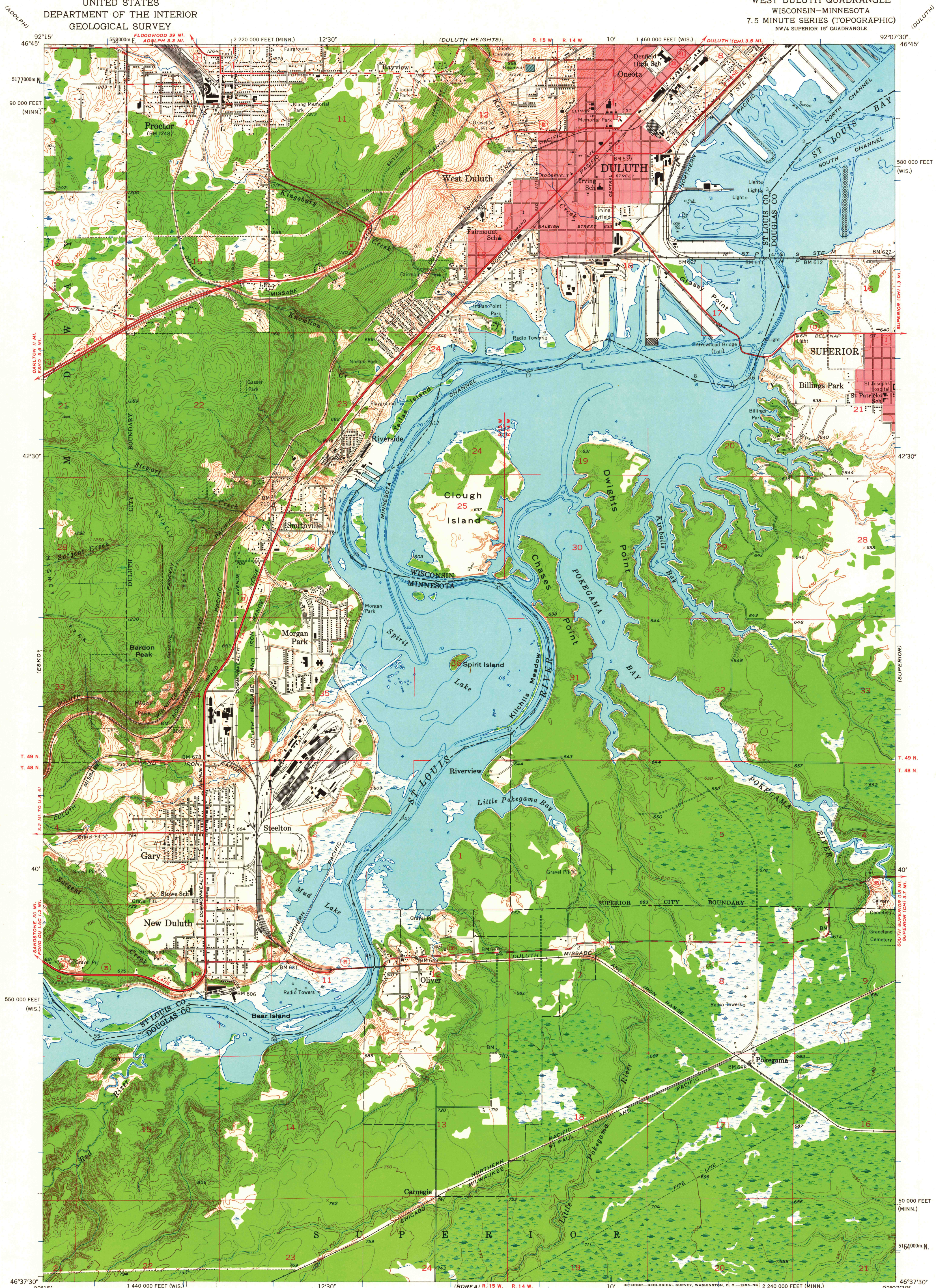


UNITED STATES
DEPARTMENT OF THE INTERIOR
GEOLOGICAL SURVEY

WEST DULUTH QUADRANGLE
WISCONSIN-MINNESOTA
7.5 MINUTE SERIES (TOPOGRAPHIC)
NW/4 SUPERIOR 15' QUADRANGLE



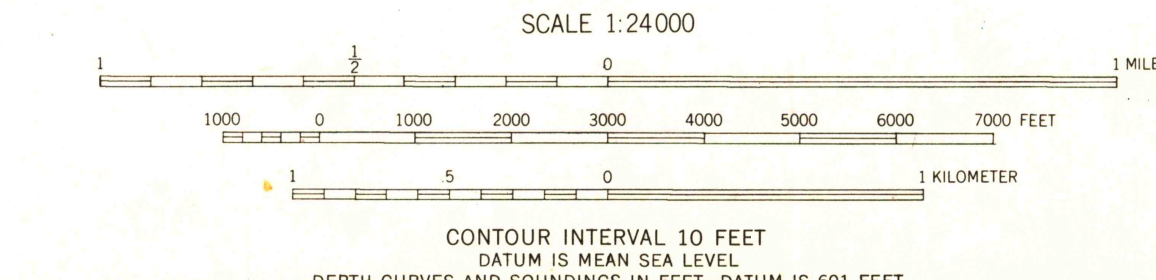
Mapped, edited, and published by the Geological Survey

Control by USGS and USC&GS
Topography from aerial photographs by Kesh plotter
and by plane-table surveys 1954. Aerial photographs taken 1952
Hydrography from U.S. Lake Survey Chart 966 (1:15,000)

Polyconic projection. 1927 North American datum
10,000-foot grids based on Wisconsin coordinate system,
north zone, and Minnesota coordinate system,
north zone

Red tint indicates areas in which only
landmark buildings are shown
1000-meter Universal Transverse Mercator grid ticks,
zone 15, shown in blue

TRUE NORTH
MAGNETIC NORTH
APPROXIMATE MEAN
DECLINATION, 1954



THIS MAP COMPLIES WITH NATIONAL MAP ACCURACY STANDARDS
FOR SALE BY U. S. GEOLOGICAL SURVEY, FEDERAL CENTER, DENVER, COLORADO OR WASHINGTON 25, D. C.
AND BY THE WISCONSIN GEOLOGICAL AND NATURAL HISTORY SURVEY, MADISON 6, WISCONSIN
A FOLDER DESCRIBING TOPOGRAPHIC MAPS AND SYMBOLS IS AVAILABLE ON REQUEST



ROAD CLASSIFICATION
Heavy-duty ——— Light-duty ———
Medium-duty ——— Unimproved dirt - - - - -
U.S. Route ——— State Route ———

WEST DULUTH, WIS.-MINN.
NW/4 SUPERIOR 15' QUADRANGLE
N4637.5-W9207.5/7.5

1954
FILE COPY
TOPOGRAPHIC DIVISION

OCT 24 1953

2675
(no name, 1/14/53)