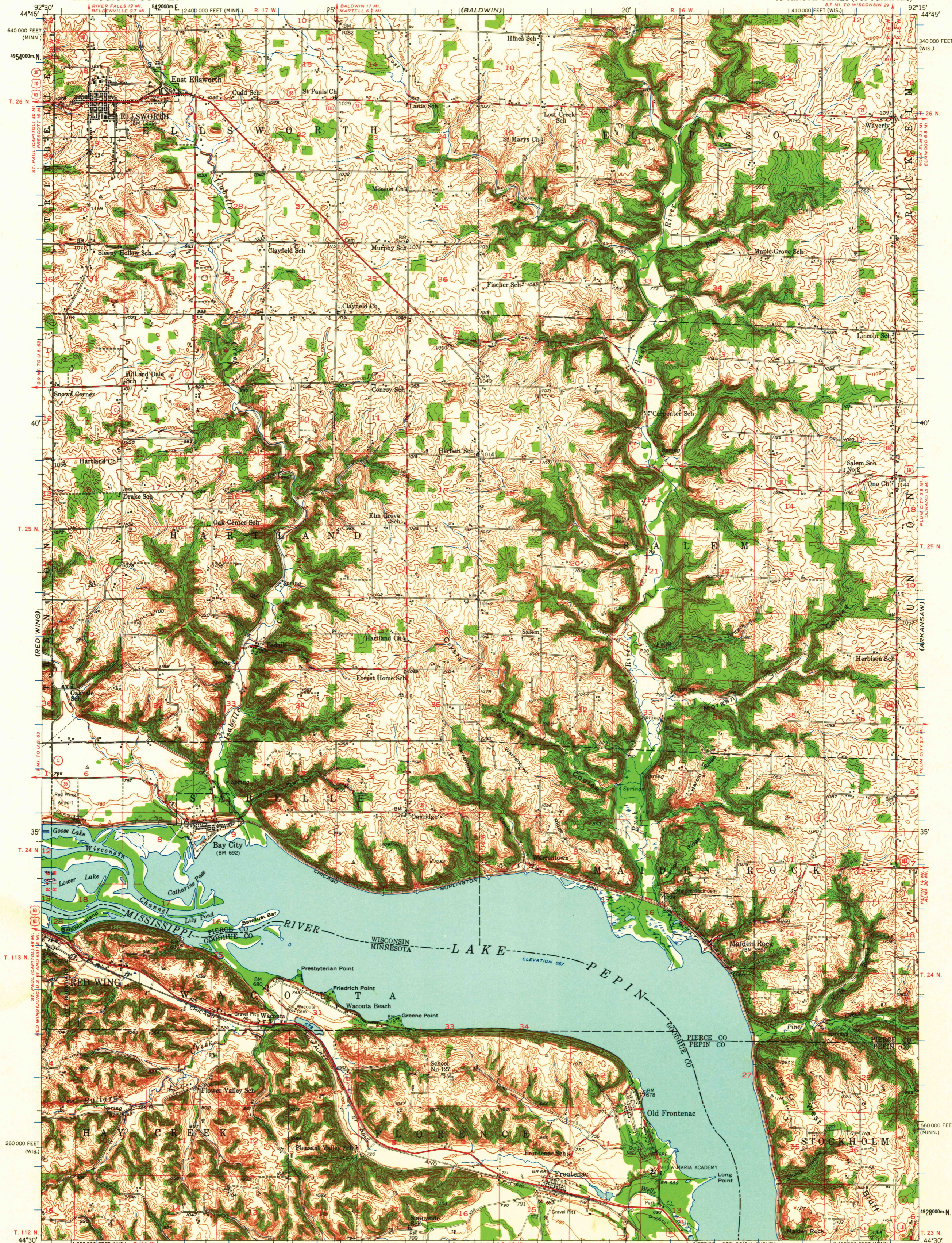
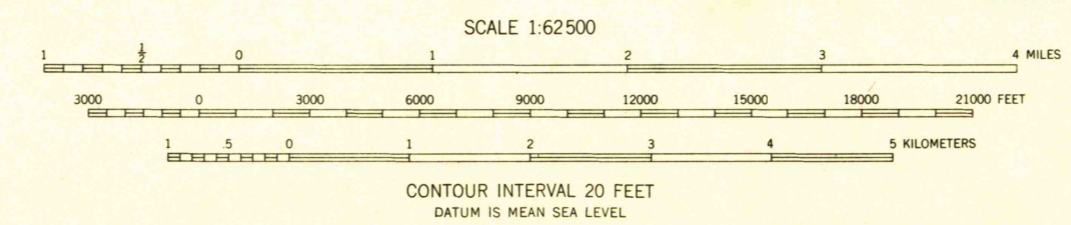


(RIVER FALLS)

(KNAPP)



Mapped, edited, and published by the Geological Survey  
Control by USGS, USC&GS, and USCE  
Topography by multiplex methods from aerial photographs  
taken 1949, and by plane-table surveys 1937-39  
Field check 1950  
Polyconic projection. 1927 North American datum  
10,000-foot grids based on Wisconsin coordinate system,  
central zone, and Minnesota coordinate system,  
south zone  
1000-meter Universal Transverse Mercator grid ticks,  
zone 15, shown in blue  
APPROXIMATE MEAN  
DECLINATION, 1950



ROAD CLASSIFICATION

|             |                 |
|-------------|-----------------|
| Heavy-duty  | Light-duty      |
| Medium-duty | Unimproved dirt |
| U.S. Route  | State Route     |



U.S.G.S. MAIDEN ROCK, WIS.-MINN.  
N4430-W9215/15  
1950

THIS MAP COMPLIES WITH NATIONAL MAP ACCURACY STANDARDS  
FOR SALE BY U. S. GEOLOGICAL SURVEY, DENVER 25, COLORADO OR WASHINGTON 25, D. C.  
A FOLDER DESCRIBING TOPOGRAPHIC MAPS AND SYMBOLS IS AVAILABLE ON REQUEST

FILE COPY  
TOPOGRAPHIC DIVISION

DEC 5 1961  
2080