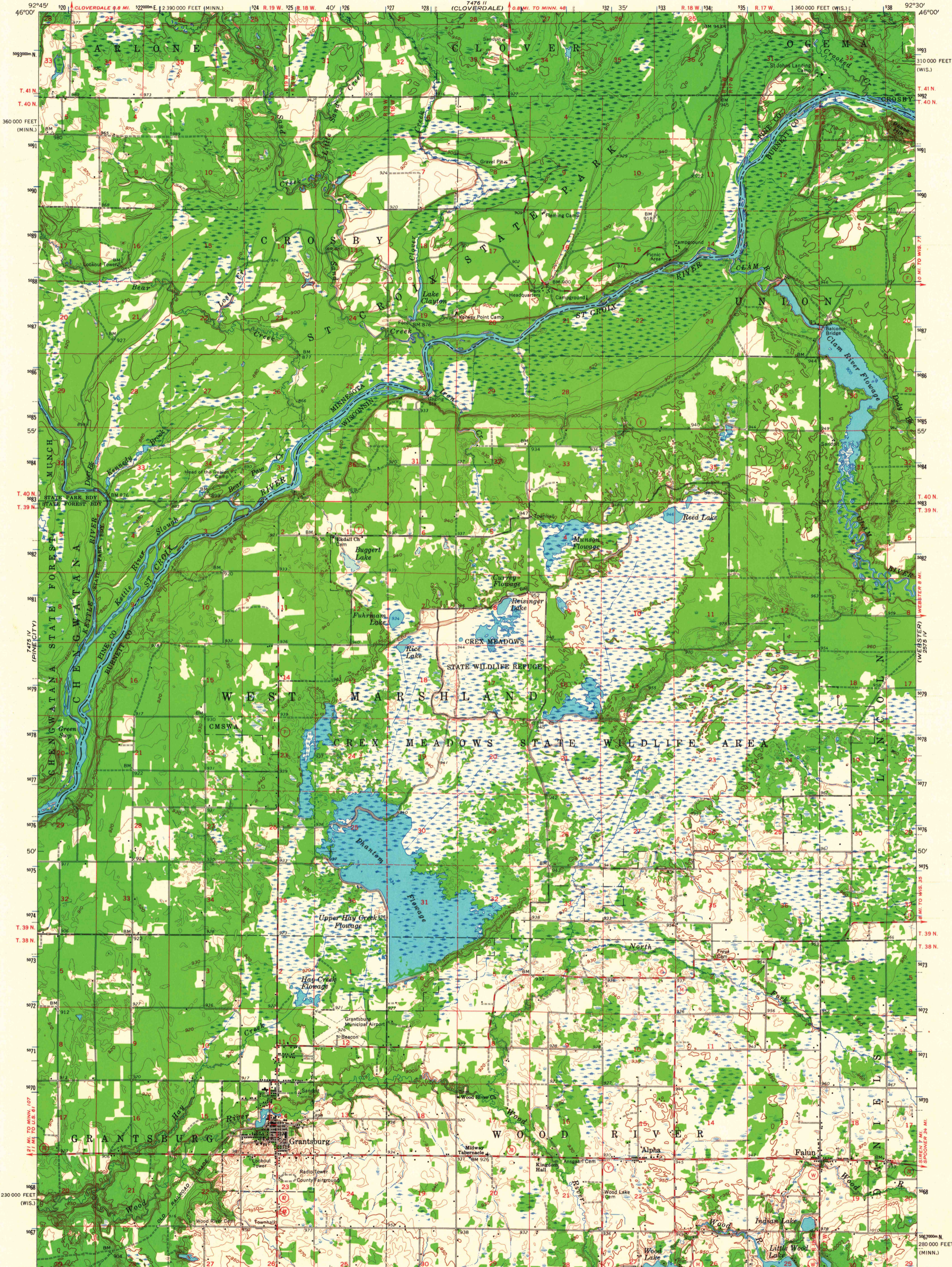


UNITED STATES
DEPARTMENT OF THE INTERIOR
GEOLOGICAL SURVEY

GRANTSBURG QUADRANGLE
WISCONSIN-MINNESOTA
15 MINUTE SERIES (TOPOGRAPHIC)

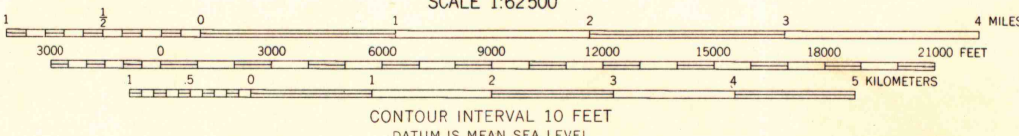
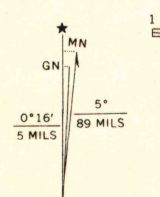


Mapped, edited, and published by the Geological Survey

Control by USGS and USC&GS

Topography by photogrammetric methods from aerial photographs taken 1954 and 1956-58. Field checked 1962

Polyconic projection. 1927 North American datum
10,000-foot grids based on Wisconsin coordinate system, north zone and Minnesota coordinate system, central zone
1000-meter Universal Transverse Mercator grid ticks, zone 15, shown in blue



CONTOUR INTERVAL 10 FEET
DATUM IS MEAN SEA LEVEL

ROAD CLASSIFICATION

Medium-duty ——— Light-duty ———

Unimproved dirt - - - - -

State Route ○



QUADRANGLE LOCATION

GRANTSBURG, WIS.-MINN.

N4545-W9230/15

1962

THIS MAP COMPLIES WITH NATIONAL MAP ACCURACY STANDARDS
FOR SALE BY U. S. GEOLOGICAL SURVEY, DENVER 25, COLORADO OR WASHINGTON 25, D. C.
AND BY THE WISCONSIN GEOLOGICAL AND NATURAL HISTORY SURVEY, MADISON 6, WISCONSIN
A FOLDER DESCRIBING TOPOGRAPHIC MAPS AND SYMBOLS IS AVAILABLE UPON REQUEST

UNIVERSITY AIR PHOTO LIBRARY
University of Wisconsin

AMS 2475 I-SERIES V76 I
LIBRARY USE ONLY

1962
copy
1-1
X