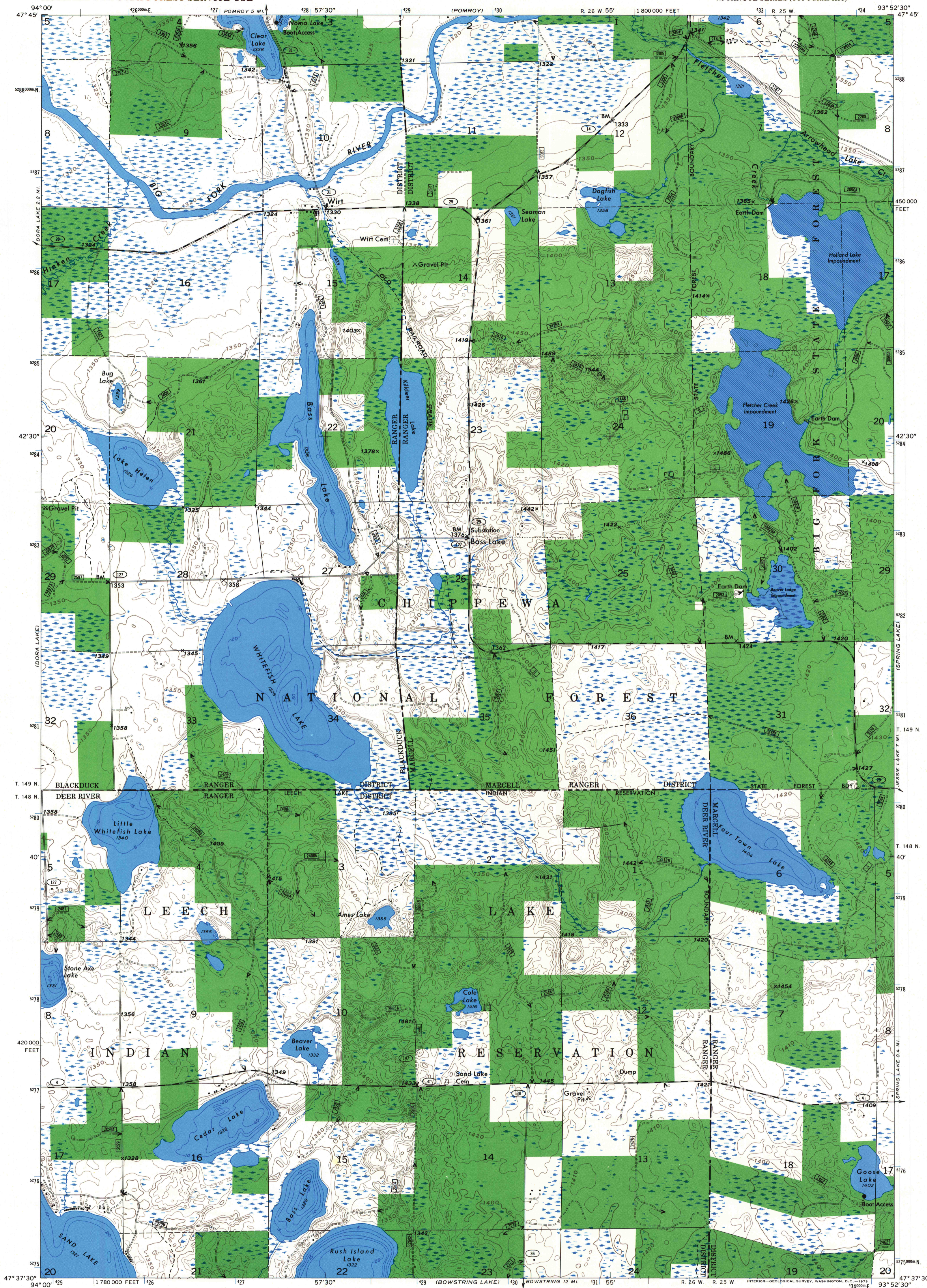


UNITED STATES  
DEPARTMENT OF THE INTERIOR  
GEOLOGICAL SURVEY  
MODIFIED FOR USDA FOREST SERVICE USE

WIRT QUADRANGLE  
MINNESOTA—ITASCA CO.  
7.5 MINUTE SERIES (TOPOGRAPHIC)



Base map prepared by the U.S. Geological Survey  
Control by USGS and USC&GS  
Topography by photogrammetric methods from aerial photographs taken 1969. Field checked 1970  
Hydrography compiled from information furnished by Minnesota Department of Conservation  
Polyconic projection. 1927 North American datum  
10,000-foot grid based on Minnesota coordinate system  
North zone  
1000-meter Universal Transverse Mercator grid ticks, zone 15, shown in blue. 1927 North American datum  
Modification to the USGS base map by the Geomatics Service Center from 1981, 1984, and 1985 aerial photography and 1987 correction guides furnished by the Eastern Region.

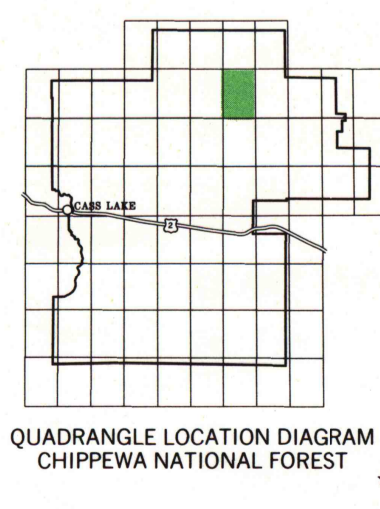
SCALE 1:24 000

CONTOUR INTERVAL 10 FEET  
DASHED LINES REPRESENT 5-FOOT CONTOURS  
DATUM IS MEAN SEA LEVEL

UTM GRID AND 1987 MAGNETIC NORTH DECLINATION AT CENTER OF SHEET

0° 41' 12" MILS

TOWNSHIP AND SECTION LINE CLASSIFICATION	
—	Surveyed, Location Reliable
- - -	Surveyed, Location Unreliable
- · - · -	Trail, Location Approximate
—	National Forest Boundary
—	National Forest Land as of 1987
—	Primary Highway
—	Secondary Highway
—	Light Duty Road
- - -	Primitive Road
- · - · -	Trail
- · - · -	Road, Location Approximate
⊠	U.S. Highway
⊠	State Highway
⊠	County Highway
⊠	Forest Road
⊠	Forest Trail



Copies of this map are available for purchase at:  
Forest Supervisor's Office  
Cass Lake, Minn. 56633

WIRT, MINN.  
N4737.5—W9352.5/7.5  
1970  
DMA 7279 III NW—  
U.S. GOVERNMENT PRINTING OFFICE: 1969-745-235

R10-23-90