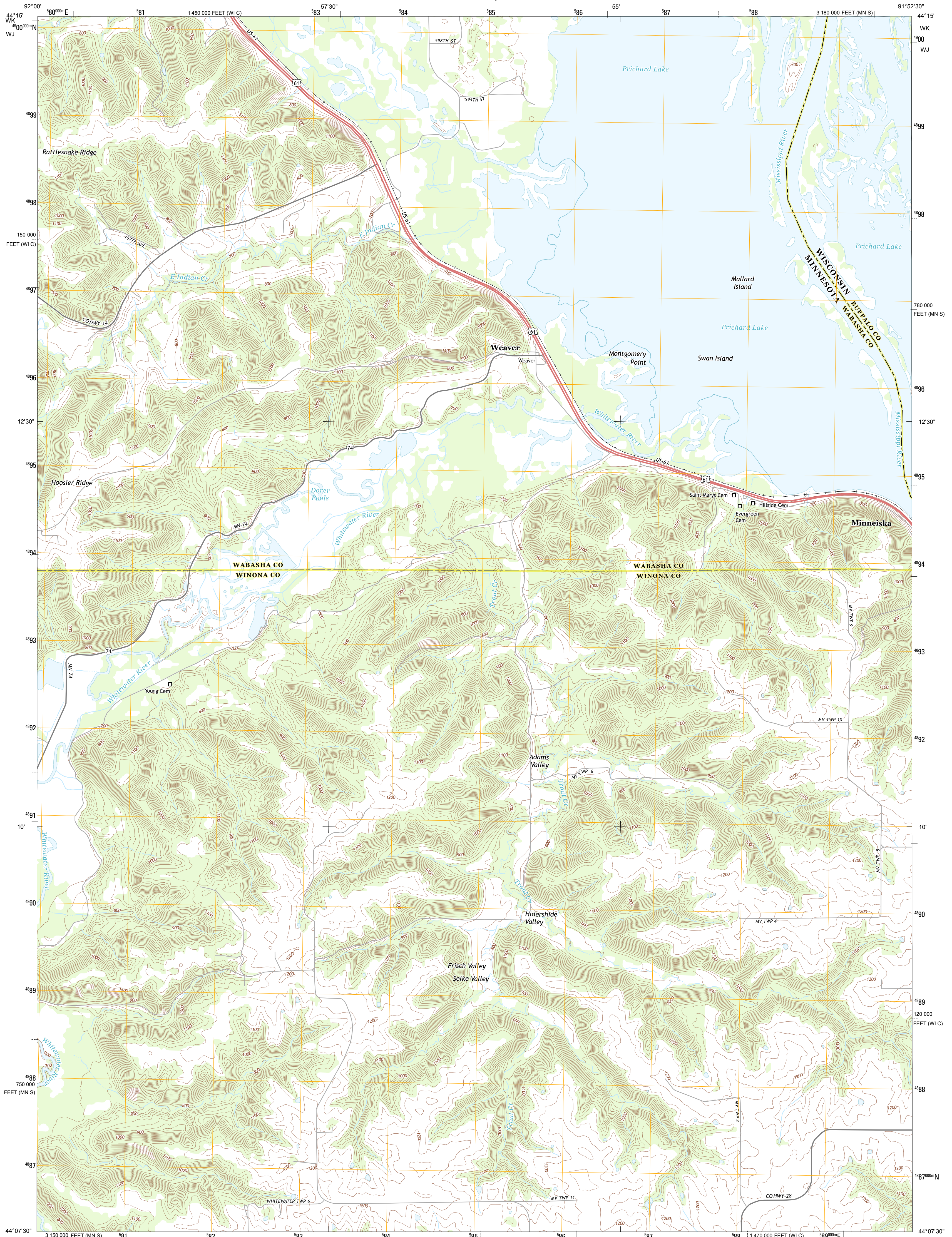




U.S. DEPARTMENT OF THE INTERIOR
U. S. GEOLOGICAL SURVEY

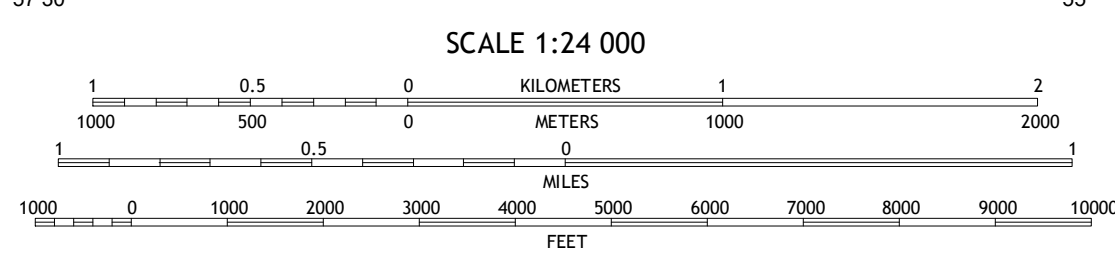
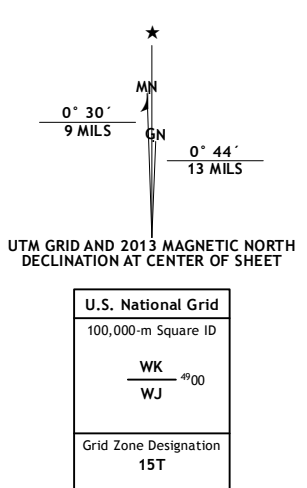


WEAVER QUADRANGLE
MINNESOTA-WISCONSIN
7.5-MINUTE SERIES



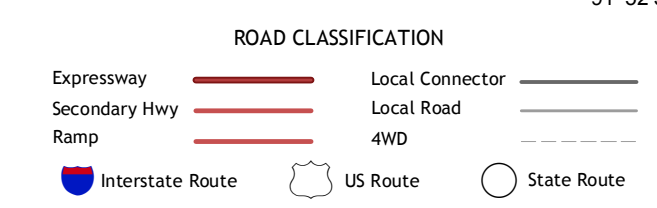
Produced by the United States Geological Survey
North American Datum of 1983 (NAD83)
World Geodetic System of 1984 (WGS84), Projection and
1 000-meter grid; Universal Transverse Mercator, Zone 15T
10 000-foot ticks; Minnesota Coordinate System of 1983 (south
zone), Wisconsin Coordinate System of 1983 (central zone)

Imagery.....NAIP, July 2010
Roads.....C2006-2012 TomTom
Names.....GNIS, 2013
Hydrography.....National Hydrography Dataset, 2010
Contours.....National Elevation Dataset, 2008
Boundaries.....Census, IBW, IBC, USGS, 1972 - 2012



Wabasha South	Alma	Cream
Beaver	Weaver	Cochrane
Elba	Altura	Rollingstone

ADJOINING 7.5 QUADRANGLES



WEAVER, MN-WI
2013