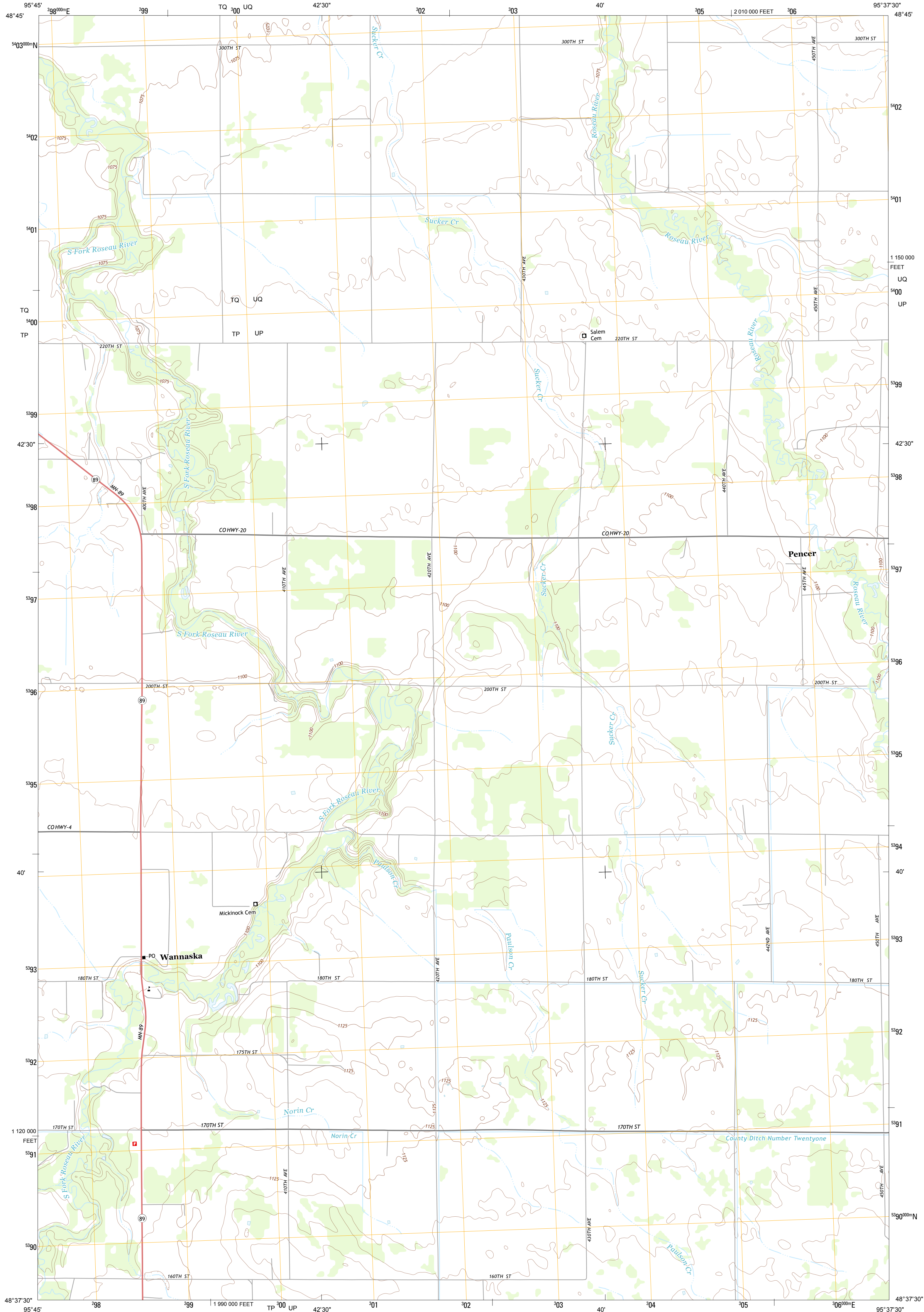




U.S. DEPARTMENT OF THE INTERIOR  
U. S. GEOLOGICAL SURVEY

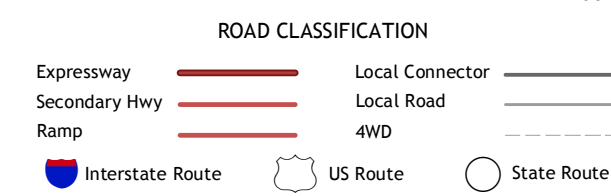
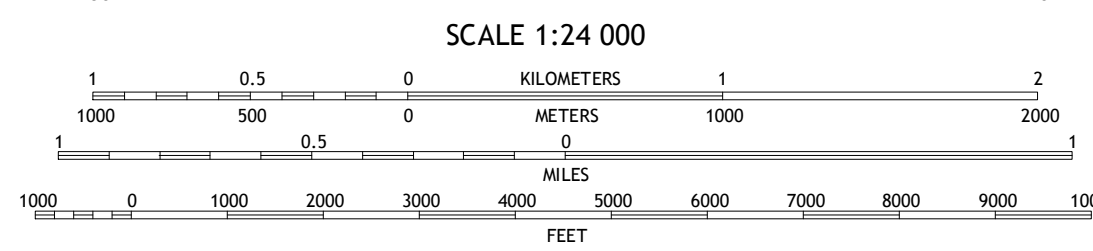
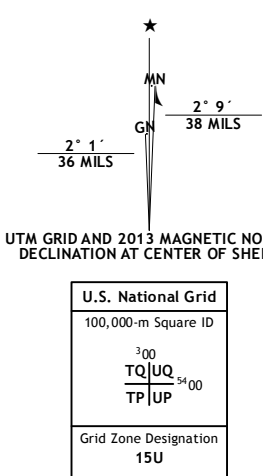


WANNASKA QUADRANGLE  
MINNESOTA-ROSEAU CO.  
7.5-MINUTE SERIES



Produced by the United States Geological Survey  
North American Datum of 1983 (NAD83)  
World Geodetic System of 1984 (WGS84), Projection and  
1 000-meter grid; Universal Transverse Mercator, Zone 15U  
10 000-foot ticks; Minnesota Coordinate System of 1983 (north  
zone)

Imagery.....NAIP, August 2010  
Roads.....©2006-2012 TomTom  
Names.....GNIS, 2013  
Hydrography.....National Hydrography Dataset, 2010  
Contours.....National Elevation Dataset, 2012  
Boundaries.....Census, IBWC, IBC, USGS, 1972 - 2012



QUADRANGLE LOCATION

Roseau	Malling	Salol
Thief Lake NE	Wannaska	Wannaska NE
Thief Lake SE	Wannaska SW	Skime

ADJOINING 7.5' QUADRANGLES

WANNASKA, MN  
2013