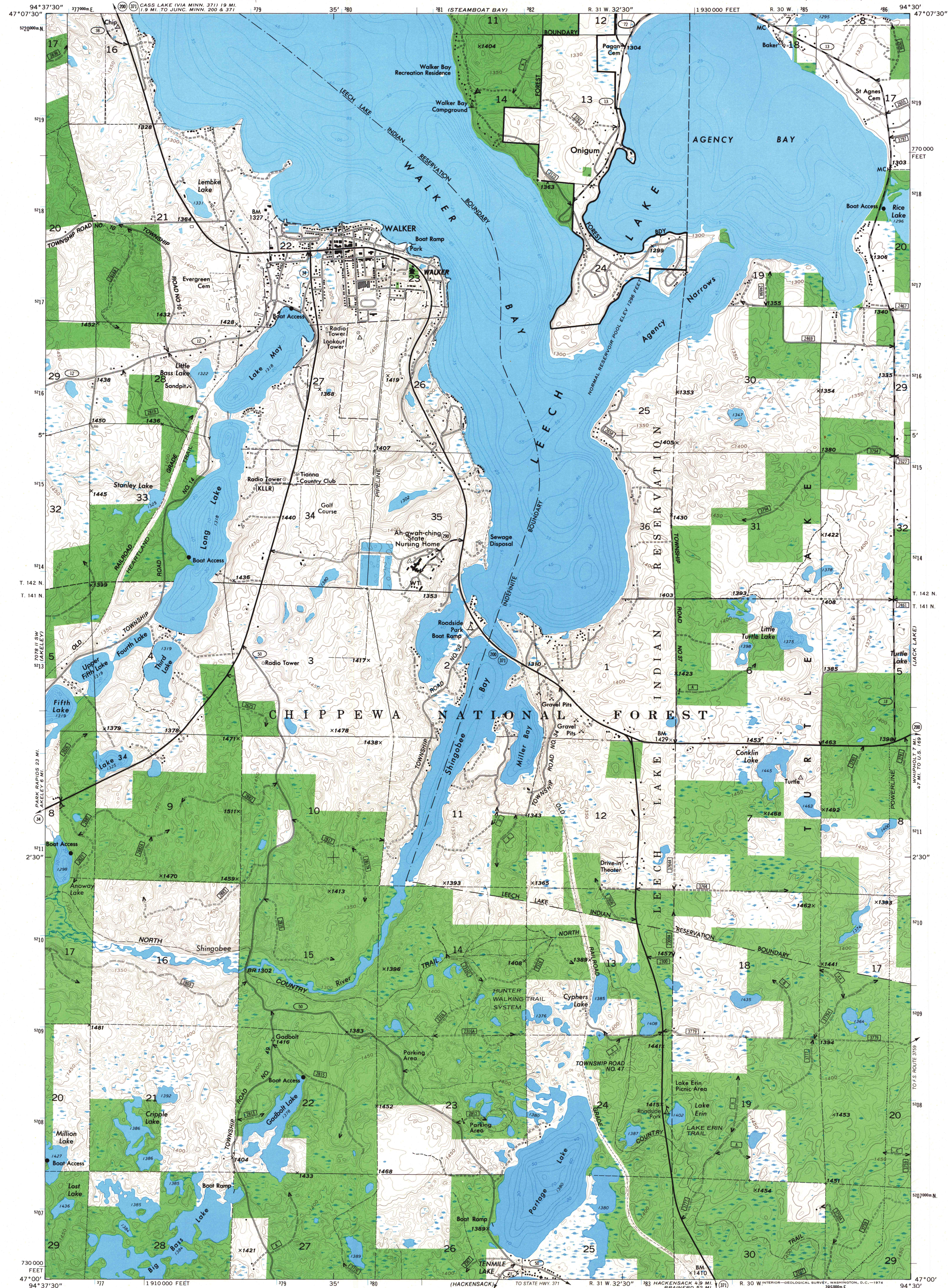
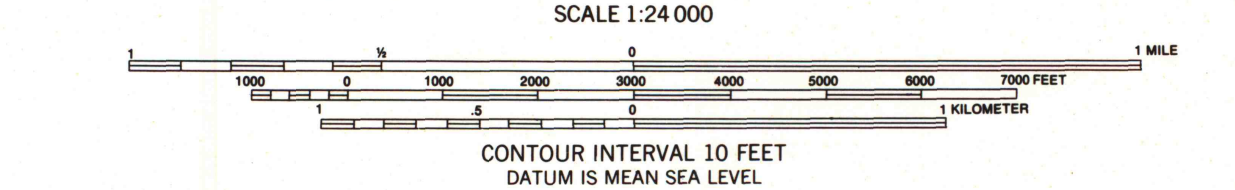
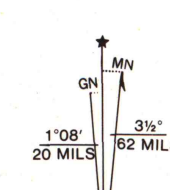


UNITED STATES  
DEPARTMENT OF THE INTERIOR  
GEOLOGICAL SURVEY  
MODIFIED FOR USDA FOREST SERVICE USE

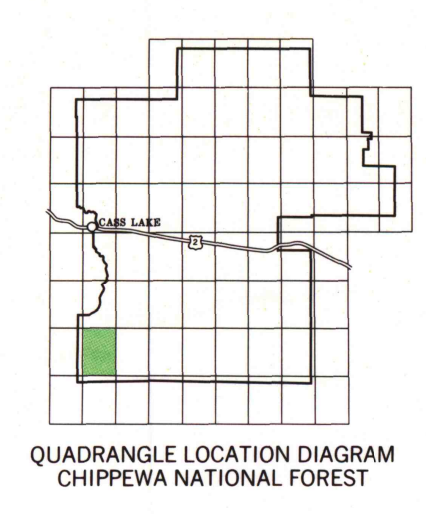
WALKER QUADRANGLE  
MINNESOTA—CASS CO.  
7.5 MINUTE SERIES (TOPOGRAPHIC)



Base map prepared by the U.S. Geological Survey  
Control by USGS and USC&GS  
Topography by photogrammetric methods from aerial  
photographs taken 1972. Field checked 1972  
Hydrography compiled from information furnished by  
Minnesota Department of Conservation  
Projection and 10,000-foot grid ticks: Minnesota coordinate  
system, central zone (Lambert conformal conic)  
1000-meter Universal Transverse Mercator grid ticks,  
zone 15, shown in blue. 1927 North American datum  
Modification to the USGS base map by the Geomatics  
Service Center from 1981, 1984, and 1985 aerial photography  
and 1987 correction guides furnished by the Eastern Region.



TOWNSHIP AND SECTION LINE CLASSIFICATION		LEGEND	
—	National Forest Boundary	—	Primary Highway
—	National Forest Land as of 1987	—	Secondary Highway
—	Surveyed, Location Reliable	—	Light Duty Road
---	Surveyed, Location Unreliable	—	Primitive Road
---	Trail, Location Approximate	—	Trail
---		—	Road, Location Approximate
		165	U.S. Highway
		344	State Highway
		488	County Highway
		6035	Forest Road
		2502	Forest Trail



Copies of this map are  
available for purchase at:  
Forest Supervisor's Office  
Cass Lake, Minn. 56633

WALKER, MINN.  
N4700—W9430/7.5  
1972  
DMA 7078 II SE—SERIES V8720

R10-23-90