

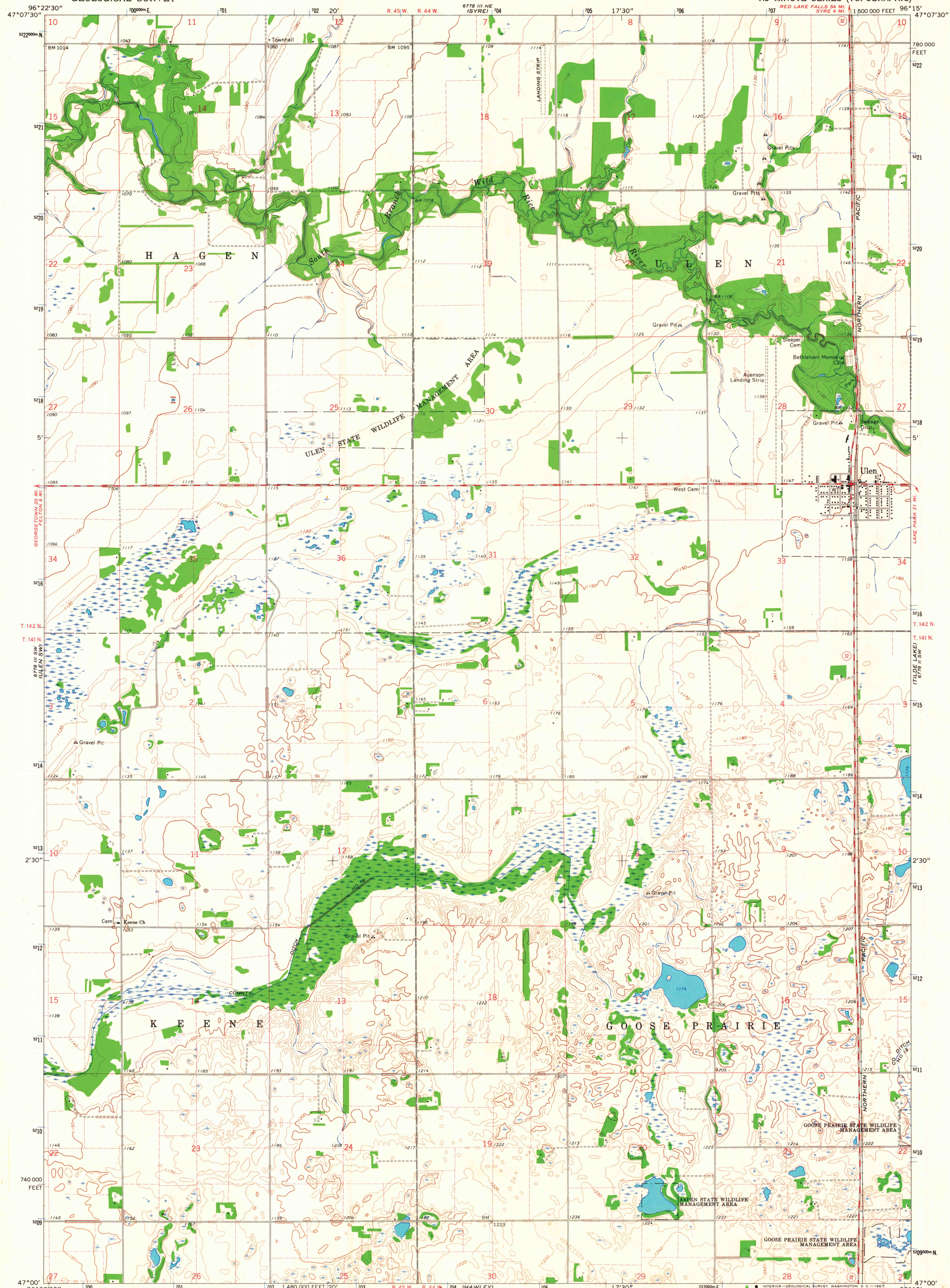
6778 III NW
ULEN, MINN.

UNITED STATES
DEPARTMENT OF THE INTERIOR
GEOLOGICAL SURVEY

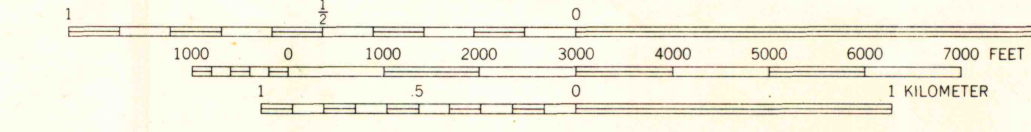
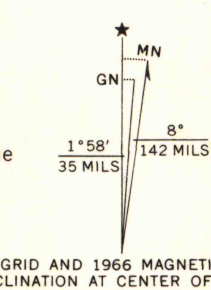
STATE OF MINNESOTA
DEPARTMENT OF ADMINISTRATION

ULEN QUADRANGLE
MINNESOTA—CLAY CO.
7.5 MINUTE SERIES (TOPOGRAPHIC)

6778 I NW
6778 II NW
6778 III NW
6778 IV NW



Mapped, edited, and published by the Geological Survey
Control by USGS and USC&GS
Topography by photogrammetric methods from aerial
photographs taken 1963. Field checked 1966
Polyconic projection. 1927 North American datum
10,000-foot grid based on Minnesota coordinate system, central zone
1000-meter Universal Transverse Mercator grid ticks,
zone 14, shown in blue
Fine red dashed lines indicate selected fence and field lines
where generally visible on aerial photographs
This information is unchecked



SCALE 1:24 000
CONTOUR INTERVAL 10 FEET
DOTTED LINES REPRESENT 5-FOOT CONTOURS
DATUM IS MEAN SEA LEVEL

MAP AND AIR PHOTO LIBRARY
University of Wisconsin

ROAD CLASSIFICATION
Medium-duty — Light-duty
Unimproved dirt — State Route



THIS MAP COMPLIES WITH NATIONAL MAP ACCURACY STANDARDS
FOR SALE BY U.S. GEOLOGICAL SURVEY, DENVER, COLORADO 80225, OR WASHINGTON, D. C. 20242
A FOLDER DESCRIBING TOPOGRAPHIC MAPS AND SYMBOLS IS AVAILABLE ON REQUEST

ULEN, MINN.
N4700—W9615/7.5

1966
AMS 6778 III SE—SERIES V872