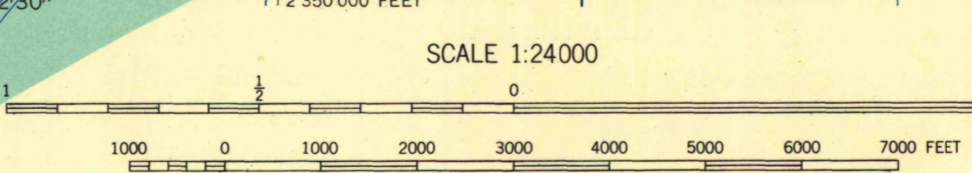
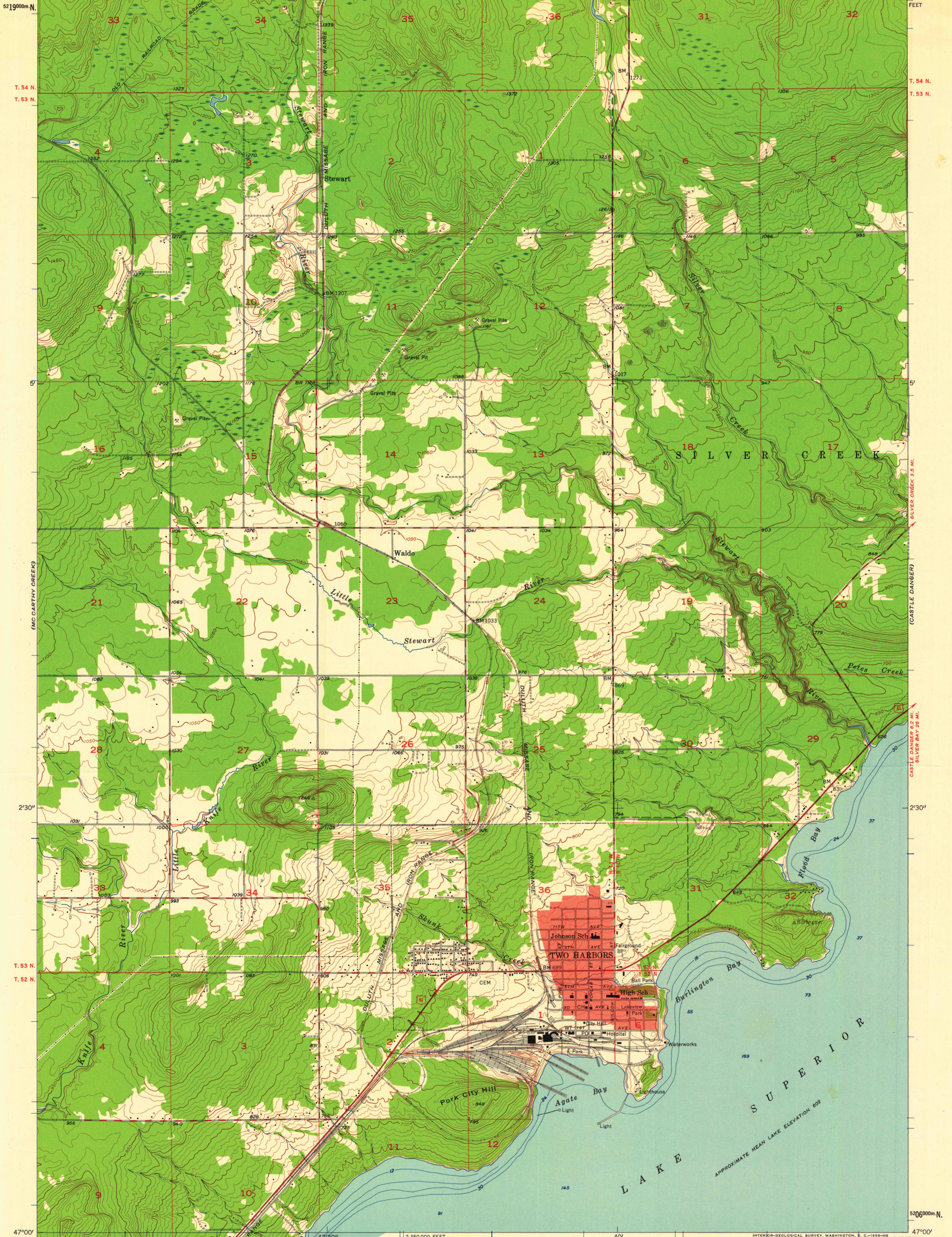


91°45' 595000m E. 42°30' (TWO HARBORS 1:62 500) R. 11 W. 40' 1.39 MI. TO MINN. 1 MC NAIR 16 MI. R. 10 W. 12 360 000 FEET 91°37'30" 47°07'30"



SCALE 1:24000
CONTOUR INTERVAL 10 FEET
DATUM IS MEAN SEA LEVEL
DEPTH CURVES AND SOUNDINGS IN FEET—DATUM IS 601 FEET

THIS MAP COMPLIES WITH NATIONAL MAP ACCURACY STANDARDS
FOR SALE BY U. S. GEOLOGICAL SURVEY, DENVER 2, COLORADO OR WASHINGTON 25, D. C.
A FOLDER DESCRIBING TOPOGRAPHIC MAPS AND SYMBOLS IS AVAILABLE ON REQUEST

ROAD CLASSIFICATION
Heavy-duty ——— Light-duty ———
Medium-duty ——— Unimproved dirt - - - - -
U. S. Route



TWO HARBORS, MINN.
SW/4 TWO HARBORS 15' QUADRANGLE
N 4700—W 9137.5/7.5

1957

Mapped, edited, and published by the Geological Survey
Control by USGS and USC&GS
Topography from aerial photographs by Kesh plotter
Aerial photographs taken 1952. Field check 1957
Hydrography compiled from U. S. Lake Survey chart 96 (1955)
Polyconic projection. 1927 North American datum
10,000-foot grid based on Minnesota coordinate system, north zone
1000-meter Universal Transverse Mercator grid ticks,
zone 15, shown in blue
Red tint indicates area in which only
landmark buildings are shown

MAP AND AIR PHOTO LIBRARY
University of Wisconsin