

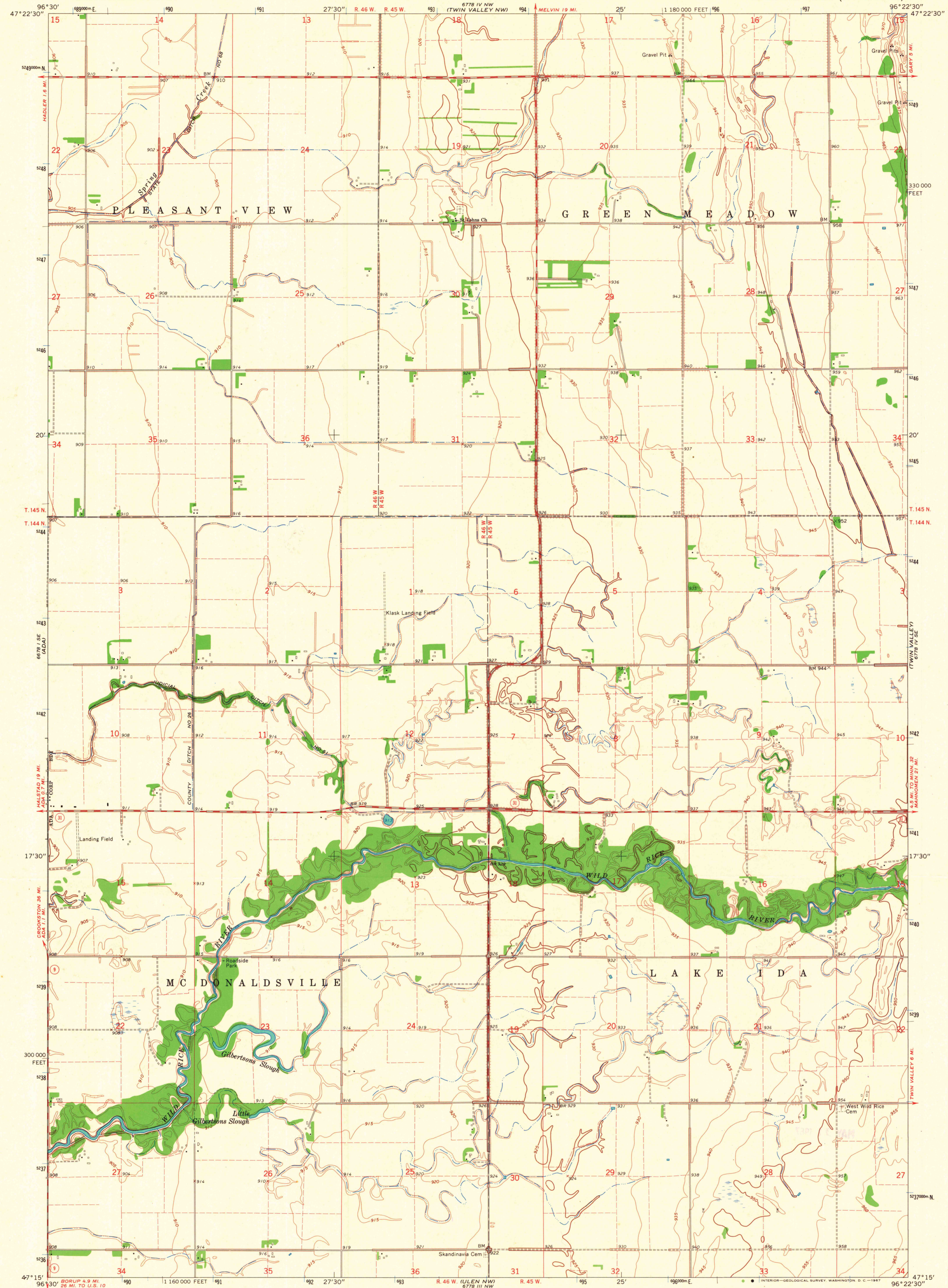
6678 1/4 E
(L. COCHET)

UNITED STATES
DEPARTMENT OF THE INTERIOR
GEOLOGICAL SURVEY

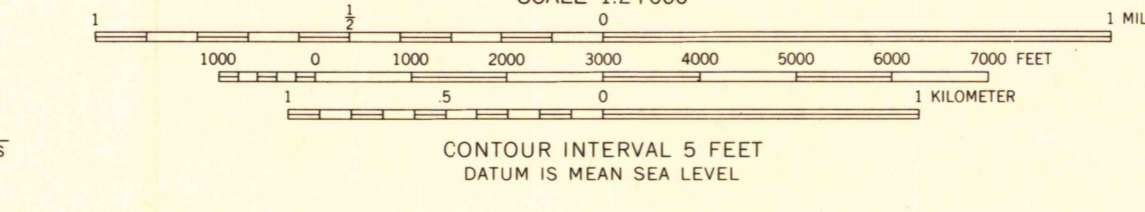
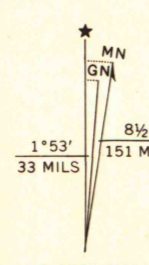
STATE OF MINNESOTA
DEPARTMENT OF ADMINISTRATION

TWIN VALLEY SW QUADRANGLE
MINNESOTA—NORMAN CO.
7.5 MINUTE SERIES (TOPOGRAPHIC)

6778 1/4 E
(L. LAMING)



Mapped, edited, and published by the Geological Survey
Control by USGS and USC&GS
Planimetry by photogrammetric methods from aerial photographs taken 1963. Topography by planetable surveys 1965
Polyconic projection. 1927 North American datum
10,000-foot grid based on Minnesota coordinate system, north zone
1000-meter Universal Transverse Mercator grid ticks, zone 14, shown in blue
Fine red dashed lines indicate selected fence and field lines where generally visible on aerial photographs
This information is unchecked



MAP AND AIR PHOTO LIBRARY
University of Wisconsin

ROAD CLASSIFICATION
Medium-duty
Light-duty
Unimproved dirt
State Route

MINN.
QUADRANGLE LOCATION

TWIN VALLEY SW, MINN.
N4715—W9622.5/7.5
1965
AMS 6778 IV SW—SERIES V872

THIS MAP COMPLIES WITH NATIONAL MAP ACCURACY STANDARDS
FOR SALE BY U.S. GEOLOGICAL SURVEY, DENVER, COLORADO 80225, OR WASHINGTON, D. C. 20542
A FOLDER DESCRIBING TOPOGRAPHIC MAPS AND SYMBOLS IS AVAILABLE ON REQUEST