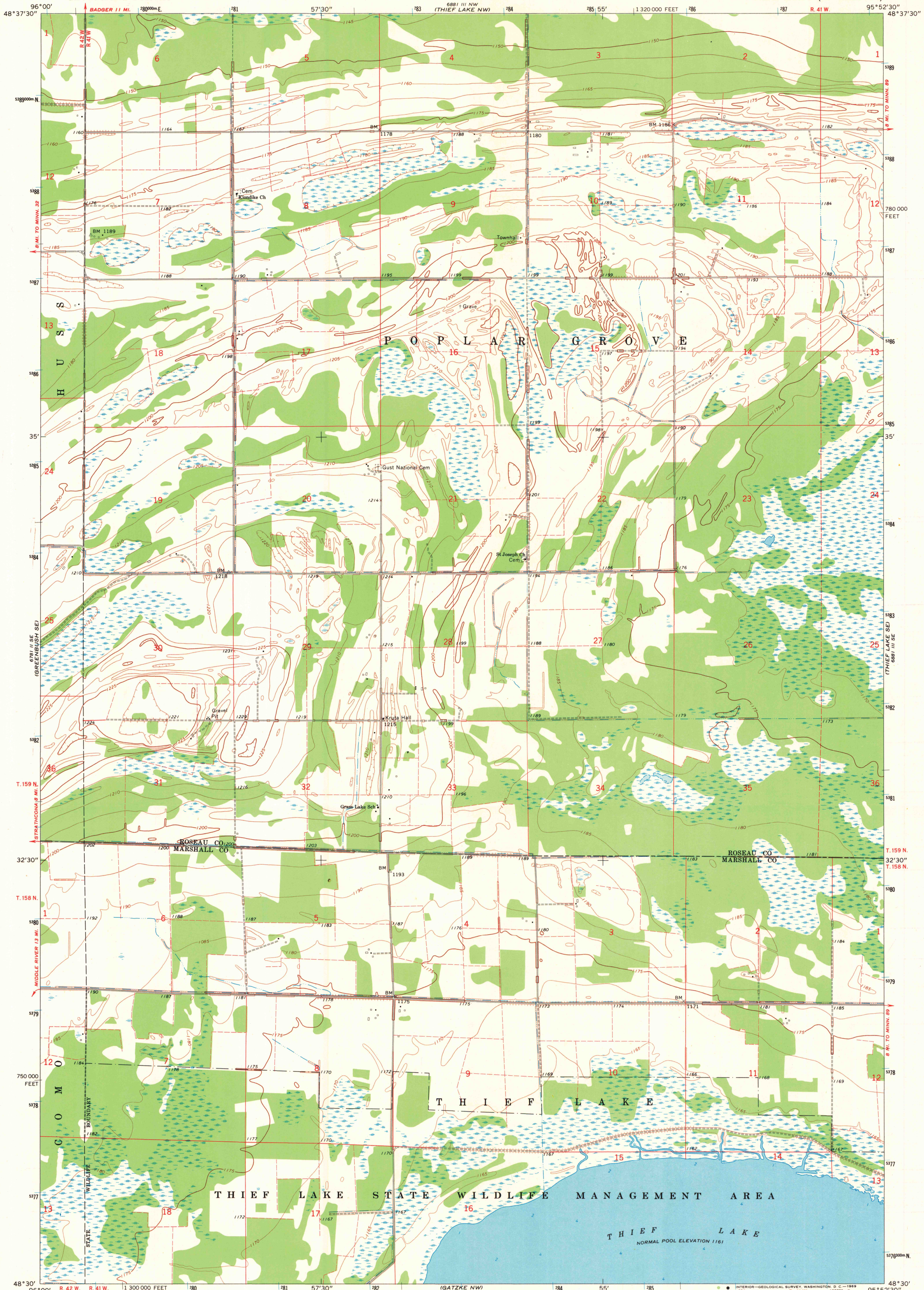
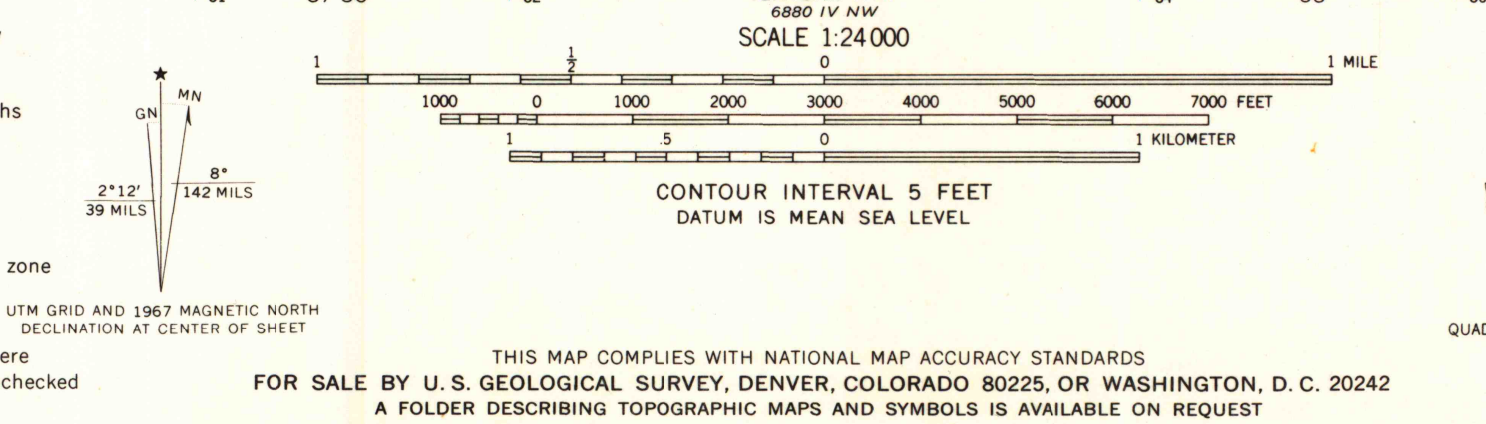


6881 III SW  
REF. TO JUST NE

6881 III NE  
REF. TO JUST NE



Mapped, edited, and published by the Geological Survey  
Control by USGS and USC&GS  
Planimetry by photogrammetric methods from aerial photographs taken 1966. Topography by planetable surveys 1967  
Soundings compiled from charts furnished by Minnesota Department of Conservation  
Polyconic projection. 1927 North American datum  
10,000-foot grid based on Minnesota coordinate system, north zone  
1000-meter Universal Transverse Mercator grid ticks, zone 15, shown in blue  
Fine red dashed lines indicate selected fence and field lines where generally visible on aerial photographs. This information is unchecked



ROAD CLASSIFICATION  
Light-duty ——— Unimproved dirt - - - - -  
THIEF LAKE, MINN.  
N4830—W9552.5/7.5  
1967  
AMS 6881 III SW—SERIES V872

MAP AND PHOTO LIBRARY  
JAN 5 1970  
University of Wisconsin