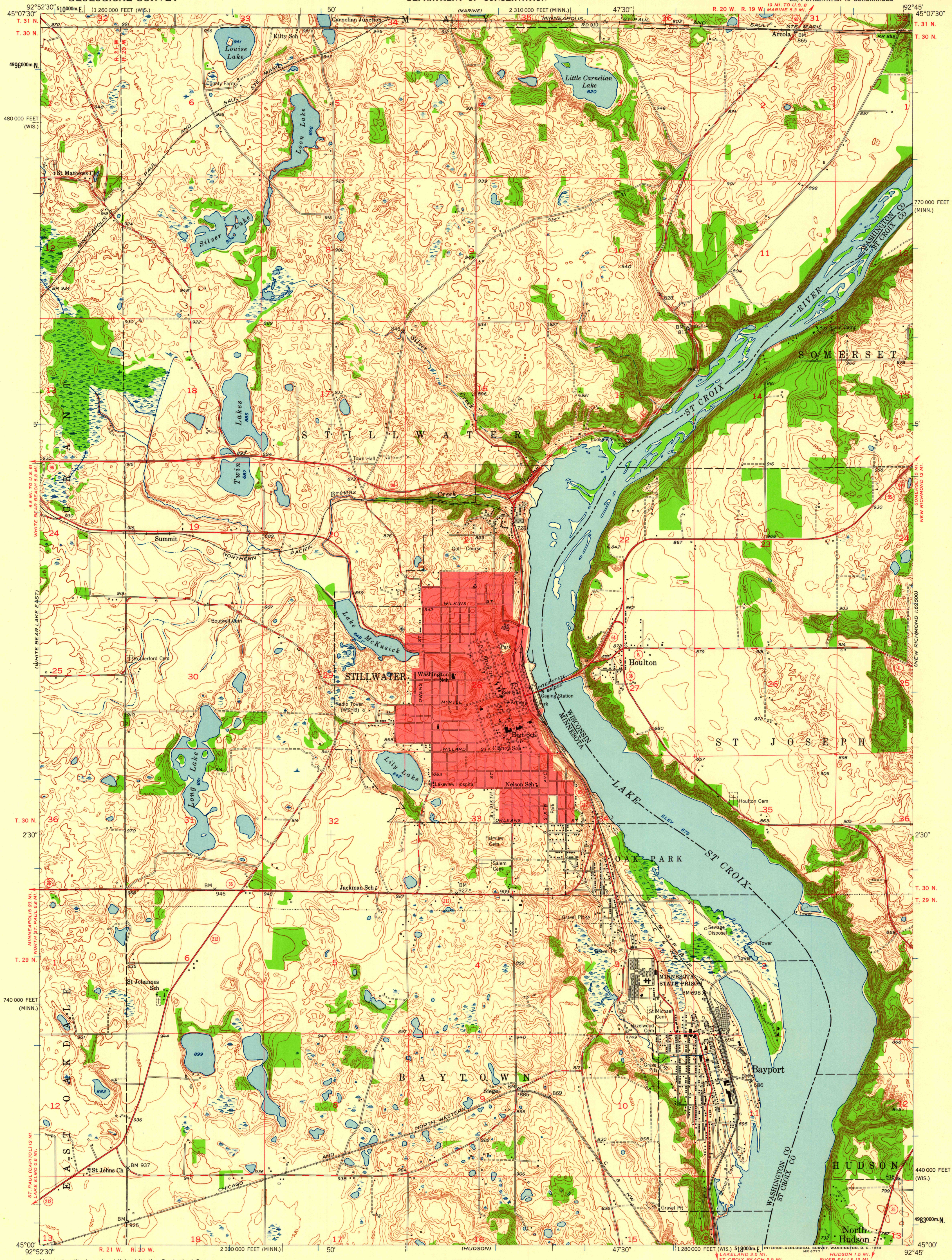
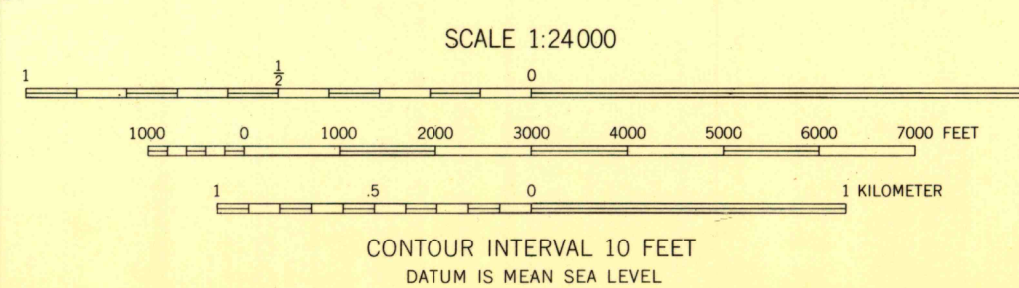


(NEW RICHMOND)
1:62,500



Mapped, edited, and published by the Geological Survey
Control by USGS, USC&GS, and USCE
Topography by multiplex methods from aerial photographs
taken 1949 and by plane-table surveys 1946
Field check 1951
Polyconic projection. 1927 North American datum
10,000-foot grids based on Minnesota coordinate system, south zone
and Wisconsin coordinate system, central zone
1000-meter Universal Transverse Mercator grid ticks,
zone 15, shown in blue
Red tint indicates area in which only landmark buildings are shown

TRUE NORTH
MAGNETIC NORTH
APPROXIMATE MEAN
DECLINATION, 1951



USGS
Historical File
Topographic Division

ROAD CLASSIFICATION
Heavy-duty 4 LANE 16 LANE Light-duty
Medium-duty 4 LANE 16 LANE Unimproved dirt
U. S. Route State Route

U.S.G.S. STILLWATER, MINN.-WIS.
FILE COPY
TOPOGRAPHIC DIVISION
SE/4 STILLWATER 15' QUADRANGLE
N4500-W9245/7.5
1951

THIS MAP COMPLIES WITH NATIONAL MAP ACCURACY STANDARDS
FOR SALE BY U. S. GEOLOGICAL SURVEY, DENVER 25, COLORADO OR WASHINGTON 25, D. C.
AND BY THE WISCONSIN GEOLOGICAL AND NATURAL HISTORY SURVEY, MADISON 5, WISCONSIN
A FOLDER DESCRIBING TOPOGRAPHIC MAPS AND SYMBOLS IS AVAILABLE ON REQUEST

JUN 18 1951