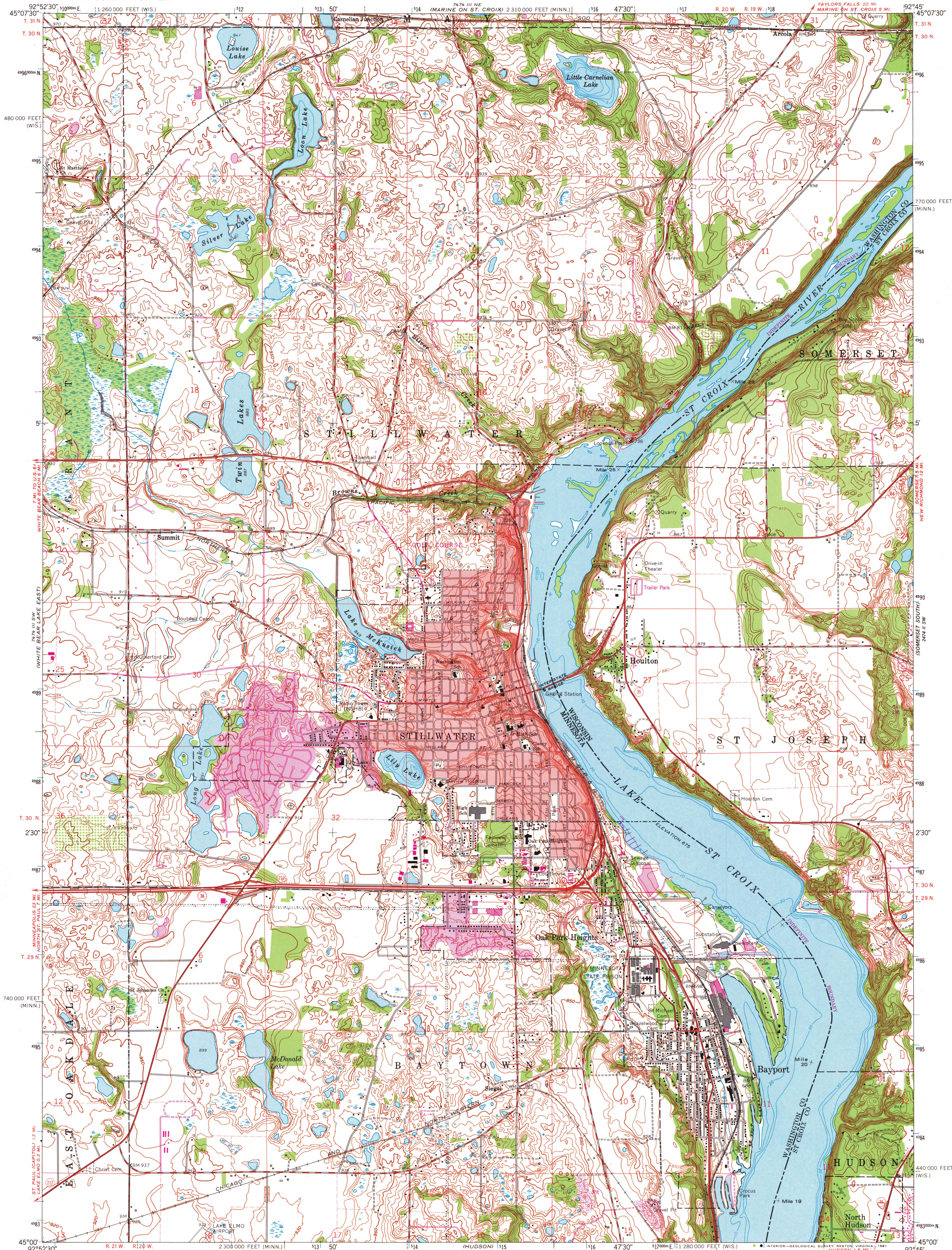
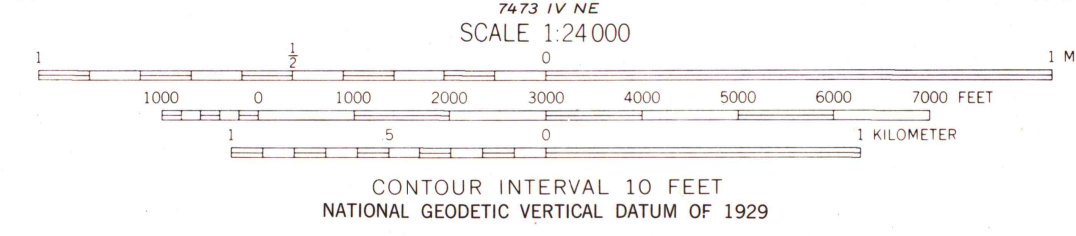


2474 III NW
(SOMERSET NORTH)



Mapped, edited, and published by the Geological Survey in cooperation with Minnesota Department of Administration Control by USGS, USC&GS, and USCE
Topography by photogrammetric methods from aerial photography taken 1949 and planimetric surveys 1946. Revised 1967 from aerial photographs taken 1966
Depth curves compiled from charts furnished by Minnesota Department of Conservation
Polyconic projection. 1927 North American datum 10,000-foot grids based on Minnesota coordinate system, south zone and Wisconsin coordinate system, central zone 1000-meter Universal Transverse Mercator grid ticks, zone 15, shown in blue
Red tint indicates area in which only landmark buildings are shown
To place on the predicted North American Datum 1983 move the projection lines 7 meters north and 16 meters east as shown by dashed corner ticks



ROAD CLASSIFICATION
Heavy-duty — Light-duty
Medium-duty — Unimproved dirt
State Route



STILLWATER, MINN. - WIS.
N4500—W9245/7.5
1967
PHOTOREVISED 1980
DMA 7474 III SE—SERIES V872

THIS MAP COMPLIES WITH NATIONAL MAP ACCURACY STANDARDS FOR SALE BY U.S. GEOLOGICAL SURVEY RESTON, VIRGINIA 22092 AND WISCONSIN GEOLOGICAL AND NATURAL HISTORY SURVEY, MADISON, WISCONSIN 53706 A FOLDER DESCRIBING TOPOGRAPHIC MAPS AND SYMBOLS IS AVAILABLE ON REQUEST

Revisions shown in purple compiled from aerial photographs taken 1977. Map edited 1980 This information not field checked
Purple tint indicates extension of urban area

MAP AND AIR PHOTO LIBRARY
JUN 15 1981
University of Wisconsin
Madison

1980
copy
1-1