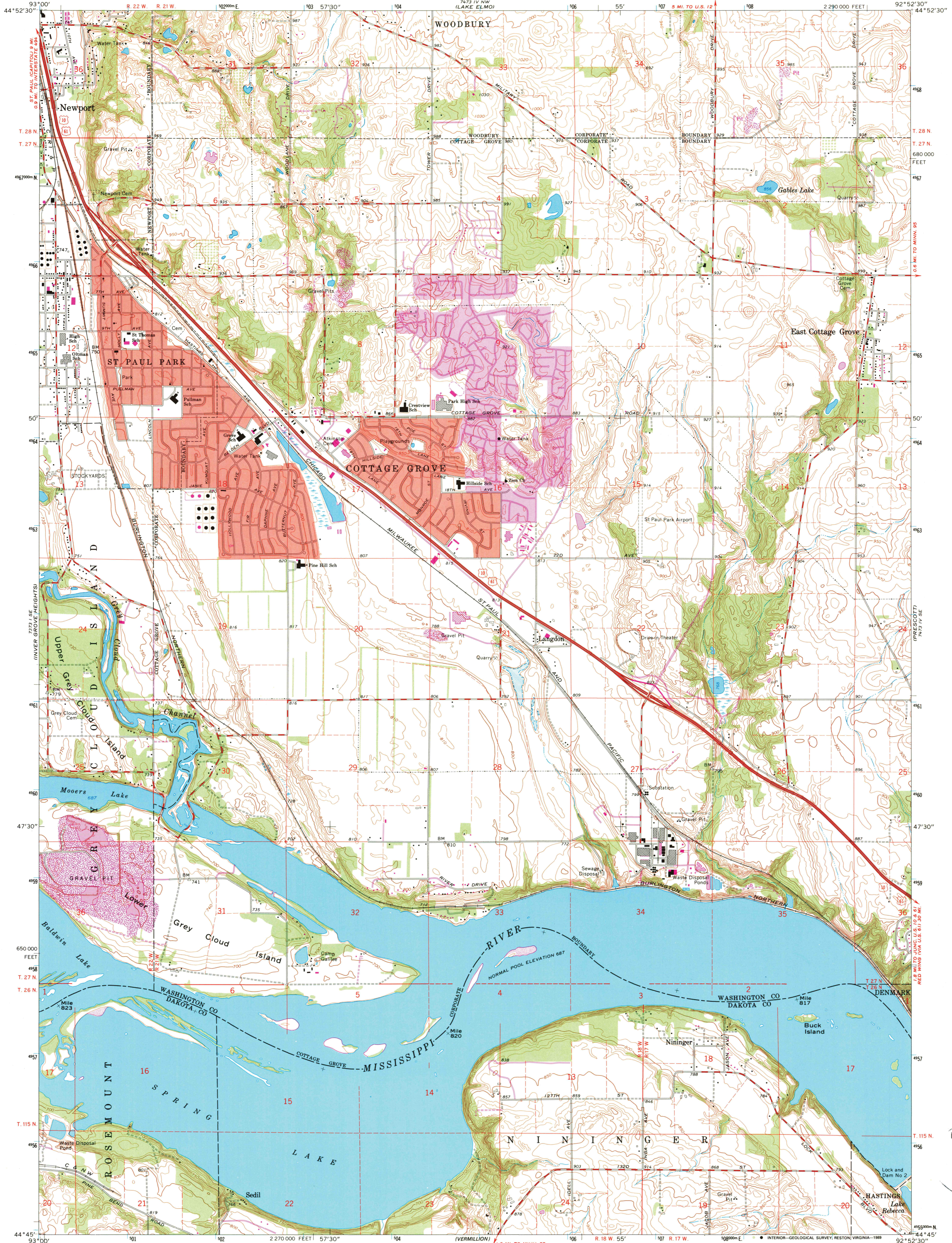
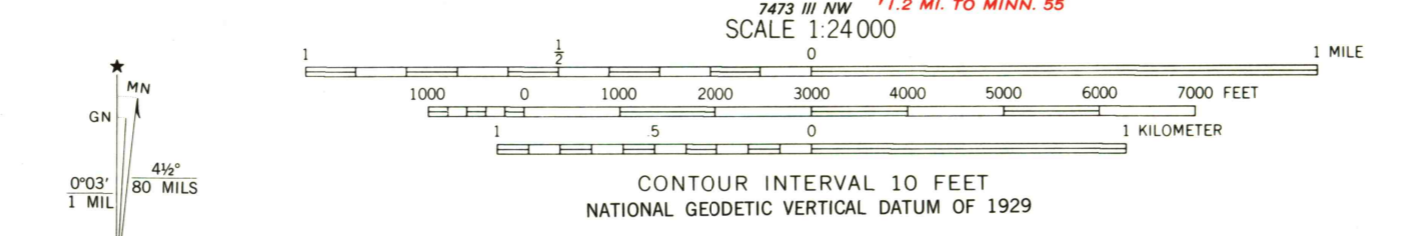


UNITED STATES
DEPARTMENT OF THE INTERIOR
GEOLOGICAL SURVEY

ST. PAUL PARK QUADRANGLE
MINNESOTA
7.5 MINUTE SERIES (TOPOGRAPHIC)



Mapped, edited, and published by the Geological Survey in cooperation with Minnesota Department of Administration Control by USGS, USC&GS, and Mississippi River Commission
Topography by photogrammetric methods from aerial photographs taken 1947. Field checked 1950. Revised from aerial photographs taken 1966. Field checked 1967
Polyconic projection. 1927 North American datum 10,000-foot grid based on Minnesota coordinate system, south zone 1000-meter Universal Transverse Mercator grid ticks, zone 15, shown in blue
Red tint indicates areas in which only landmark buildings are shown
To place on the predicted North American Datum 1983 move the projection lines 7 meters north and 17 meters east as shown by dashed corner ticks



ROAD CLASSIFICATION
Heavy-duty ——— Light-duty ———
Medium-duty ——— Unimproved dirt ———
U.S. Route

ST. PAUL PARK, MINN.
44092-G8-TF-024

1967
PHOTOREVISED 1972 AND 1980
DMA 7473 IV SW—SERIES V872

THIS MAP COMPLIES WITH NATIONAL MAP ACCURACY STANDARDS
FOR SALE BY U. S. GEOLOGICAL SURVEY, DENVER, COLORADO 80225
OR RESTON, VIRGINIA, 22092
A FOLDER DESCRIBING TOPOGRAPHIC MAPS AND SYMBOLS IS AVAILABLE ON REQUEST

USGS NMI: HISTORICAL MAP
JUL 25 1989
REC'D FILE COPY