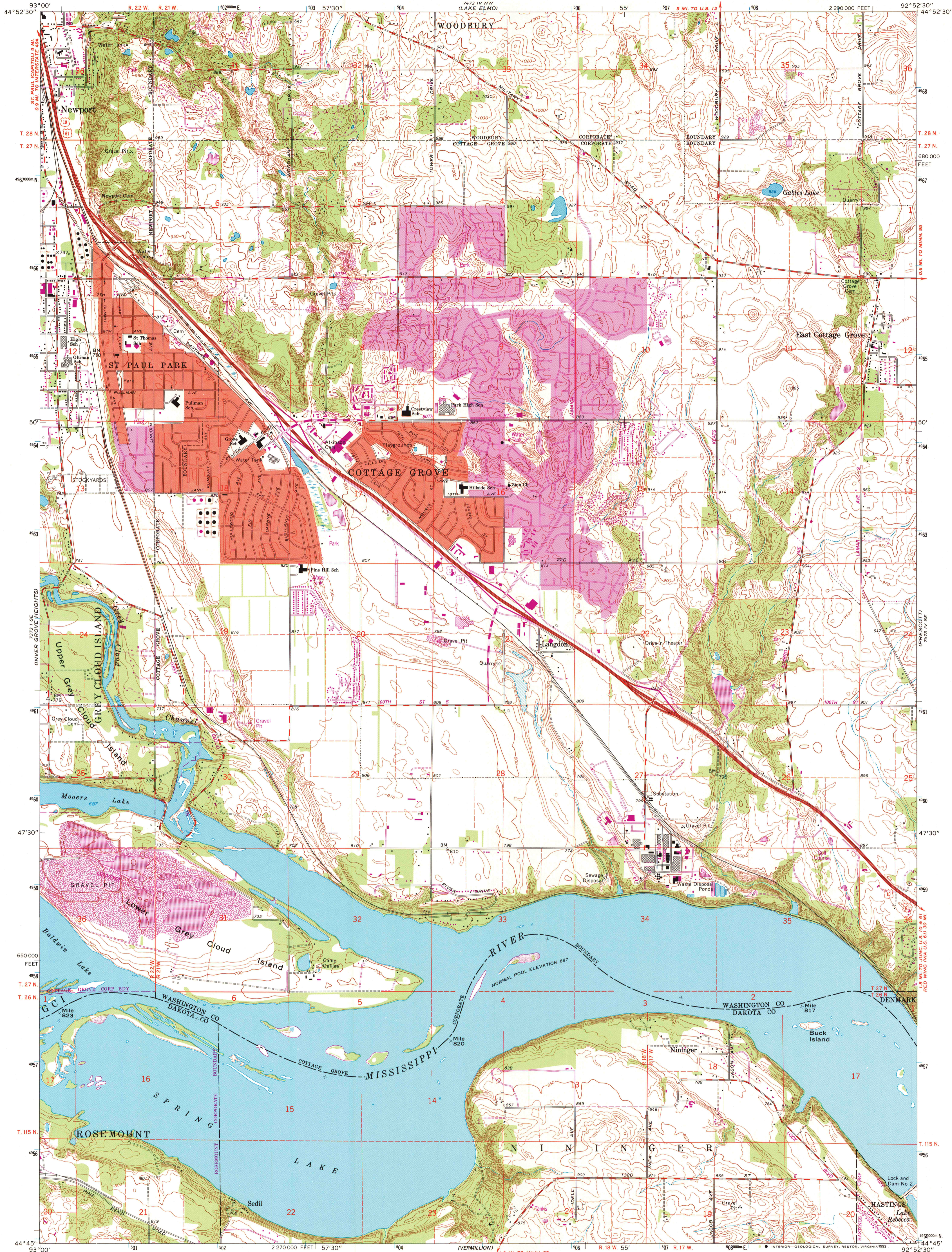


UNITED STATES
DEPARTMENT OF THE INTERIOR
GEOLOGICAL SURVEY

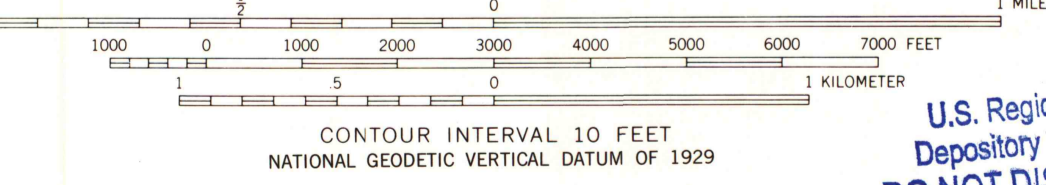
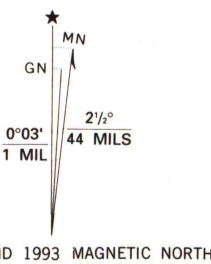
ST. PAUL PARK QUADRANGLE
MINNESOTA
7.5 MINUTE SERIES (TOPOGRAPHIC)



Produced by the United States Geological Survey in cooperation with Minnesota Department of Administration Control by USGS, NOS/NOAA and Mississippi River Commission Topography by photogrammetric methods from aerial photographs taken 1947. Field checked 1950. Revised from aerial photographs taken 1966. Field checked 1967. Projection and 10,000-foot grid ticks: Minnesota coordinate system, south zone (Lambert conformal conic) 1000-meter Universal Transverse Mercator grid ticks, zone 15, shown in blue 1927 North American Datum (NAD 27)

North American Datum of 1983 (NAD 83) is shown by dashed corner ticks The values of the shift between NAD 27 and NAD 83 for 7.5-minute intersections are given in USGS Bulletin 1875

Red tint indicates areas in which only landmark buildings are shown Fine red dashed lines indicate selected fence and field lines where generally visible on aerial photographs. This information is unchecked



U.S. Regional
Depository Copy
DO NOT DISCARD



ROAD CLASSIFICATION

Primary highway, hard surface	Light-duty road, hard or improved surface
Secondary highway, hard surface	Unimproved road
Interstate Route	U. S. Route
	State Route

THIS MAP COMPLIES WITH NATIONAL MAP ACCURACY STANDARDS
FOR SALE BY U. S. GEOLOGICAL SURVEY, DENVER, COLORADO 80225
OR RESTON, VIRGINIA 22092
A FOLDER DESCRIBING TOPOGRAPHIC MAPS AND SYMBOLS IS AVAILABLE ON REQUEST

Revisions shown in purple compiled in cooperation with State of Minnesota agencies from aerial photographs taken 1991 and other sources. Contours not revised. This information not field checked. Map edited 1993

Purple tint indicates extension of urban areas

ST. PAUL PARK, MINN.
44092-G8-TF-024
1967
REVISED 1993
DMA 7473 IV SW—SERIES V872

A.H. ROBINSON
MAP LIBRARY
JUN 10 1994
University of Wisconsin
Madison