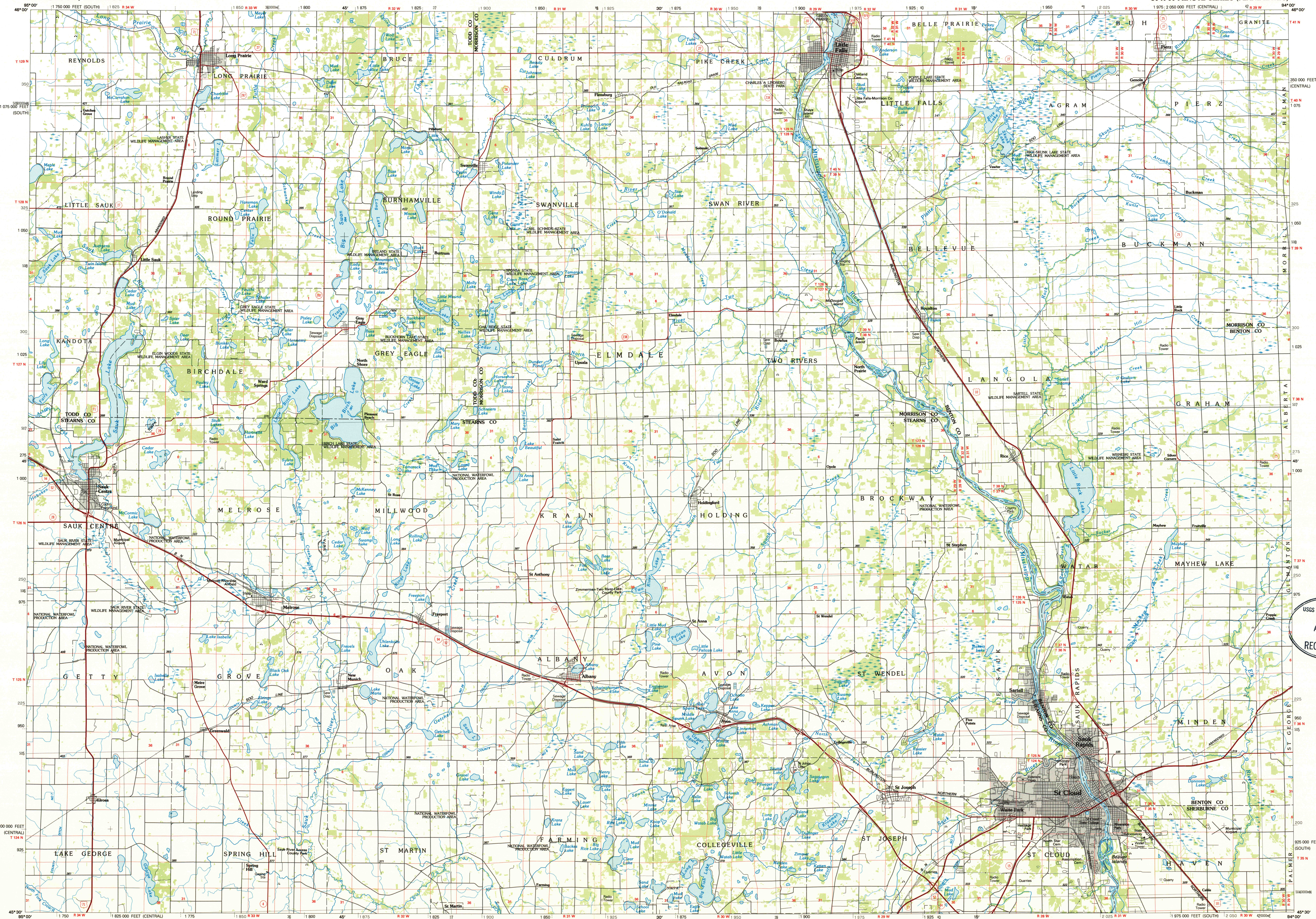


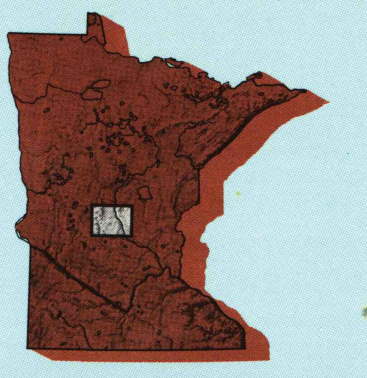
ST. CLOUD, MINNESOTA

30 X 60 MINUTE SERIES (PLANIMETRIC)



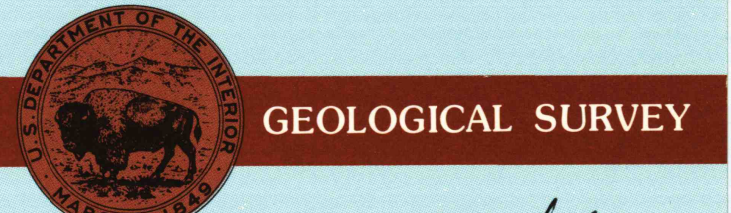
St. Cloud MINNESOTA

1:100 000-scale planimetric map



30 X 60 MINUTE QUADRANGLE SHOWING

- Elevations in meters
- Highways, roads and other manmade structures
- Water features
- Woodland areas
- Geographic names



1986/86

Produced by the United States Geological Survey
 Compiled from USGS 1:24 000-scale topographic maps dated 1945-1979. Planimetry revised from aerial photographs taken 1984 and other source data. Revised information not field checked. Map edited 1986.
 Projection and 10 000-meter grid, zone 15, Universal Transverse Mercator
 25 000-foot grid ticks based on Minnesota coordinate system, central and south zones
 1927 North American Datum
 To place on the predicted North American Datum 1983, move the projection lines 7 meters north and 20 meters east
 There may be private inholdings within the boundaries of the National or State reservations shown on this map

NATIONAL GEODETIC VERTICAL DATUM OF 1929
 ELEVATIONS SHOWN TO THE NEAREST METER

THIS MAP COMPLIES WITH NATIONAL MAP ACCURACY STANDARDS

CONVERSION TABLE		DECLINATION DIAGRAM		ADJOINING MAPS		
Meters	Feet	True	Magnetic	1	2	3
1	3.2808	111° 15'	111° 00'	1	2	3
2	6.5617	111° 00'	110° 45'	4	5	6
3	9.8425	110° 45'	110° 30'	7	8	
4	13.1234	110° 30'	110° 15'			
5	16.4042	110° 15'	110° 00'			
6	19.6850	110° 00'	109° 45'			
7	22.9659	109° 45'	109° 30'			
8	26.2467	109° 30'	109° 15'			
9	29.5275	109° 15'	109° 00'			
10	32.8084	109° 00'	108° 45'			

To convert meters to feet multiply by 3.2808
 To convert feet to meters multiply by 0.3048

UTM grid convergence (GNU) and 1983 magnetic declination (MD) at center of map
 Diagram is approximate

1 Battle Lake
 2 Brainerd
 3 Mile Lake
 4 Lake Minnesota
 5 Mora
 6 Willmar
 7 Litchfield
 8 Anoka

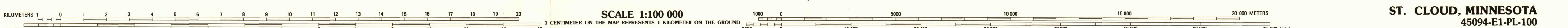
FOR SALE BY U.S. GEOLOGICAL SURVEY
 RESTON, VIRGINIA 22092

USGS NMD HISTORICAL MAP
 AUG 25 1986
 REC'D FILE COPY

Topographic Map Symbols

- Primary highway, hard surface
- Secondary highway, hard surface
- Light duty road, principal street, hard or improved surface
- Other road or street; trail
- Route marker: Interstate; U.S.; State
- Railroad: standard gage; narrow gage
- Bridge: overpass; underpass
- Tunnel: road; railroad
- Built up area; locality; elevation
- Airport; landing field; landing strip
- National boundary
- State boundary
- County boundary
- National or State reservation boundary
- Land grant boundary
- U.S. public lands survey: range, township, section
- Range, township, section line: protracted
- Power transmission line; pipeline
- Dam; dam with lock
- Cemetery; building
- Windmill; water well; spring
- Mine shaft; adit or cave; mine, quarry; gravel pit
- Campground; picnic area; U.S. location monument
- Ruins; cliff dwelling
- Distorted surface: strip mine, lava, sand
- Contours: index; intermediate; supplementary
- Bathymetric contours: index; intermediate
- Stream: lake; perennial; intermittent
- Rapids, large and small; falls, large and small
- Area to be submerged; marsh, swamp
- Land subject to controlled inundation; woodland
- Scrub; mangrove
- Orchard; vineyard

A pamphlet describing topographic maps is available on request



ST. CLOUD, MINNESOTA
 45094-EI-PL-100