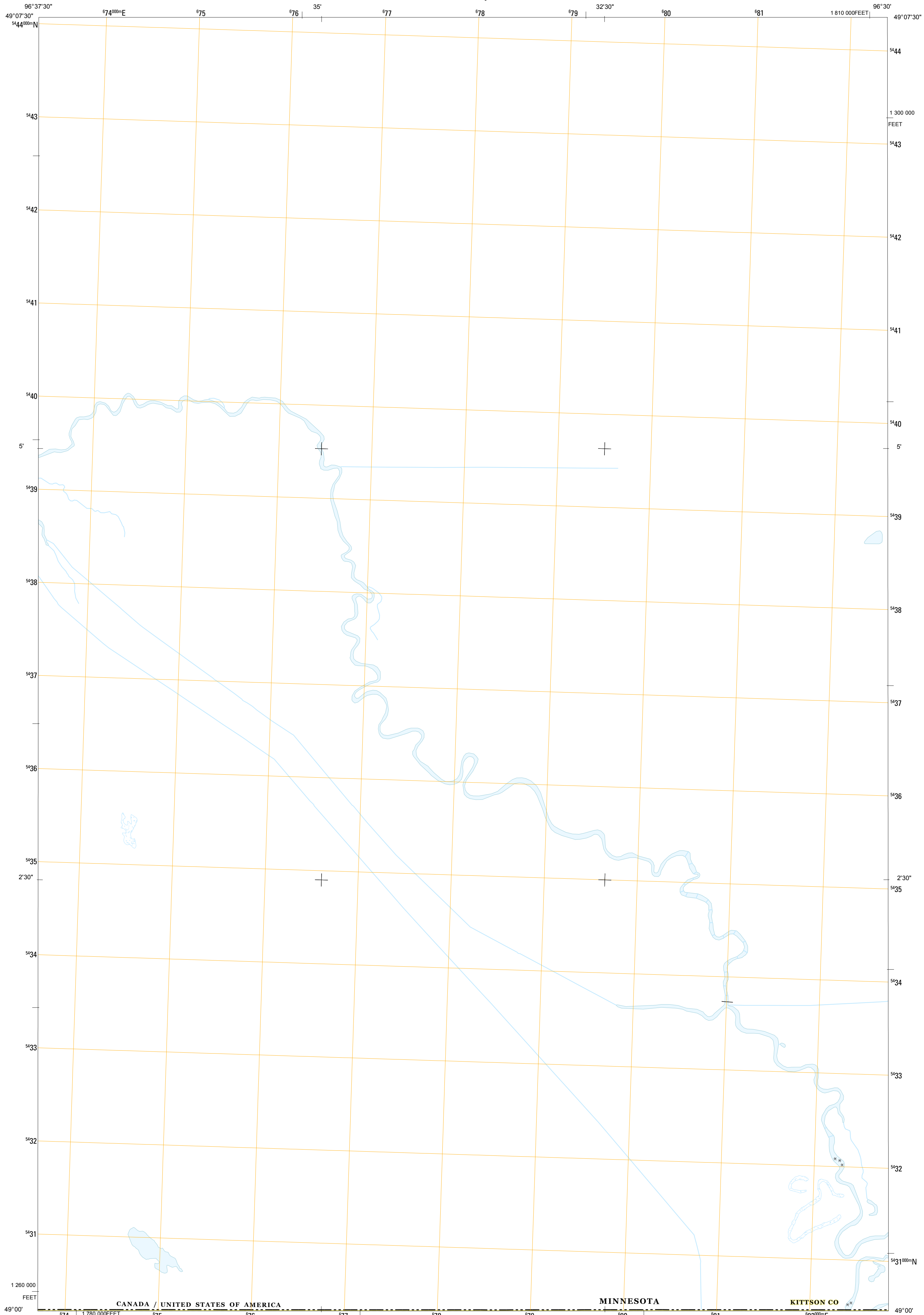




U.S. DEPARTMENT OF THE INTERIOR
U. S. GEOLOGICAL SURVEY

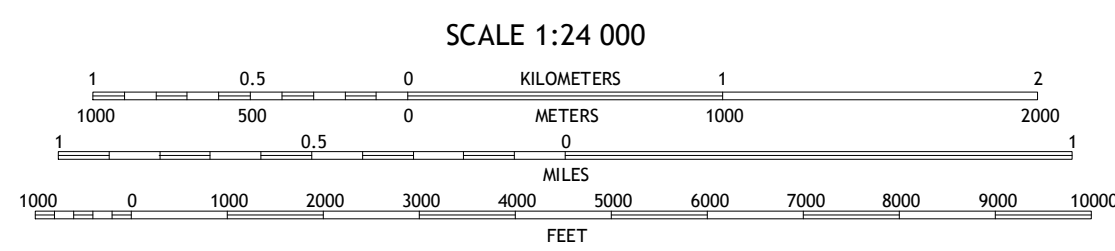
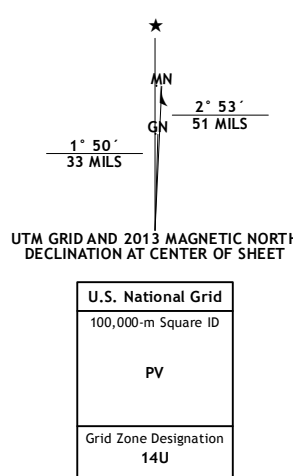


SKULL LAKE NE OE N QUADRANGLE
MINNESOTA-MANITOBA
7.5-MINUTE SERIES

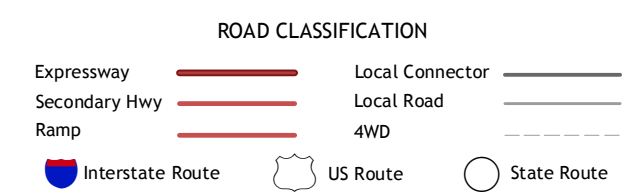


Produced by the United States Geological Survey
North American Datum of 1983 (NAD83)
World Geodetic System of 1984 (WGS84). Projection and
1 000-meter grid: Universal Transverse Mercator, Zone 14U
10 000-foot ticks:

Imagery.....Not Available
Roads.....©2006-2012 TomTom
Names.....GNIS, 2013
Hydrography.....National Hydrography Dataset, 2009
Contours.....Not Available
Boundaries.....Census, IBWC, IBC, USGS, 1972 - 2012



CONTOURS NOT PRESENT BECAUSE AVAILABLE ELEVATION
DATA DO NOT MEET ACCURACY REQUIREMENTS
This map was produced to conform with the
National Geospatial Program US Topo Product Standard, 2011.
A metadata file associated with this product is draft version 0.6.11



Skull Lake OE N	Skull Lake NE OE N	Caribou OE N
Skull Lake	Skull Lake NE	Caribou

ADJOINING 7.5 QUADRANGLES

SKULL LAKE NE OE N, MN-MB
2013