

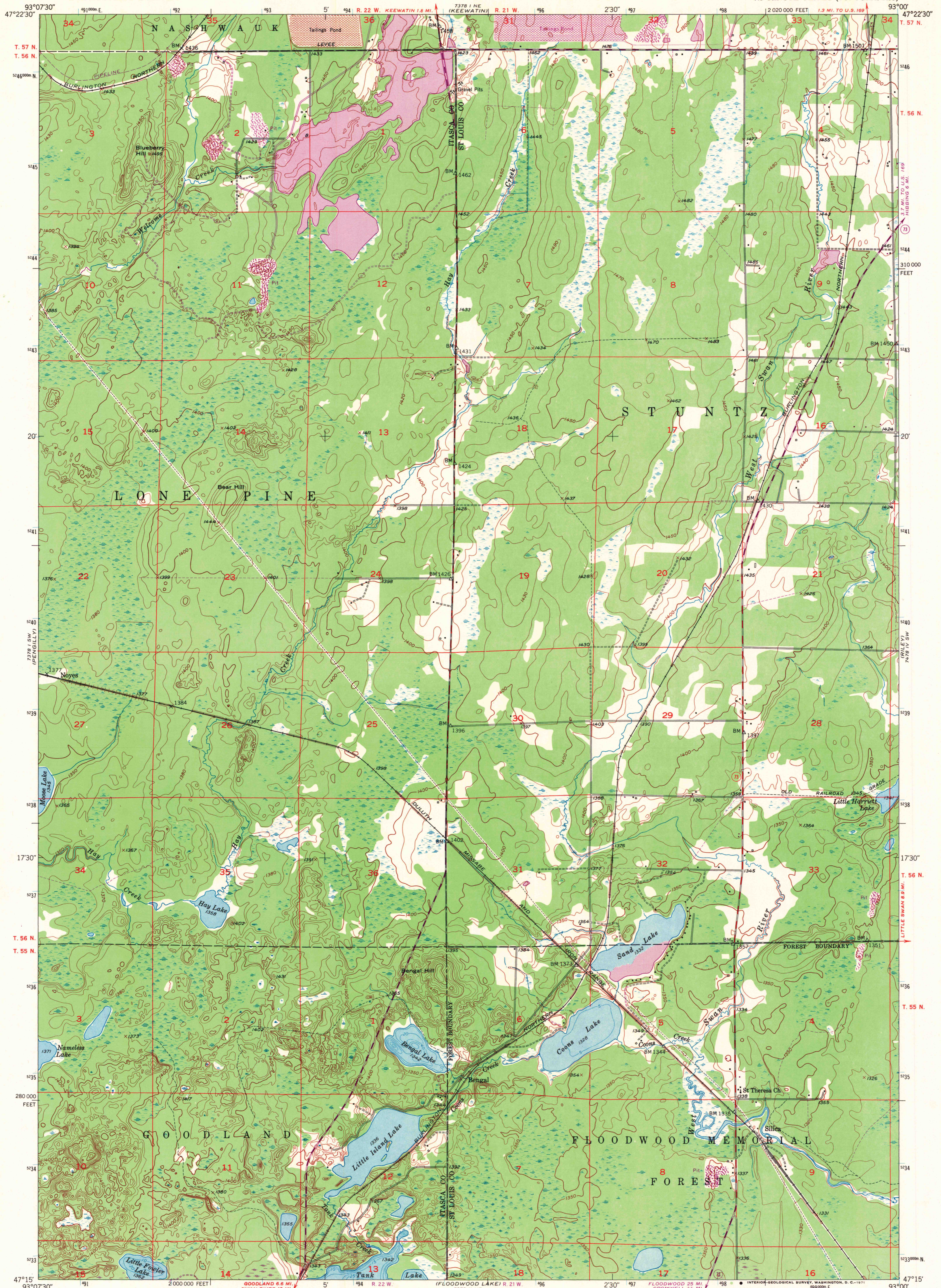
7378 1 SW
(PENGILLY)

UNITED STATES
DEPARTMENT OF THE INTERIOR
GEOLOGICAL SURVEY

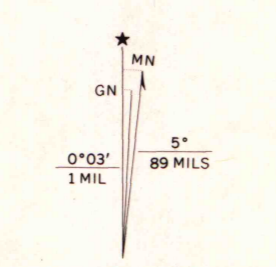
STATE OF MINNESOTA
IRON RANGE RESOURCES AND REHABILITATION COMMISSION

SILICA QUADRANGLE
MINNESOTA
7.5 MINUTE SERIES (TOPOGRAPHIC)

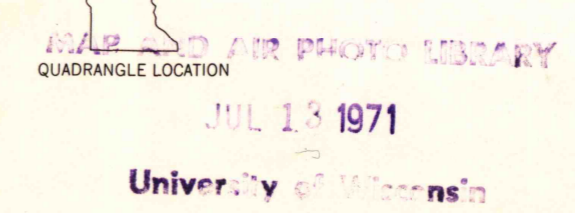
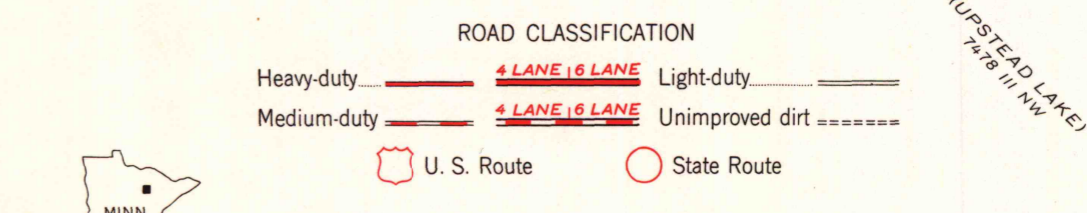
7378 1 NE
(KEEWATIN)



Mapped, edited, and published by the Geological Survey
Control by USGS and USC&GS
Topography from aerial photographs by Kesh plotter
Aerial photographs taken 1947. Field check 1952
Depth curves compiled from charts furnished
by Minnesota Department of Conservation
Polyconic projection. 1927 North American datum
10,000-foot grid based on Minnesota coordinate system, north zone
1000-meter Universal Transverse Mercator grid ticks,
zone 15, shown in blue
Revisions shown in purple compiled from aerial photographs
taken 1969. This information not field checked



SCALE 1:24,000
CONTOUR INTERVAL 10 FEET
DATUM IS MEAN SEA LEVEL



SILICA, MINN.
N4715-W9300/7.5
1952
PHOTOREVISED 1969
AMS 7378 1 SE-SERIES V872

THIS MAP COMPLIES WITH NATIONAL MAP ACCURACY STANDARDS
FOR SALE BY U.S. GEOLOGICAL SURVEY, DENVER, COLORADO 80225, OR WASHINGTON, D.C. 20242
A FOLDER DESCRIBING TOPOGRAPHIC MAPS AND SYMBOLS IS AVAILABLE ON REQUEST