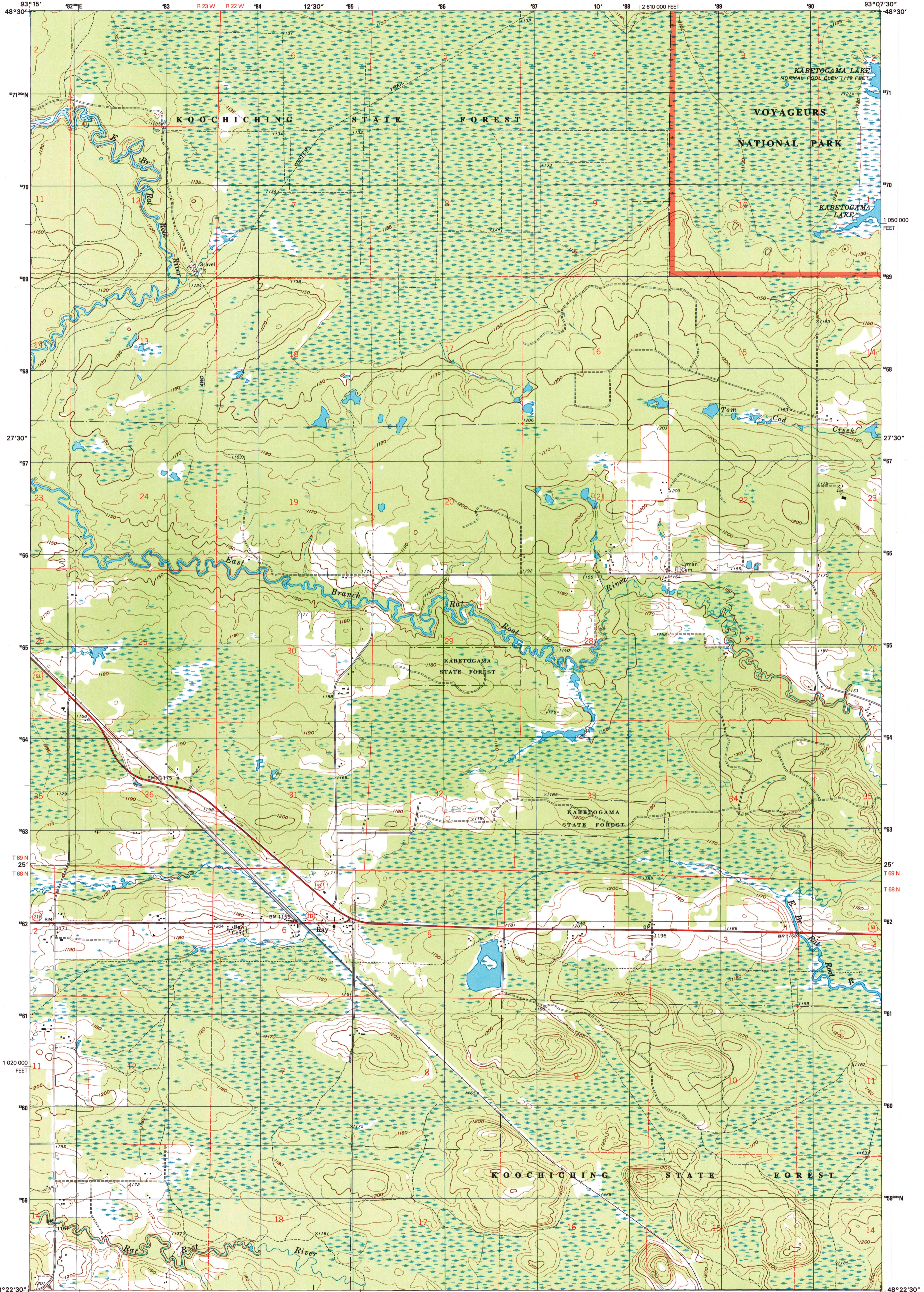


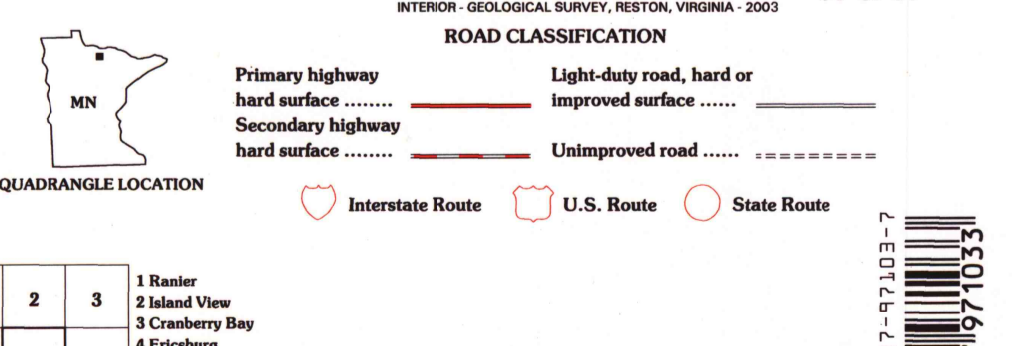
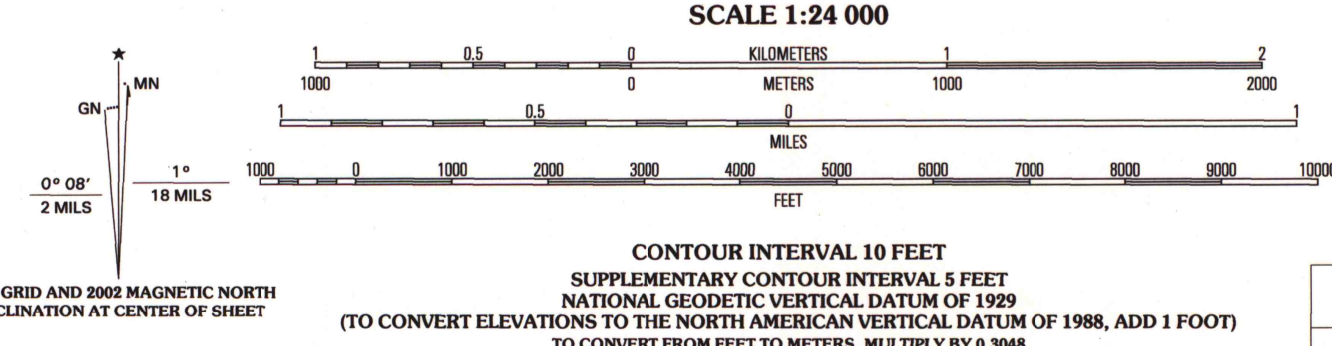


U.S. DEPARTMENT OF THE INTERIOR
U.S. GEOLOGICAL SURVEY

RAY QUADRANGLE
MINNESOTA-KOOCHICHING CO.
7.5-MINUTE SERIES (TOPOGRAPHIC)



Produced by the United States Geological Survey
Topography compiled 1968. Planimetry derived from imagery taken 1999 and other sources. Public Land Survey System and survey control current as of 1969. Boundaries current as of 2002 North American Datum of 1983 (NAD 83). Projection and 1000-meter grid: Universal Transverse Mercator, zone 15 10 000-foot ticks: Minnesota Coordinate System of 1983 (north zone)
North American Datum of 1927 (NAD 27) is shown by dashed corner ticks. The values of the shift between NAD 83 and NAD 27 for 7.5-minute intersections are obtainable from National Geodetic Survey NADCON software
There may be private inholdings within the boundaries of the National or State reservations shown on this map
Houses of worship, schools, and other labeled buildings verified 1969



CONTOUR INTERVAL 10 FEET
SUPPLEMENTARY CONTOUR INTERVAL 5 FEET
NATIONAL GEODEIC VERTICAL DATUM OF 1929
(TO CONVERT ELEVATIONS TO THE NORTH AMERICAN VERTICAL DATUM OF 1988, ADD 1 FOOT)
TO CONVERT FROM FEET TO METERS, MULTIPLY BY 0.3048

ADJOINING 7.5' QUADRANGLES

1	2	3	1 Raoler
2	3	4	2 Island View
3	4	5	3 Cranberry Bay
4	5	6	4 Ericaberg
5	6	7	5 Kabetogama
6	7	8	6 Ericaberg SE
			7 Ray SW
			8 Ray SE

A.H. ROBINSON
MAP LIBRARY
SEP 3 2003
University of Wisconsin
Madison

U.S. Regional
Depository Copy
DO NOT DISCARD



THIS MAP COMPLIES WITH NATIONAL MAP ACCURACY STANDARDS
FOR SALE BY U.S. GEOLOGICAL SURVEY, P.O. BOX 25286, DENVER, COLORADO 80225
A FOLDER DESCRIBING TOPOGRAPHIC MAPS AND SYMBOLS IS AVAILABLE ON REQUEST

RAY, MN
1999
NIMA 7380 1 NW-SERIES V872

