

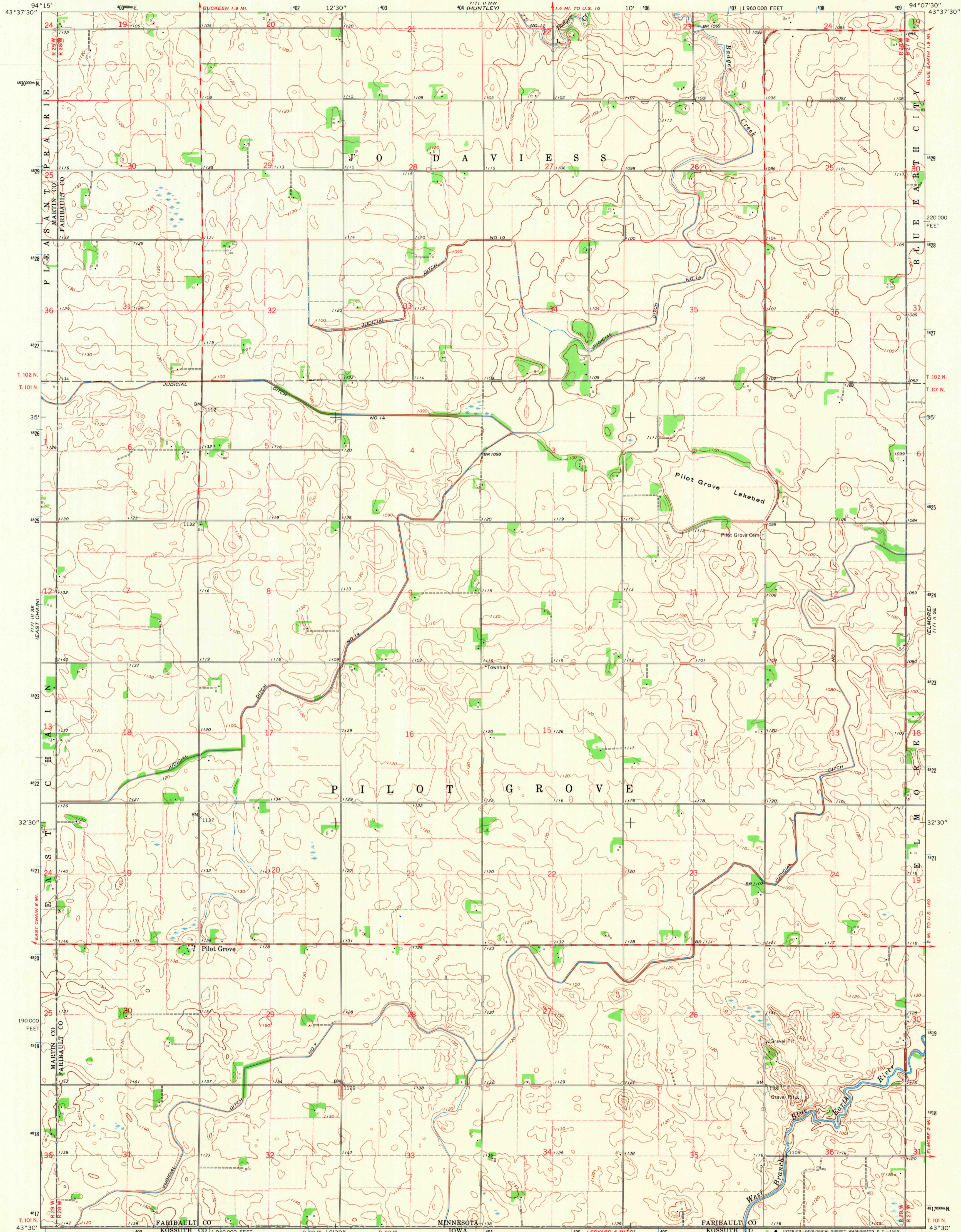
211 W 1/4 (66-AND-6)

UNITED STATES
DEPARTMENT OF THE INTERIOR
GEOLOGICAL SURVEY

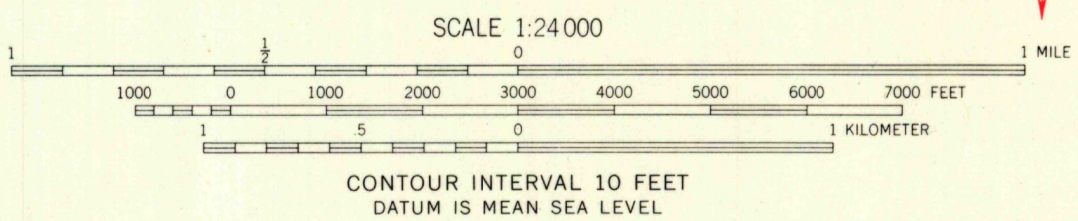
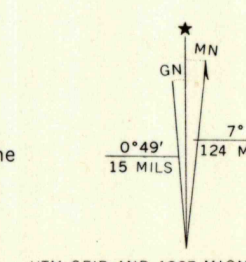
STATE OF MINNESOTA
DEPARTMENT OF ADMINISTRATION

PILOT GROVE QUADRANGLE
MINNESOTA-IOWA
7.5 MINUTE SERIES (TOPOGRAPHIC)

717 II SW (BLUE EARTH)



Mapped, edited, and published by the Geological Survey
Control by USGS and USC&GS
Topography by photogrammetric methods from aerial photographs taken 1965. Field checked 1967
Polyconic projection. 1927 North American datum
10,000-foot grid based on Minnesota coordinate system, south zone
1000-meter Universal Transverse Mercator grid ticks, zone 15, shown in blue
Fine red dashed lines indicate selected fence and field lines where generally visible on aerial photographs
This information is unchecked



USGS
Historical File
Topographic Division

ROAD CLASSIFICATION
Medium-duty — Light-duty
Unimproved dirt —



THIS MAP COMPLIES WITH NATIONAL MAP ACCURACY STANDARDS
FOR SALE BY U.S. GEOLOGICAL SURVEY, DENVER, COLORADO 80225 OR WASHINGTON, D.C. 20242
AND BY THE IOWA GEOLOGICAL SURVEY, IOWA CITY, IOWA 52240
A FOLDER DESCRIBING TOPOGRAPHIC MAPS AND SYMBOLS IS AVAILABLE ON REQUEST

PILOT GROVE, MINN.—IOWA
N4330—W9407.5/7.5

1967
AMS 7171 II SW—SERIES V872

U.S.G.S.
FILE COPY
TOPOGRAPHIC DIVISION

3760
SEP 3 1969