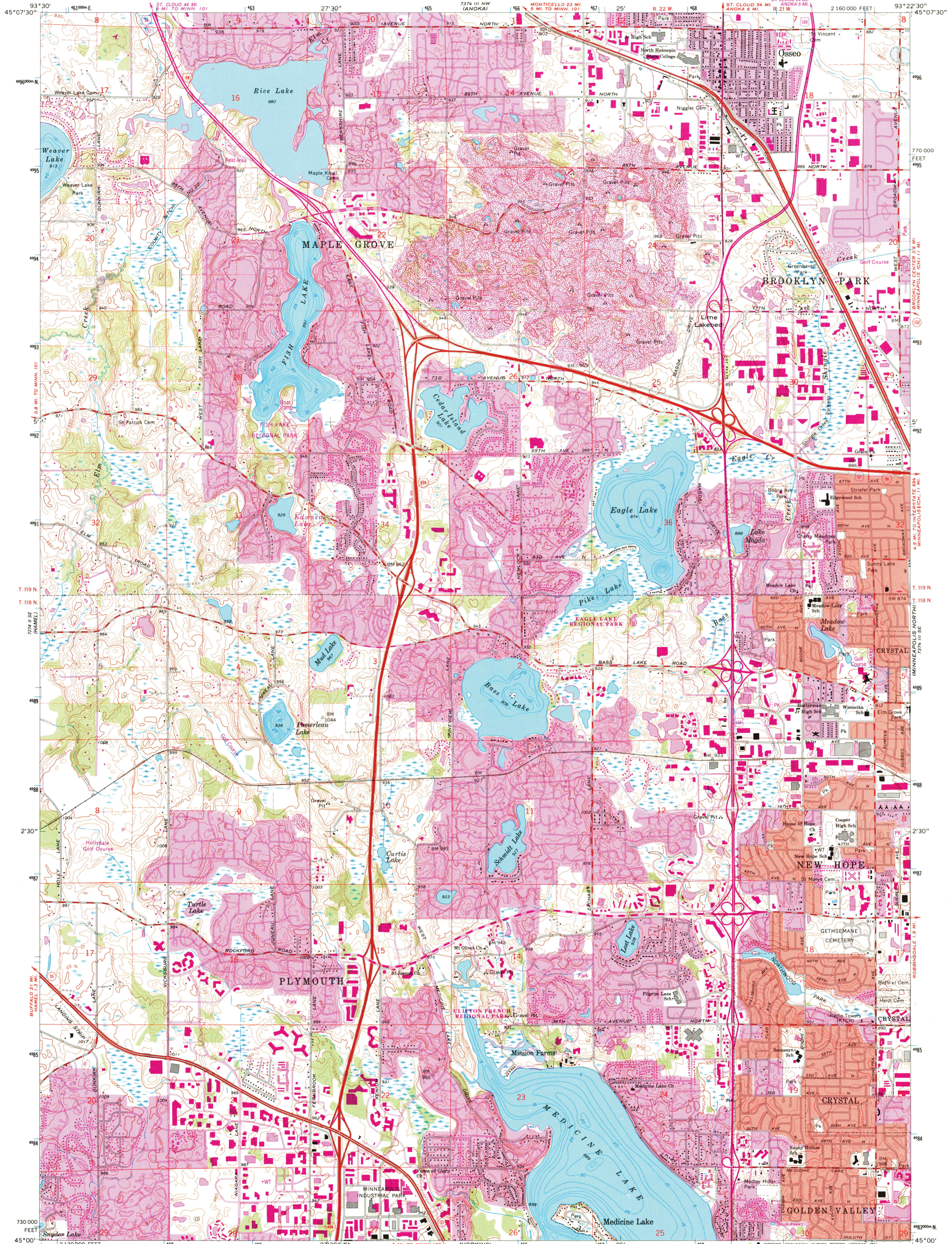
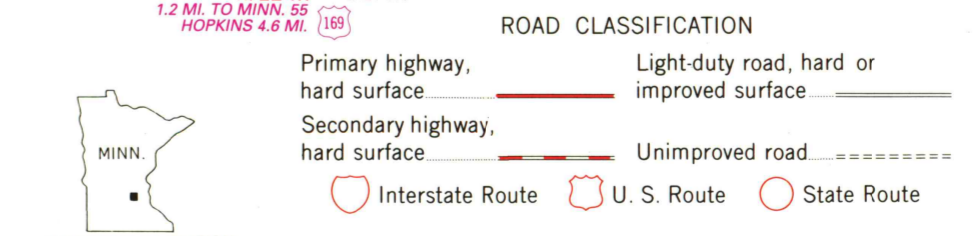
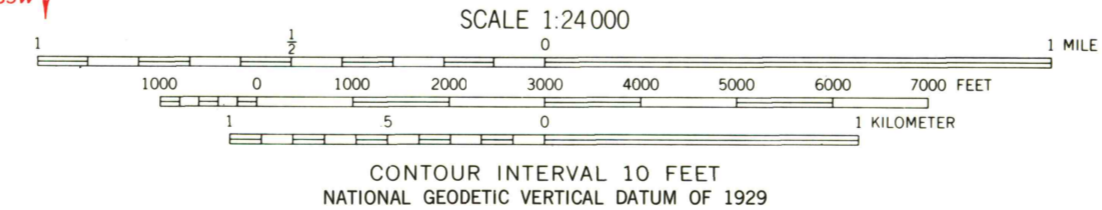
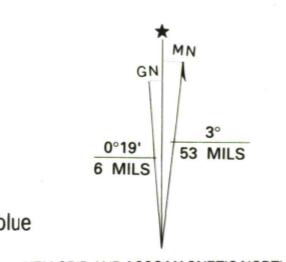


UNITED STATES
DEPARTMENT OF THE INTERIOR
GEOLOGICAL SURVEY

OSSEO QUADRANGLE
MINNESOTA - HENNEPIN CO.
7.5 MINUTE SERIES (TOPOGRAPHIC)



Produced by the United States Geological Survey
Control by USGS and NOAA
Topography by photogrammetric methods from aerial photographs taken 1947. Field checked 1955. Revised from aerial photographs taken 1966. Field checked 1967
Hydrography compiled from information furnished by Minnesota Department of Conservation
Projection and 10,000-foot grid ticks: Minnesota coordinate system, south zone (Lambert conformal conic)
1000-meter Universal Transverse Mercator grid ticks, zone 15, shown in blue
1927 North American Datum (NAD 27)
North American Datum of 1983 (NAD 83) is shown by dashed corner ticks
The values of the shift between NAD 27 and NAD 83 for 7.5-minute intersections are given in USGS Bulletin 1875
Red tint indicates areas in which only landmark buildings are shown
Fine red dashed lines indicate selected fence and field lines where generally visible on aerial photographs. This information is unchecked



COMPLIES WITH U.S. GEOLOGICAL SURVEY STANDARDS FOR SPATIAL ACCURACY—CLASS 2
FOR SALE BY U.S. GEOLOGICAL SURVEY
DENVER, COLORADO 80225, OR RESTON, VIRGINIA 22092
A FOLDER DESCRIBING TOPOGRAPHIC MAPS AND SYMBOLS IS AVAILABLE ON REQUEST

Revisions shown in purple compiled in cooperation with State of Minnesota agencies from aerial photographs taken 1991-92 and other sources. This information not field checked. Map edited 1993
Information shown in purple may not meet USGS content standards and may conflict with previously mapped contours
Purple tint indicates extension of urban areas

OSSEO, MINN.
45093-A4-TF-024
1967
REVISED 1993
DMA 7374 III SW-SERIES V872

