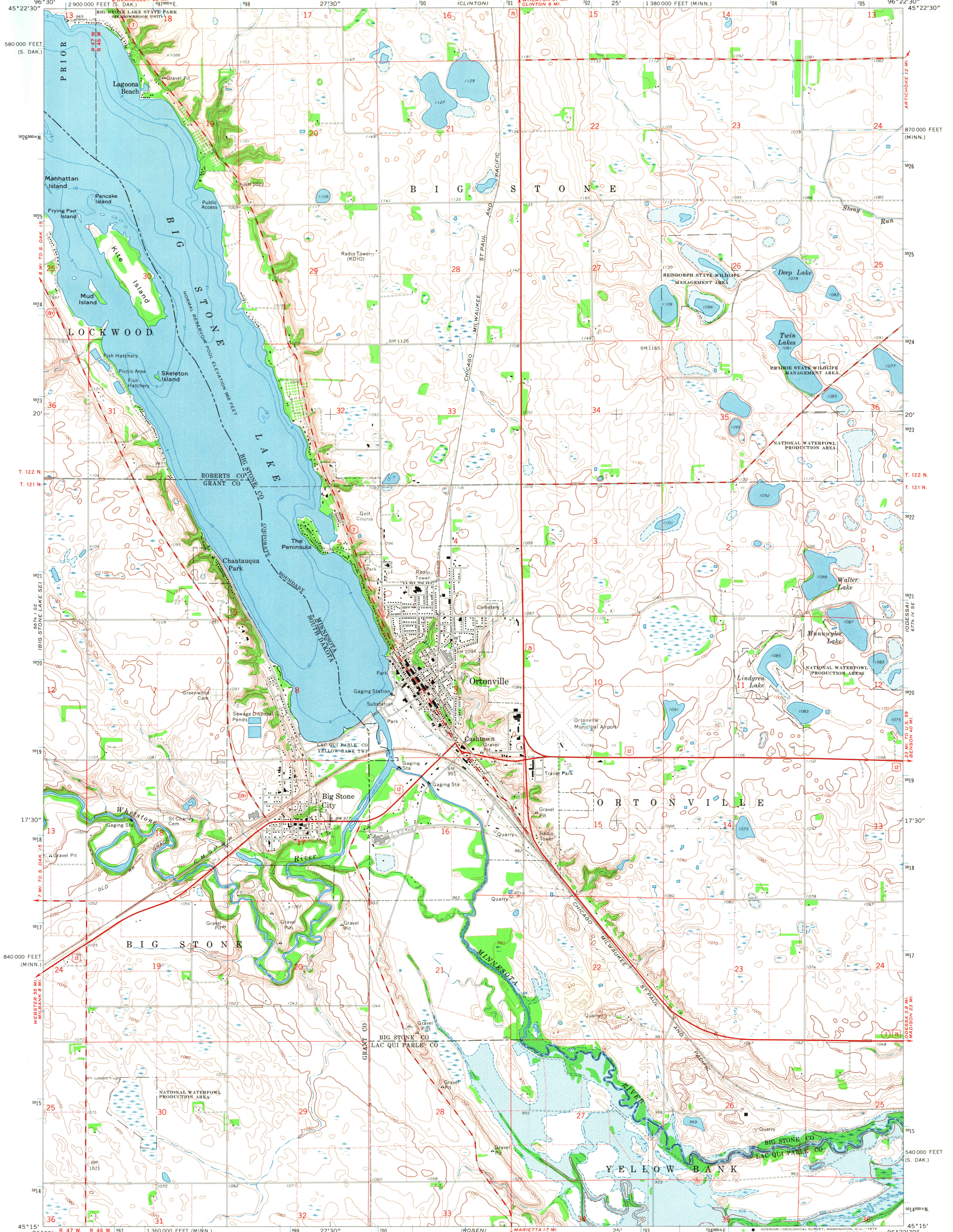
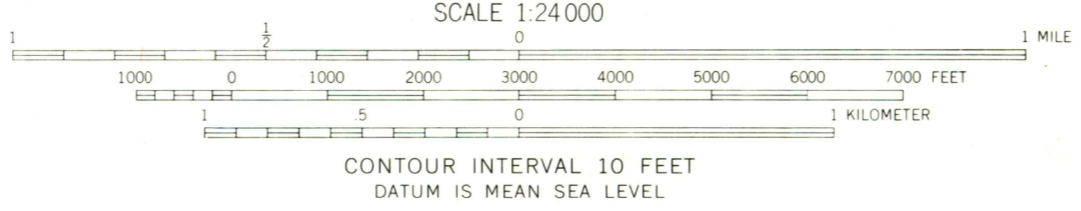
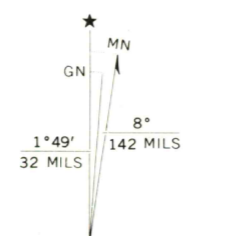


UNITED STATES
DEPARTMENT OF THE INTERIOR
GEOLOGICAL SURVEY

ORTONVILLE QUADRANGLE
MINNESOTA—SOUTH DAKOTA
7.5 MINUTE SERIES (TOPOGRAPHIC)
SW/4 ORTONVILLE 15' QUADRANGLE



Maped, edited, and published by the Geological Survey
Control by USGS, USC&GS and Minnesota Highway Department
Topography by photogrammetric methods from aerial
photographs taken 1971. Field checked 1971
Hydrography compiled from information furnished by
Minnesota Department of Conservation
Projection: Minnesota coordinate system, south zone
(Lambert conformal conic)
10,000-foot grid ticks based on Minnesota coordinate
system, south zone, and South Dakota coordinate system, north zone
1000-meter Universal Transverse Mercator grid ticks,
zone 14, shown in blue. 1927 North American datum
Blue hatching indicates area to be submerged by Highway 75 Dam
Areas covered by dashed light-blue pattern
are subject to controlled inundation
Fine red dashed lines indicate selected fence and field lines where
generally visible on aerial photographs. This information is unchecked



ROAD CLASSIFICATION
Primary highway, hard surface
Secondary highway, hard surface
Unimproved road
Light-duty road, hard or improved surface
Interstate Route
U. S. Route
State Route

ORTONVILLE, MINN.—S. DAK.
SW/4 ORTONVILLE 15' QUADRANGLE
N4515—W9622.5/7.5

MAR 22 1974

1971

AMS 6774 IV SW—SERIES V872

USGS
Historical File
Topographic Division

2720