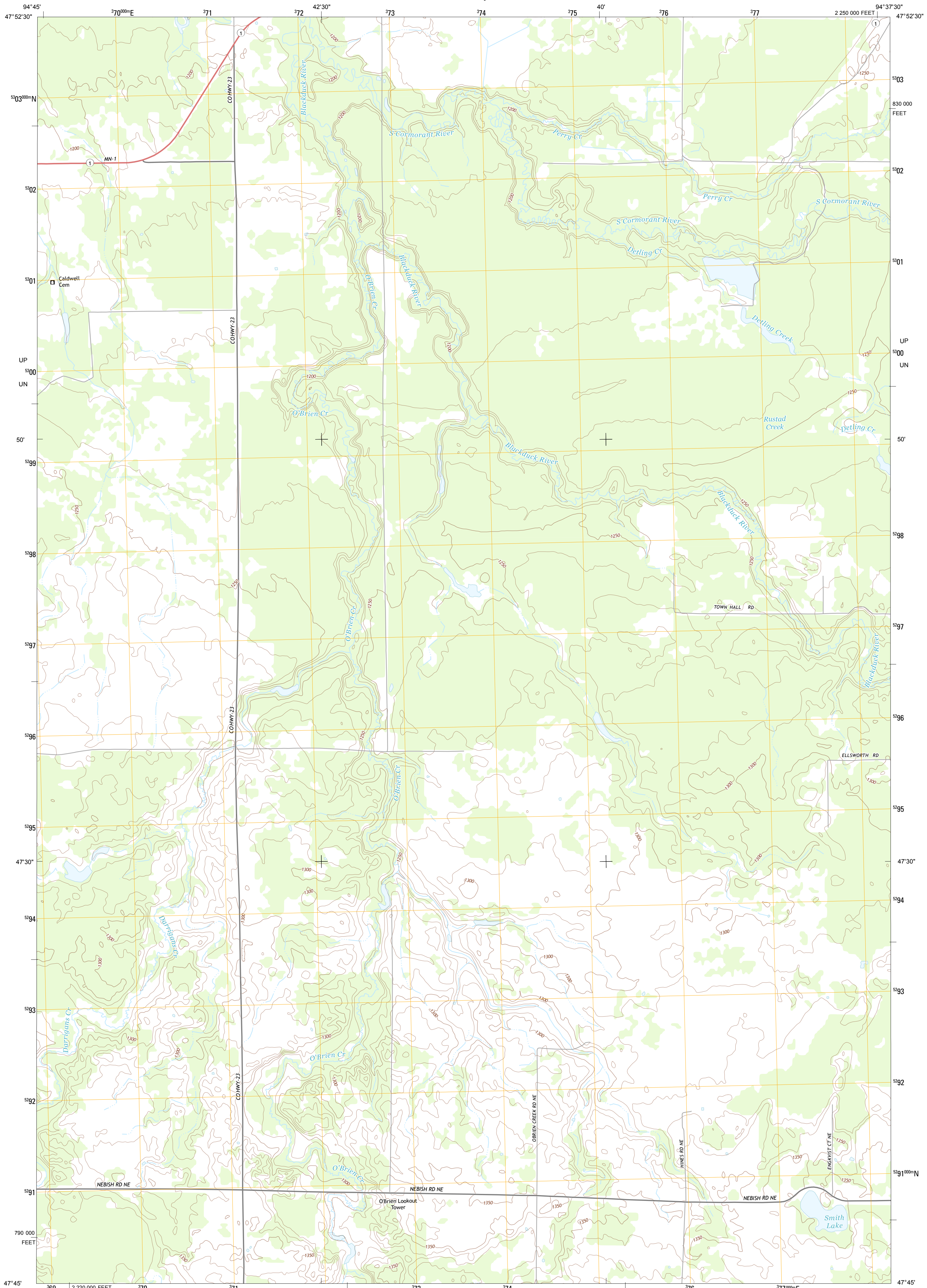




U.S. DEPARTMENT OF THE INTERIOR
U. S. GEOLOGICAL SURVEY



O'BRIEN LOOKOUT TOWER QUADRANGLE
MINNESOTA-BELTRAMI CO.
7.5-MINUTE SERIES



Produced by the United States Geological Survey
North American Datum of 1983 (NAD83)
World Geodetic System of 1984 (WGS84). Projection and
1 000-meter grid: Universal Transverse Mercator, Zone 15T
10 000-foot ticks: Minnesota Coordinate System of 1983 (north
zone)

Imagery.....NAIP, June 2010 - July 2010
Roads.....©2006-2012 TomTom
Names.....GNIS, 2013
Hydrography.....National Hydrography Dataset, 2010
Contours.....National Elevation Dataset, 2012
Boundaries.....Census, IBWC, IBC, USGS, 1972 - 2012

UTM GRID AND 2013 MAGNETIC NORTH
DECLINATION AT CENTER OF SHEET

U.S. National Grid	100,000 m Square ID
UP	UN
Grid Zone Designation	15T



ROAD CLASSIFICATION

Expressway	Local Connector
Secondary Hwy	Local Road
Ramp	4WD
Interstate Route	US Route
	State Route

QUADRANGLE LOCATION

Redby NE	Saun	Saun NE
Nebish	O'Brien Lookout Tower	Bardon Lake
White Fish Lake	Tenstrike	Blackduck

O'BRIEN LOOKOUT TOWER, MN
2013

ADJOINING 7.5 QUADRANGLES