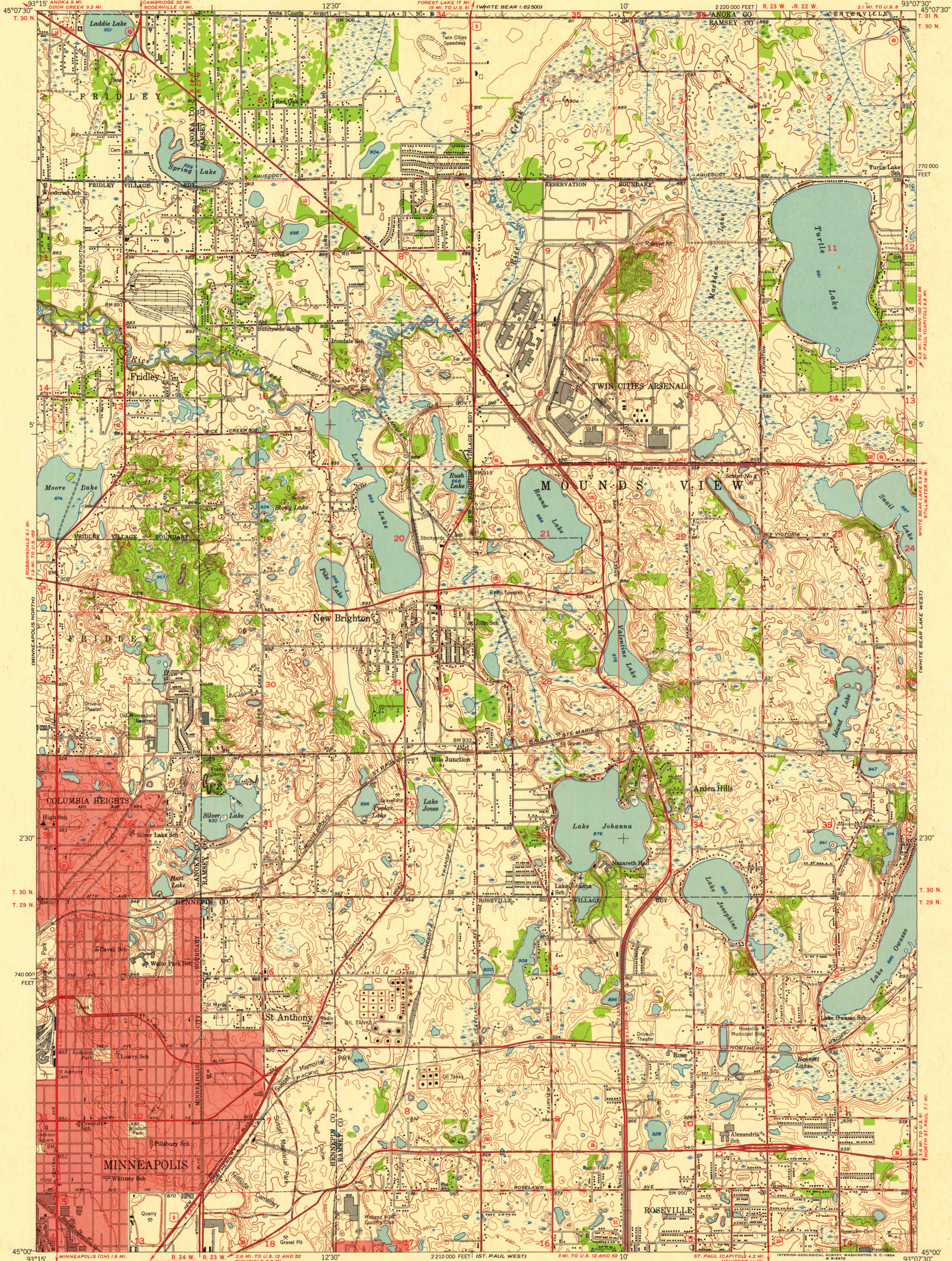


UNITED STATES
DEPARTMENT OF THE INTERIOR
GEOLOGICAL SURVEY

NEW BRIGHTON QUADRANGLE
MINNESOTA
7.5 MINUTE SERIES (TOPOGRAPHIC)
SW/4 WHITE BEAR 15' QUADRANGLE



FILE COPY

FILE COPY

Mapped, edited, and published by the Geological Survey
Control by USGS, USC&GS, and USCE
Topography from aerial photographs by Kelsch plotter
Aerial photographs taken 1947. Field check 1952
Polyconic projection. 1927 North American datum
10,000-foot grid based on Minnesota coordinate system,
south zone
Red tint indicates areas in which only
landmark buildings are shown

SCALE 1:24000
CONTOUR INTERVAL 10 FEET
DATUM IS MEAN SEA LEVEL

USGS
Historical File
Topographic Division

ROAD CLASSIFICATION
Heavy-duty 4 LANE 16 LANE Light-duty
Medium-duty 4 LANE 16 LANE Unimproved dirt
U. S. Route State Route

NEW BRIGHTON, MINN.
SW/4 WHITE BEAR 15' QUADRANGLE
N4500-W9307.5/7.5

1952

FOR SALE BY U. S. GEOLOGICAL SURVEY, FEDERAL CENTER, DENVER, COLORADO OR WASHINGTON 25, D. C.
A FOLDER DESCRIBING TOPOGRAPHIC MAPS AND SYMBOLS IS AVAILABLE ON REQUEST

APPROXIMATE MEAN DECLINATION, 1952

TRUE NORTH
MAGNETIC NORTH

QUADRANGLE LOCATION