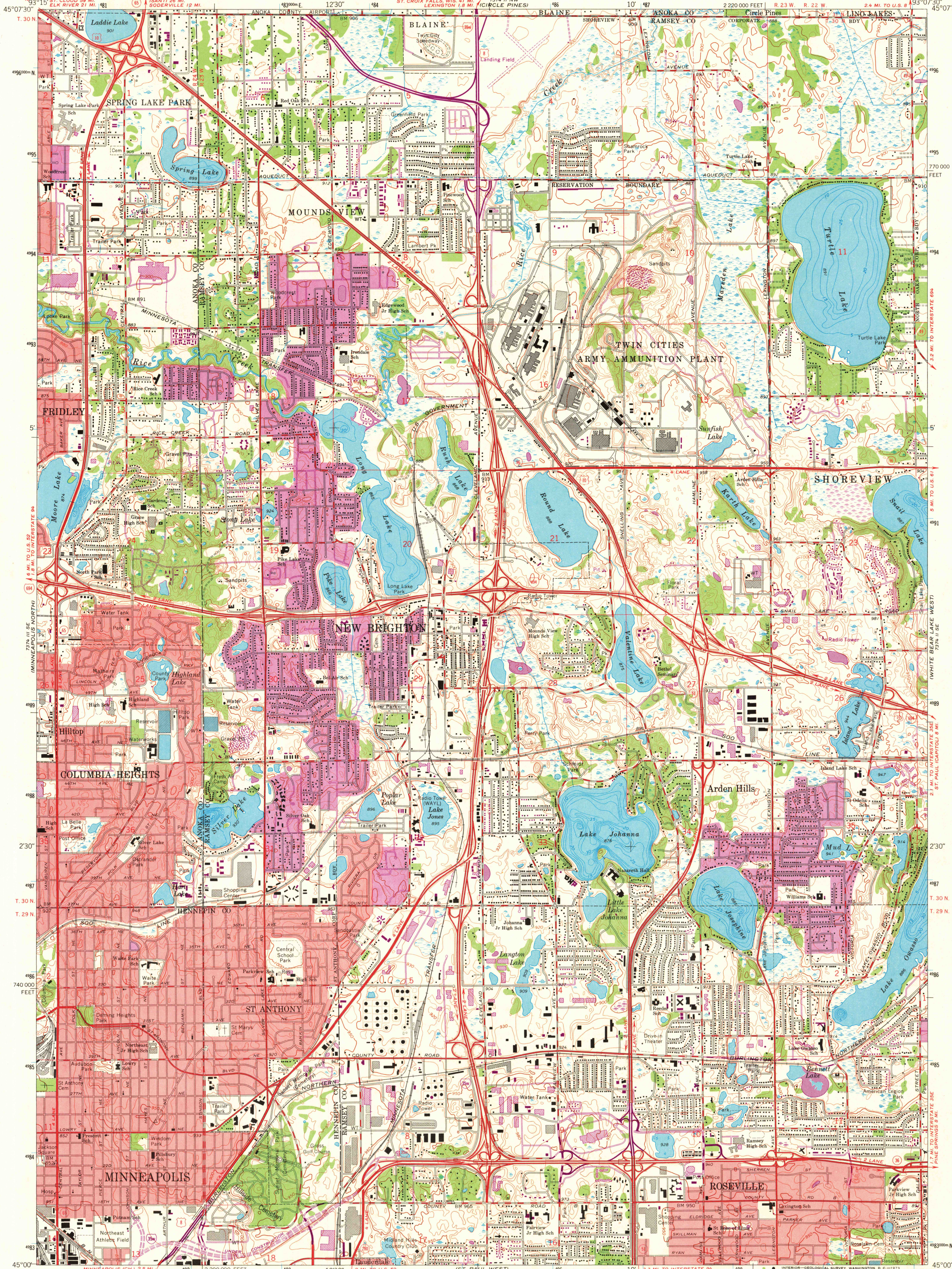


UNITED STATES
DEPARTMENT OF THE INTERIOR
GEOLOGICAL SURVEY

NEW BRIGHTON QUADRANGLE
MINNESOTA
7.5 MINUTE SERIES (TOPOGRAPHIC)
SW/4 NEW BRIGHTON 15' QUADRANGLE

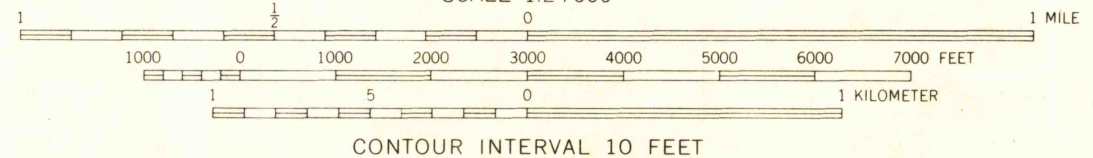


Mapped, edited, and published by the Geological Survey

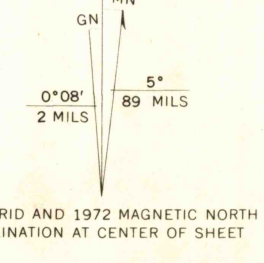
Control by USGS, USC&GS
Topography by photogrammetric methods from aerial photographs taken 1947. Field checked 1952. Revised from aerial photographs taken 1966. Field checked 1967

Hydrography compiled from information furnished by Minnesota Department of Conservation
Polyconic projection. 1927 North American datum, 10,000-foot grid based on Minnesota coordinate system, south zone 1000-meter Universal Transverse Mercator grid ticks, zone 15, shown in blue

Red tint indicates areas in which only landmark buildings are shown
Fine red dashed lines indicate selected fence and field lines where generally visible on aerial photographs. This information is unchecked



CONTOUR INTERVAL 10 FEET
DATUM IS MEAN SEA LEVEL



THIS MAP COMPLIES WITH NATIONAL MAP ACCURACY STANDARDS
FOR SALE BY U.S. GEOLOGICAL SURVEY, DENVER, COLORADO 80225, OR WASHINGTON, D. C. 20242
A FOLDER DESCRIBING TOPOGRAPHIC MAPS AND SYMBOLS IS AVAILABLE ON REQUEST

Revisions shown in purple compiled from aerial photographs taken 1972. This information not field checked
Purple tint indicates extension of urban areas

ROAD CLASSIFICATION

Heavy-duty	Light-duty
Medium-duty	Unimproved dirt
Interstate Route	U. S. Route
	State Route



NEW BRIGHTON, MINN.
SW/4 NEW BRIGHTON 15' QUADRANGLE
N4500—W9307.5/7.5

1967
PHOTOREVISED 1972
AMS 7374 II SW—SERIES V872

USGS
Historic—1 File
Topographic Division

JUN 21 1973

4365