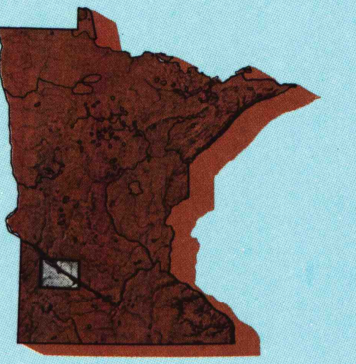


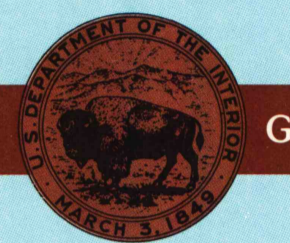
Montevideo MINNESOTA

1:100 000-scale planimetric map



30 X 60 MINUTE QUADRANGLE SHOWING

- Elevations in meters
- Highways, roads and other manmade structures
- Water features
- Woodland areas
- Geographic names



GEOLOGICAL SURVEY

1986

Produced by the United States Geological Survey
 Compiled from USGS 1:24 000-scale topographic maps dated 1962-1983. Planimetry revised from aerial photographs taken 1984 and other source data. Map edited 1986
 Field checked. Map edited 1986
 Projection and 10 000-meter grid, zone 15, Universal Transverse Mercator
 25 000-foot grid ticks based on Minnesota coordinate system, south zone
 1927 North American Datum
 To place on the predicted North American Datum 1983, move the projection lines 7 meters north and 23 meters east
 There may be private inholdings within the boundaries of the National or State reservations shown on this map

NATIONAL GEODETIC VERTICAL DATUM OF 1929
 ELEVATIONS SHOWN TO THE NEAREST METER

THIS MAP COMPLIES WITH NATIONAL MAP ACCURACY STANDARDS

CONVERSION TABLE		DECLINATION DIAGRAM		ADJOINING MAPS	
Meters	Feet			1	2
1	3.2808			3	4
2	6.5616			4	5
3	9.8424			5	6
4	13.1232			6	7
5	16.4040			7	8
6	19.6848			8	
7	22.9656				
8	26.2464				
9	29.5272				
10	32.8080				

To convert meters to feet multiply by 3.2808
 To convert feet to meters multiply by 0.3048
 UTM grid convergence (GN) and 1983 magnetic declination (MN) at center of map diagram is approximate

FOR SALE BY U.S. GEOLOGICAL SURVEY
 RESTON, VIRGINIA 22092

U.S. Regional
 Depository Copy
 DO NOT DISCARD

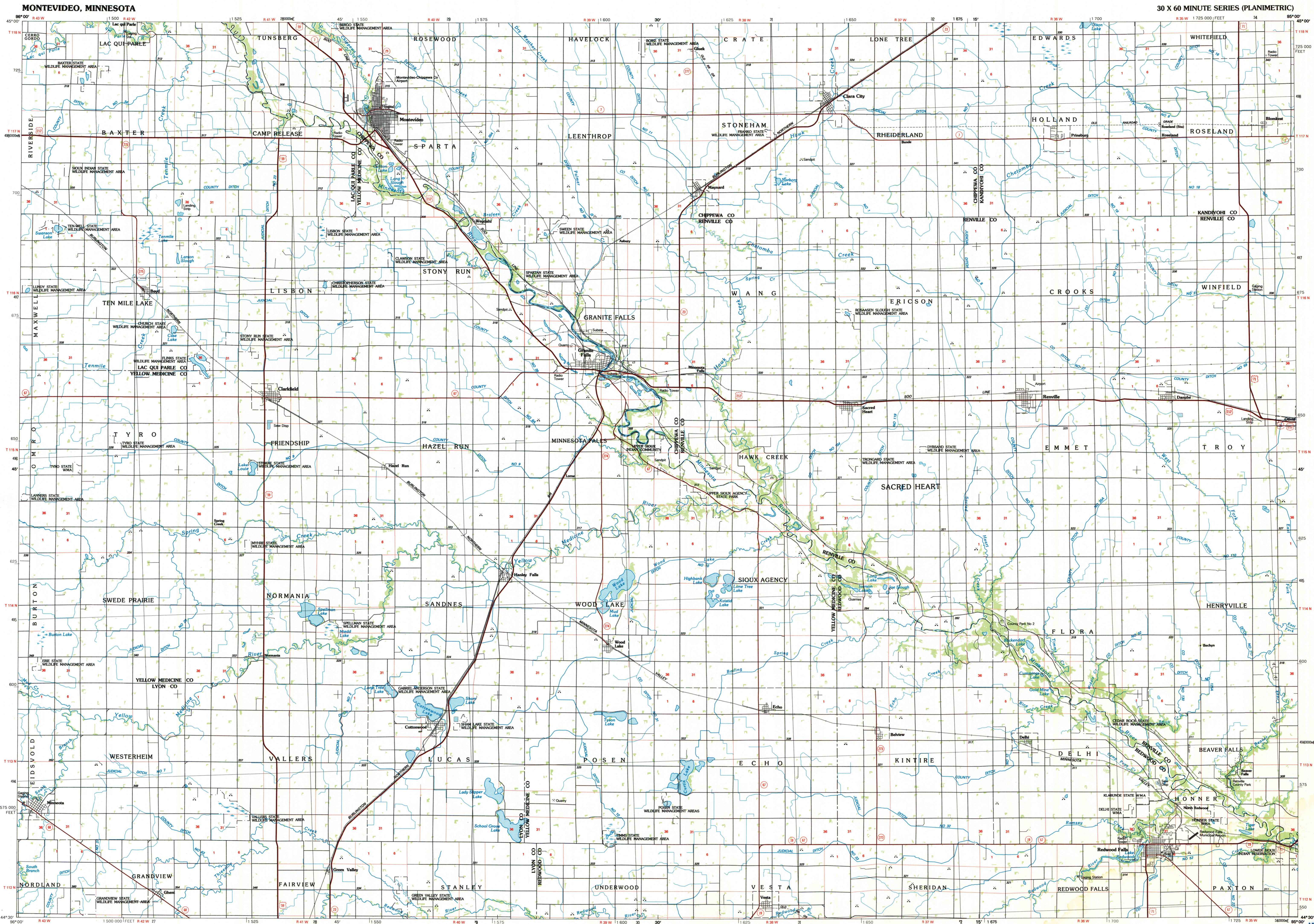
Topographic Map Symbols

- Primary highway, hard surface
- Secondary highway, hard surface
- Light duty road, principal street, hard or improved surface
- Other road or street; trail
- Route marker: interstate; U.S.; State
- Railroad: standard gauge; narrow gauge
- Bridge: overpass; underpass
- Tunnel: road; railroad
- Built up area; locality; elevation
- Airport; landing field; landing strip
- National boundary
- State boundary
- County boundary
- National or State reservation boundary
- Land grant boundary
- U.S. public lands survey: range, township; section
- Range, township; section line: protracted
- Power transmission line; pipeline
- Dam; dam with lock
- Cemetery; building
- Windmill; water well; spring
- Mine shaft; adit or cave; mine, quarry; gravel pit
- Campground; picnic area; U.S. location monument
- Ruins; cliff dwelling
- Distorted surface: strip mine; levee; sand
- Contours: index; intermediate; supplementary
- Bathymetric contours: index; intermediate
- Stream, lake; perennial; intermittent
- Rapids, large and small; falls, large and small
- Area to be submerged; marsh, swamp
- Land subject to covered inundation; woodland
- Scrub; mangrove
- Orchard; vineyard

A pamphlet describing topographic maps is available on request
 ARTHUR H. ROBINSON MAP LIBRARY
 University of Wisconsin-Madison

1986

OCT 2 1986 BCC 9/8



MONTEVIDEO, MINNESOTA 44095-E1-PL-100
 SCALE 1:100 000
 1 CENTIMETER ON THE MAP REPRESENTS 1 KILOMETER ON THE GROUND
 1:100 000
 10000 0 5000 10000 20000 30000 40000 50000 60000 70000 FEET
 KILOMETERS 1 0 1 2 3 4 5 6 7 8 9 10 11 12 13 14 15 16 17 18 19 20

• INTERIOR-GEOLOGICAL SURVEY, RESTON, VIRGINIA-1986